

## DAFTAR PUSTAKA

- Assiam, N., Setyawati, I., Sudirga, S.K., 2014. Pengaruh Dosis Dan Lama Perlakuan Ekstrak Daun Kaliandra Merah (*Calliandra calothyrsus* Meissn.) Terhadap Struktur Histologi Ginjal Mencit (*Mus musculus* L.). *J. SIMBIOSIS II* 236–246.
- Bao, Y.W., Yuan, Y., Chen, J.H., Lin, W.Q., 2018. Kidney disease models: tools to identify mechanisms and potential therapeutic targets. *Zool. Res.* 39, 72–86.
- Bertram G, K., 2006. *Basic and Clinical Pharmacology, Tenth. ed.* McGraw-Hill, San Francisco.
- Broe, M.E. De, Porter, G.A., 2008. *Clinical Nephrotoxins, Third. ed.* Springer Science+Business Media, LLC, USA.
- Brunton, L.L., 2011. *Goodman & Gilman's: The Pharmacological Basis of Therapeutics, Twelfth. ed.* McGraw-Hill Companies, Inc, United States.
- Christin, S., Baumelou, A., Bahri, S., Ben Hmida, M., Deray, G., Jacobs, C., 1990. Acute renal failure due to sulfadiazine in patients with AIDS. *Nephron* 55, 233–234.
- D'Arcy, M.S., 2019. Cell death: a review of the major forms of apoptosis, necrosis and autophagy. *Cell Biol. Int.* 43, 582–592.
- Daudon, M., Frochot, V., Bazin, D., Jungers, P., 2018. Drug-Induced Kidney Stones and Crystalline Nephropathy: Pathophysiology, Prevention and Treatment. *Drugs* 78, 163–201.
- Husna, F., Suyatna, F.D., Arozal, W., Purwaningsih, E.H., 2019. Model Hewan Coba pada Penelitian Diabetes. *Pharm. Sci. Res.* 6, 131–141.
- International Society of Nephrology (ISN), 2021. Acute kidney injury (AKI) [WWW Document]. URL <https://www.theisn.org/commitment-to-kidney-health/focus-areas/acute-kidney-injury/>
- Jannah, R., Setiasih, N.L.E., Suastika, P., 2018. Histopathological of Diabetes Mellitus White Rat Testicle After Given Moringa Leaf Extract. *Bul. Vet. Udayana* 10, 176.
- Jenkins, G.W., Tortora, G.J., 2013. *Anatomy & Physiology From Science To Life, Third. ed.* John Wiley & Sons, Inc., United States.
- Joyce, E., Glasner, P., Ranganathan, S., Swiatecka-Urban, A., 2017. Tubulointerstitial Nephritis: Diagnosis, Treatment, and Monitoring. *Pediatr. Nephrol.* 32, 577–587.

- Kane, D., Murphy, J.M., Keating, S., Wilson, G.F., Mulcahy, F.M., 1996. Renal ultrasonic findings in sulphadiazine-induced renal failure. *Br. J. Radiol.* 69, 925–928.
- KDIGO Acute Kidney Injury Work Group., 2012. KDIGO Clinical Practice Guideline for Acute Kidney Injury. *Kidney Int. Suppl.* 2, 1–138.
- Kesehatan, D.J.K. dan A., 2020. *Farmakope Indonesia Edisi VI*. Kementerian Kesehatan RI, Jakarta.
- Laszik, Z.G., Nadasdy, T., D'Agati, V.D., 2017. *Silva's Diagnostic Renal Pathology, Second. ed.* Cambridge University Press, United Kingdom.
- Lindquist, J.A., Mertens, P.R., 2016. Translational Nephrology: Taking Aim at Tubular Debris. *J. Clin. Exp. Nephrol.* 01, 1–5.
- Mark A. Suckow, S.H.W.C.L.F., 2005. *The Laboratory Rat, Second. ed.* Elsevier Science.
- Maynard, R.L., Downes, N., 2019. *Anatomy and Histology of the Laboratory Rat in Toxicology and Biomedical Research*. Elsevier Inc., United Kingdom.
- Monteiro Sato, A.A., Daud Lotaif, L.A., Elias de Mattos, M.H., Lopes Neto, A.C., 2019. Renal Failure Due to Sulfadiazine Induced Calculi: Case Report and Literature Review. *Acta Urológica Port.* 36, 30–32.
- Nair, A., Jacob, S., 2016. A simple practice guide for dose conversion between animals and human. *J. Basic Clin. Pharm.* 7, 27.
- Ovalle, W.K., Nahirney, P.C., 2021. *Netter'S Essential Histology With Correlated Histopathology, Third. ed.* Elsevier, Inc., Philadelphia.
- Parrot, E., 1979. *Pharmaceutical Technology Fundamental Pharmaceutics, Third. ed.* Minneapolis : Burgess.
- Perazella, M.A., Juncos, L.A., Allon, M., 2020. Clinical Images in Nephrology and Dialysis. *Kidney360* 1.
- PERNEFRI, 2018. 11th Report Of Indonesian Renal Registry 2018. Irr 1–46.
- Rabe, M., Schaefer, F., 2016. Non-transgenic mouse models of kidney disease. *Nephron* 133, 53–61.
- Salampe, M., Mamada, S.S., Rindayani, Mus, S., 2020. Efek Madu Trigona Terhadap Gambaran Histopatologi Ginjal Tikus Putih (*Rattus norvegicus*) Yang Diinduksi Atorvastatin. *Media Farm. Poltekkes Makassar XVI*, 160–169.

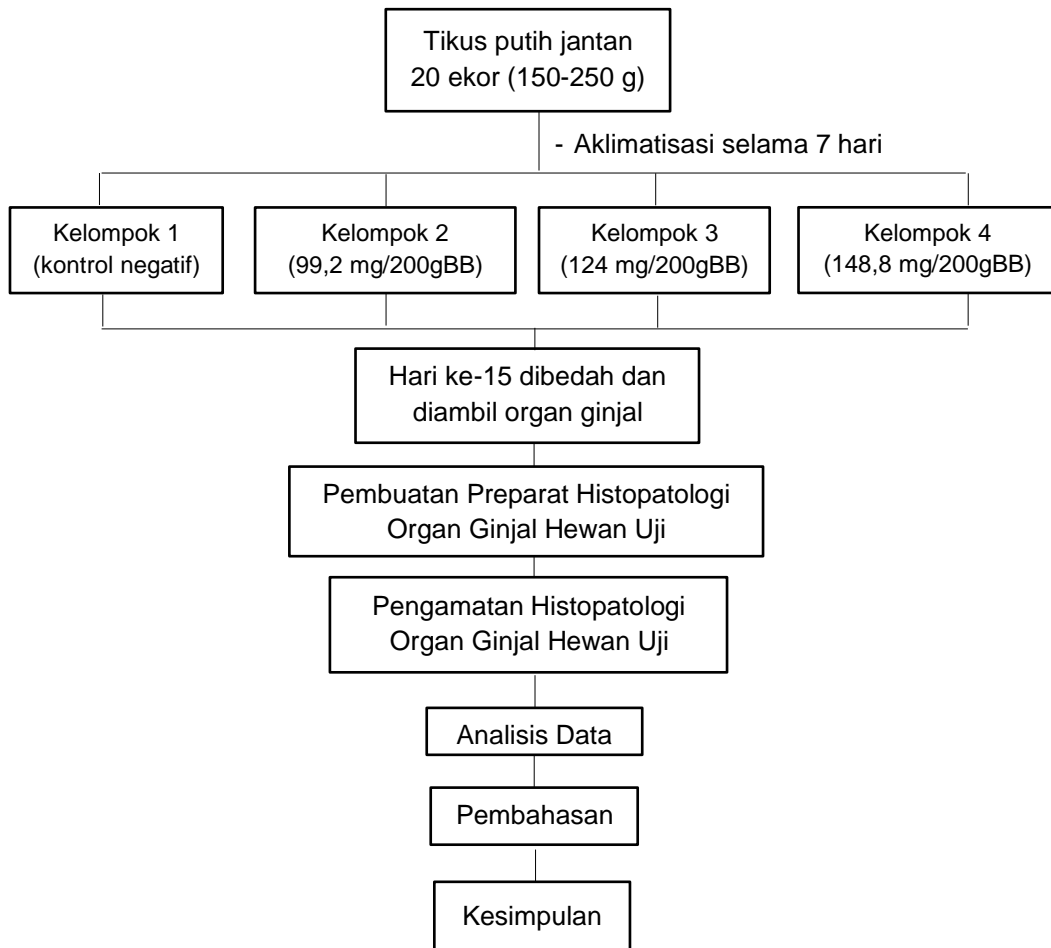
Sherwood, L., 2013. *Introduction to Human Physiology, 8th ed.* Brooks/Cole, Cengage Learning, China.

Stevani, H., 2016. *Praktikum Farmakologi. Kementrian Kesehatan Republik Indonesia*, Jakarta.

Sweetman, S.C., 2009. *Martindale, 36th ed, Notes and Queries.* Pharmaceutical Press, London.

## LAMPIRAN

### Lampiran 1. Skema Kerja Penelitian



**Kelompok I (Kontrol negatif)**

: Hewan uji hanya diberi pakan standar + larutan koloidal Natrium CMC 1% secara per oral (dimulai dari hari ke-1 hingga hari ke-14)

**Kelompok II (99,2 mg/200gBB)**

: Hewan uji diberi pakan standar + suspensi SDZ 99,2 mg/200gBB secara per oral (dimulai hari ke-1 hingga hari ke-14)

**Kelompok III (124 mg/200gBB)**

: Hewan uji diberi pakan standar + suspensi SDZ 124 mg/200gBB secara per oral (dimulai hari ke-1 hingga hari ke-14)

**Kelompok IV (148,8 mg/200gBB)**

: Hewan uji diberi pakan standar + suspensi SDZ 148,8 mg/200gBB secara per oral (dimulai hari ke-1 hingga hari ke-14)