

DAFTAR PUSTAKA

- Ackermann, F., & Eden C. 2011. Strategic Management of Stakeholders: Theory and Practice Long Range Planning,44(3): 179-196 DOI :10.1016/j.lrp.2010.08.001
- Adhikari KP., Goldey P. 2010. Social capital and its —downsidell: The impact on sustainability of induced community-based organizations in Nepal. World Development 38 (2): 184-194.
- Agrawal A. 2001. Common property institutions and sustainable governance of resources. World Development 29(10):1649–1672. DOI: 10.1016/S0305-750X(01)00063-8.
- Ali, M.Saleh. 2009. Teori-Teori Sosial. Bahan Kuliah Program Doktor Ilmu-Ilmu Pertanian. Tidak Dipublikasikan. Program Pascasarjana UNHAS, Makassar.
- Alix-Garcia J. 2008. An exploration of the positive effect of inequality on common property forests. Journal of Development Economics 87: 92–105.
- Andrasmoro, Dony., Endah Evy Nurekawati. 2017. Analisis Pengembangan Kebijakan Hutan Tanaman Rakyat (HTR) Terhadap Peningkatan Kesejahteraan Masyarakat di Kalimantan Barat dan D.I Yogyakarta. *Jurnal Swarnabhumi*. 2 : 1.
- Auzins, A. 2004. Institutional Arrangement: A Gate Towards Sustainable Land Use. Nodic Journal of Surveying and Real Estate Research Vol 1, 2004.
- Barr. C., Resosudarmo, IA., McCarthy J dan Dermawan A. 2006. Forest and Decentralisation in Indonesia : an Overview. Dalam Barr et al (editor) : Decentralisation of forest Administration in Indonesia Implication for Forest Sustainability, Economics Development and Community Livelihood. Bogor. CIFOR
- Berkes F, 2002. Cross-scale institutional linkages: perspectives from the bottom up. In: Ostrom E., Dietz T., Dolsak N., Stern PC., Stonich S., Weber EU.

- (Eds.), *The Drama of the Commons*. National Academy Press, Washington DC, pp. 293–321.
- Bhattacharya P., Pradhan L., Yadav G. 2010. Joint forest management in India: Experiences of two decades. *Resources, Conservation, and Recycling* 54 (8): 469-480.
- Benjamin CE. 2008. Legal pluralism and decentralization: natural resource management in Mali. *World Development* 36: 2255–2276.
- Berkes F. 2008. *Sacred Ecology: Traditional ecological knowledge and resource management*. Philadelphia, PA: Taylor & Francis
- Bixler, R.P., 2014. From community forest management to polycentric governance: assessing evidence from the bottom up. *Soc. Nat. Resour.* 27 (2), 155–169. <http://dx.doi.org/10.1080/08941920.2013.840021>.
- Blomquist W. 2006. "The Policy Process and Large-N Comparative Studies." In Sabatier PA, editor. *Theories of the Policy Process*. Boulder, CO (US): Westview Press.
- Brommley DW. 1992. *Making The Commons Work; Theory, Practice, and Policy*. Bromley DW, editor. California: ICS Press.
- Bryson, JM. 2003. *What To Do When Stakeholders Matter: A Guide to Stakeholder Identification and Analysis Techniques*. A paper presented at the London School of Economics and Political Science. London.
- Bungawali, A. 2012. *Pemodelan Struktur Pengelolaan KPHP Jeneberang*. Tesis tidak diterbitkan. Makassar: Program Pascasarjana Universitas Hasanuddin.
- Bungin B. 2010. *Penelitian Kualitatif*. Kencana Prenada Media Group : Jakarta.
- Casse, T. Milhoj, A. 2011. Community Forestry and Forest Conservation: Friends or Strangers?. *Environmental Policy and Governance* 21: 83-98.
- Claridge G, O'Callaghan , editor. 1995. *Community Involment in Westland Management: Lessons from The Field*. Incorporating the Proceedings of workshop 3: Westland Local People and Development of the International Conference on Westlands and Development held in Kuala Lumpur. Malaysia.
- Cox, M., G. Arnold, and S. V. Tomás. 2010. A Review of Design Principles for Community-based Natural Resource Management. *Ecology and Society* 15(4):38.

- Creswell, J.W. 2014. *Research Design : Qualitative, Quantitative and Mixed Methods Approaches* (Fourth Edi). SAGE Publications.
- Cox, M., G. Arnold, and S. Villamayor. 2010. A Review of Design Principles for Community-Based Natural Resource Management. *Ecology and Society* 15(4):38. <https://doi.org/38>.
- Davenport MA, Bridges CA, Mangun JC, Carver AD, Williard KW, Jones EO. 2010. Building local community commitment to wetlands restoration: A case study of the Cache River Wetlands in Southern Illinois, USA. *Environmental Management* 45 (4): 711-722. doi: 10.1007/s00267-010-9446-x.
- Dietz T, Ostrom E,. Stern PC. 2003. The struggle to govern the commons. *SCIENCE* 302: 1907-1912. doi:10.1126/science.1091015
- Djogo, T.S., D. Suharjito., dan M. Sirait. 2003. Kelembagaan dan Kebijakan dalam Pengembangan Agroforestri. Bahan ajaran Agroforestri 8. ICRAF. www.worldagroforestrycentre.org
- Dunggio, I. 2012. Model Kelembagaan Pengelolaan Hutan Lindung Gunung Damar (Kasus Pengelolaan Hutan Lindung Gunung Damar Di Propinsi Gorontalo). Disertasi tidak diterbitkan. Bogor: Sekolah Pascasarjana IPB.
- Eden,C. & Ackermann ,F. 1998. *Making Strategy: The Journey of Strategic Management*. London: Sage Publications.
- Edmunds, D., Wollenberg, E., Contreras, A. P., Dachang, L., Kelkar, G., Nathan, D.,Singh, N. M. 2003. *Local Forest Management : The Impacts of Devolution Policies*. (D. Edmunds & E. Wollenberg, Eds.). Center for International Forestry Research (CIFOR).
- FAO, 2000. *Definition and Basic Principles of Sustainable Forest Management in Relation to Criteria and Indicators* (.<http://www.fao.org>, diakses 15 Juli 2019).
- Faisal S. 2010. *Format-Format Penelitian Sosial*. Jakarta (ID): PT. Raja Grafindo Persada.
- Febriyano IG. 2014. Politik ekologi pengelolaan mangrove di Kabupaten Pesawaran Provinsi Lampung. Disertasi tidak diterbitkan. Bogor: Sekolah Pascarajana IPB.
- Freeman, RE. 1984. *Strategic Management: A Stakeholder Approach*. Pitman. Boston.
- Gautam AB, Shivakoti GP. 2005. Conditions for successful local collective action in forestry: some evidence from the hills of Nepal. *Society & Natural Resources* 18:153–171. DOI: 10.1080/08941920590894534.

- Giessen L, Krott M, & Moellmann T. 2014. Increasing representation of states by utilitarian as compared to environmental bureaucracies in international forest and forest-environmental policy negotiations. *Forest Policy and Economics* 38, 97-104.
- Gummesson E. 2007. Case study Research. Gustavsson B (eds). *The Principles of Knowledge Creation: Research Methods in the Social Sciences*. Cheltenham, UK; Northampton, MA, USA: Edward Elgar
- Harisetijono dan Kurniadi. 2002. Upaya Peningkatan Kesejahteraan Masyarakat Melalui Pembangunan Hutan Kemasyarakatan. *Aisuli* no. 17 tahun 2002. Kupang: Balai Litbang Kehutanan Bali dan Nusa Tenggara.
- Hardin, G. 1968. The tragedy of the commons. *Science* 162:1243-1248.
- Hardin G. 1991. The tragedy of the unmanaged commons: Population and the disguises of providence. In: *Commons without tragedy*, Andelson RV, editor. Savage: MD Barners and Noble.
- Hasan, L. 2000. Analysing Institutional Set-Up of Forest Management in Pakistan. Research report No. 182. Pakistan Institute of Development Economics, Islamabad.
- Hayami, Y., & V.W. Ruttan. 1985. *Agriculture Development: An International Perspective*. The John Hopkins Press, Baltimore and London.
- Hermanto., Swastika DKS. 2011. Penguatan kelompok tani: Langkah awal peningkatan kesejahteraan petani. *Jurnal Analisis Kebijakan Pertanian* 9 (4): 371-390.
- Hobley M, Campbell JY, Bhatia A. 1996. Community forestry in India and Nepal: learning from each other. *Mountain Natural Resources*. ICIMOD. Number 96/3.
- Hoessin, B. dan Prasodjo E. 2009. Konsep Pembagian Kewenangan (Uruasan) Antar Tingkat Pemerintahan. <http://www.desentralisasi.org>.
- Hubo, C., & Krott, M. (2010). Politiksektoren als Determinanten von Umweltkonflikten am Beispiel invasiver gebietsfremder Arten. *Umwelt- Und Technikkonflikte*, 219–238. doi:https://doi.org/10.1007/978-3-531-92354-3_11
- Imperial, Mark T. 1999. Institutional Analysis and Ecosystem-Based Management: The Institutional Analysis and Development Framework. *Environmental Management*. 24(4): 449–65. DOI:10.1007/s002679900246

- Irawan P. 2007. Penelitian Kualitatif dan Kuantitatif Untuk Ilmu-Ilmu Sosial. Jakarta: Departemen Ilmu Administrasi Fakultas Ilmu Sosial dan Ilmu politik, Universitas Indonesia.
- Karsudi., Soekmadi R., Kartodihardjo H. 2010. Model pengembangan kelembagaan pembentukan wilayah kesatuan pengelolaan hutan di Provinsi Papua. *Jurnal Manajemen Hutan Tropika* Volume XVI, (2): 92-100.
- Kartodihardjo H, Murtalaksono K, Sudadi U. 2004. *Institusi Pengelolaan Daerah Aliran Sungai: Konsep dan Pengantar Analisis Kebijakan*. Bogor: Fakultas Kehutanan Institut Pertanian Bogor.
- Kecamatan Nambo dalam Angka. 2018. Badan Pusat Statistik Kabupaten Banggai.
- Keputusan Menteri Kehutanan Nomor 31/Kpts-II/2001 tentang Penyelenggaraan Hutan Kemasyarakatan. Tanggal 12 Pebruari 2001.
- Kim Y-s, Bae, JS, Fisher LA, Latifah S, Afifi M, Lee SM, & Kim I-a. 2015. Indonesia's Forest Management Units: Effective intermediaries in REDD implementation? *Forest Policy and Economics* 62, 69-77.
- Kontan. 06 Agustus 2018. *KLHK Dorong Kelembagaan unit Kesatuan Pengelolaan Hutan*.
- Koontz TM. 2005. We Finished the Plan, So Now What? Impacts of Collaborative Stakeholder Participation on Land Use Policy. *The Policy Studies Journal*. 33(3):459–481. DOI: 10.1111/j.1541-0072.2005.00125.x
- Krott, M. (2005). *Forest Policy Analysis* (translated by Renée von Paschen). Springer Publications.
- Krott M, Bader A, Schusser C, Devkota R, Maryudi A, Giessen L, & Aurenhammer H. 2014. Actor-centered power: the driving force in decentralized community based forest governance. *Forest Policy and Economics* 49,34-42.
- Laine M. 2010. The Nature of Nature as a Stakeholder. *J Bus Ethics*.
- Lang, C. dan Pye, O. 2001. Blinded by Science. The Invention of Scientific Forestry and its Influence in The Mekong region, *Watershed* 6(2) :25 -34.
- Laporan Kinerja Direktorat Penyiapan Kawasan Perhutanan Sosial Tahun 2019. 2020. Kementrian Lingkungan Hidup dan Kehutanan Direktorat Penyiapan Kawasan Perhutanan Sosial.

- Larson, A.M., Soto, F., 2008. Decentralization of natural resource governance regimes. *Annu. Rev. Environ. Resour.* 33 (1), 213–239. <http://dx.doi.org/10.1146/annurev.envIRON.33.020607.095522>.
- Luhmann, N. 1979. *Trust and Power*. Chichester: John Wiley & Sons.
- Lutz MB. 2011. Trust-based social capital, institutions and development. *The Journal of Socio Economics* 40 (2011): 335-346. Elsevier.
- Manullang, S. 2018. *Teori dan Teknik Analisis Stakeholder Untuk Manajemen Proyek, organisasi, bisnis, kajian isu/kebijakan, politik, dan keseharian Anda*. IPB Press.
- Maryudi, Ahmad. 2016. Arahana Tata Hubungan Kelembagaan Kesatuan Pengelolaan Hutan (KPH) Di Indonesia. *Jurnal Ilmu Kehutanan*. 10: 58.
- Mattessich, P.W.; M. Murray-Close; and B.R. Monsey. 2001. *Collaboration: What Makes it Work*. Amherst H.Wilder Foundation. Saint Paul, Minnesota.
- Martial, T., 2014. *Agroforestri. Pola Pemanfaatan Tanah Berkelanjutan*. Yogyakarta : Graha Ilmu
- McIntyre A. 2008. *Participatory action research*. Sage Publications. Thousand Oaks, California.
- Meinzen Dick, R., Knox. And M. Di Gregorio. 2001. *Collective Action, Property Rights, and devolution of Natural Resource Management : Exchange of Knowledge and Implication for Policy*. Editors : Feldafing, Germany: German Foundation for International Development (DSE) / Food and Agriculture Development Centre (ZEL).
- Mutaqin, Z. 2012. *Analisis Kelembagaan Gabungan Kelompok Tani dalam Pengelolaan Hutan Kemasyarakatan di DAS Sekampung Hulu. Studi Kasus pada Gapoktan Hijau Makmur*. Tesis tidak diterbitkan. Bandar Lampung: Program Pascasarjana Universitas Lampung.
- Muntasib EKSH. 2014. Mechanism of stakeholder relationship in nature tourism management in Indonesia. *TEAM Journal of hospitality and tourism*, 11 (1), 81-92.
- Nagendra H, Karna B, Karmacharya M. 2005. Examining institutional change: social conflict in Nepal's leasehold forestry programme. *Conservation and Society* 3: 72–91.

- Noor, Juliansyah. 2011. *Metode Penelitian Skripsi, Tesis, Desertasi dan Karya Ilmiah*. Jakarta :Kencana Prenada Media Group.
- North DC. 1990. *Institutions, Institutional Change and Economic Performance*. New York: Cambridge university press.
- Nugroho B, Hariadi K dan Soedarso S. 2013. *Pola Pengelolaan Keuangan Badan Layanan Umum Daerah Menuju Kemandirian KPH*. Direktorat Wilayah Pengelolaan dan Penyiapan Areal Pemanfaatan Kawasan Hutan Direktorat Jenderal Planologi. Kementerian Kehutanan.
- Nugroho, B., 2013. *Reformasi Kelembagaan dan Tata Pemerintahan: Faktor Pemungkin Menuju Tata Kelola Kehutanan Yang Baik*. Di dalam: Kartodihardjo, editor. *Kembali Ke Jalan Lurus: Kritik Penggunaan Ilmu dan Praktek Kehutanan Indonesia*. Bogor (ID): FORCI Development.
- Nurrochmat, D.R. 2005. *The Impacts of Regional Autonomy: On Political Dynamics, Socio-economics and Forest Degradation; Case of Jambi-Indonesia*. Cuvillier Verlag.
- Nursidah, Nugroho B, Darusman D, Rusdiana O, Rasyid Y. 2012. *Pengembangan institusi untuk membangun aksi kolektif lokal dalam pengelolaan hutan kawasan lindung SWPDAS Arau, Sumatera barat*. *Jurnal Manajemen Hutan Tropika Vol XVIII (1) 18-30*. doi: 10.7226/jtfm.18.1.18
- Oakerson RJ. 1992. *Analyzing the commons: A framework*. In: Daniel W, Bromley, et al. editors. *Making the Commons Work: Theory, Practice, and Policy*. San Francisco (US): ICS Press, pp. 41–59.
- Ostrom E. 1990. *Governing the Commons. The Evolution of Institutions for Collective Action*. Cambridge University Press.
- Ostrom E. 1999. *Self Governance and Forest Resources*. Occasional Paper Number 20. Centre for International Forestry Research Bogor.
- Ostrom E, Crawford S. 2005. *A grammar of institutions*. In Ostrom E (Ed.) *Understanding Institutional Diversity*. Princeton (US): Princeton University Press.
- Ostrom E, Gardner G, Walker J. 2006. *Rule, Games, & Common-Pool Resources*. Michigan (US): University of Michigan Press.
- Ostrom E. 2008. *Doing Institutional Analysis: Digging Deeper Than Markets and Hierarchies*. Di dalam: Menard C, Shirley MM, editor. *Handbook of new institutional economics*. Berlin: Springer-Verlag Berlin Heidelberg.

- Persson, J., Prowse, M. 2017. Collective action on forest governance: An institutional analysis of the Cambodian community forest system. *Forest Policy and Economics* 83 (2017) 70-79. doi:10.1016/j.forpol.2017.06.008.
- Polk, Merritt, 2011. Institutional Capacity-building in Urban Planning and Policy-making For Sustainable Development: Success or Failure?. *Planning Practice & Research*, 26 (2), pp. 185-206.
- Pasandaran, E., 2004. Consequence of Policy Change on Indonesian Irrigation System Management. *Jurnal Litbang Pertanian* 23 (3): 82-90.
- Putnam, H. 2002. *The Collapse of the Fact/Value Dichotomy: and Other Essays*. Harvard: Harvard University Press.
- Pratiwi S. 2008. Model Pengembangan Institusi Ekowisata untuk Penyelesaian Konflik di Taman Nasional Gunung Halimun-Salak. Disertasi Tidak Diterbitkan. Bogor: Institut Pertanian Bogor.
- Race D., Millar J. 2008. Social and community dimensions to ACIAR project. (ACIAR Training Manual). Australian Centre for International Agricultural Research, Canberra: Charles Sturt University.
- Reischl, G. 2012. Designing institutions for governing planetary boundaries Lessons from global forest governance. *Ecological Economics* 81, 33–40. doi :10.1016/j.ecolecon.2012.03.001.
- Rianse, Usman., Abdi. 2010. *Agroforestri, Solusi Sosial dan Ekonomi Pengelolaan Sumber Daya Hutan*. Alfabeta: Bandung.
- Ribot, JC. Dan Larson , AM. 2005. *Democratic Decentralisation through a Natural resource Lens*. London and New York. RoutledgeTaylor & Francis Group.
- Rodgers, Gerry. 1994. *Workers, Institutions and Economic Growth in Asia*. Switzerland: International Institute for Labor Studies.
- Roy, S.B. 1999. "Joint Forest Management in India." Presentation made for Workshop on Training for Social Forestry Official", Bogor, April 1999.
- Roy, AKD., Alam K., Gow J. 2012. Are view of the role of property rights and forest policies in management of the Sundarbans mangrove forest in Bangladesh. *Forest Policy and Economics* 15 (1): 46-53.
- Rustiadi, E. 2006. *Sumberdaya Bersama: Kerangka Teori Dasar, Isu dan Tantangan Masa Depan di Indonesia*. Bahan Kuliah m.a. Sistem Penataan Ruang dan Lingkungan (PSL 705). Program Studi Pengelolaan Sumberdaya Alam dan Lingkungan. Sekolah Pascasarjana Institut Pertanian Bogor. Bogor.

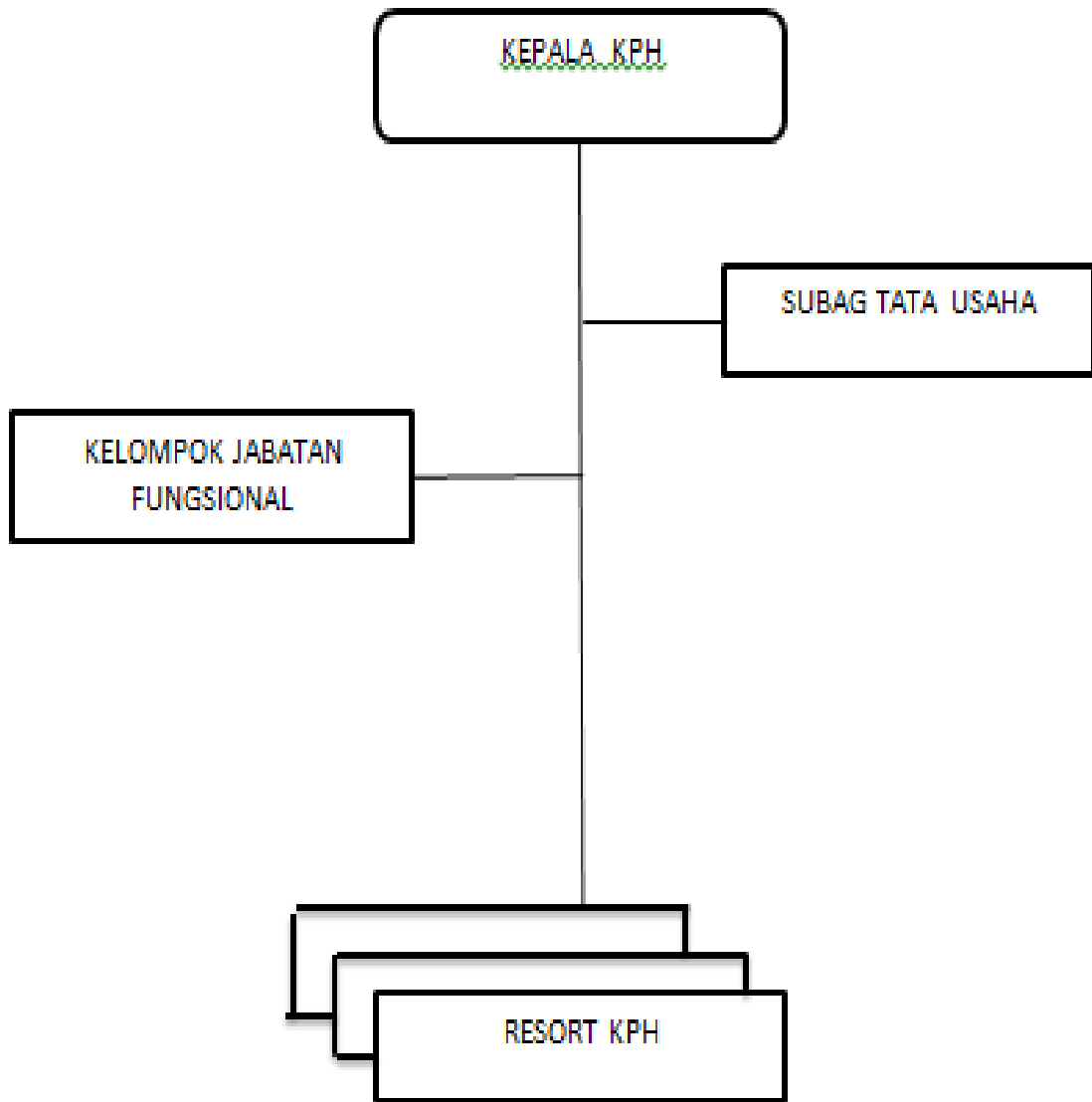
- Sabatier, PA, Leach W. Lubell M, Pelkey N. 2005. Theoretical frameworks explaining partnership success. In Sabatier PA, Lubell M, Focht W, editors. *Swimming upstream: Collaborative approaches to watershed management*. Cambridge (US): MIT Press.
- Safitri, M.A. 2013. Keniscayaan Transdisiplinartitas Dalam Sosio-Legal Terhadap Hutan, Hukum dan Masyarakat. Di dalam : Kartodihardjo, editor. *Kembali Ke Jalan Lurus: Kritik Penggunaan Ilmu dan Praktek Kehutanan Indonesia*. Bogor (ID): FORCI Development.
- Sahide, M.A.K., S. Supratman, A. Maryudi, Y.-S. Kim and L. Giessen. 2016. Decentralisation Policy as Recentralisation Strategy: Forest Management Units and Community Forestry in Indonesia. *International Forestry Review*, (Online), Vol.18. No.1. (<https://nau.pure.elsevier.com/en/publications/>, diakses 15 Juni 2019).
- Salman, Darmawan. 2012. Manajemen Perencanaan Berbasis Komunitas dan Mekanisme Kolaborasi Serta Peran Fasilitator. Sulawesi Capacity Development Project Kerjasama Teknis Kemendagri RI, Pemrov. Se-Sulawesi , 29 Pemkab/Kota di Sulawesi dengan Japan International Cooperation Agency (JICA).
- Sardjono, M.A. 2013. Membawa Perhutanan Sosial Indonesia Ke Upaya Yang Lebih Menjanjikan. Di dalam: Kartodihardjo, editor. *Kembali Ke Jalan Lurus: Kritik Penggunaan Ilmu dan Praktek Kehutanan Indonesia*. Bogor (ID): FORCI Development.
- Schlager E, Blomquist W. 1996. A comparison of three emerging theories of the policy process. *Political Research Quarterly*. 49(3):31–50.
- Schwilch, G., Bachmann, F., Valente, S., Coelho, C., Moreira, J., Laouina, A., Chaker, M., Aderghal, M., Santos, P., Reed, M.S. 2012. A structured multi-stakeholder learning process for sustainable land management. *J. Environ. Manag.* 107, 52–63
- Shirley, M.M, 2008. Institutions and Development Chapter 24 in Menard, C,T & Shirley, M.M (eds). *Handbook of New Institutional Economics*. New York: Springer, pp.611-638.
- Sofyan, A. 2012. Nasib Kehutanan Indonesia di Era Otonomi Daerah. *Kompasiana*, 6.
- Soedomo S. 2013. Institusi dalam Perspektif Permainan. Di dalam: Kartodihardjo, editor. *Kembali Ke Jalan Lurus: Kritik Penggunaan Ilmu dan Praktek Kehutanan Indonesia*. Bogor (ID): FORCI Development.

- Suharti, S., Darusman D., Nugroho B., & Sundawati L. 2016. Kelembagaan dan Perubahan Hak Akses Masyarakat dalam Pengelolaan Hutan Mangrove di Sinjai Timur, Sulawesi Selatan. *Jurnal Sosiologi Pedesaan Sodality*. 165-175
- Suharti, S., Ginoga, K.L., Murniati, Oktavia, D., & Windyoningrum, A. 2017. Langkah Strategis menuju Percepatan Realisasi Capaian Program Perhutanan Sosial. Policy Brief Pusat Penelitian dan Pengembangan Sosial, Ekonomi, Kebijakan, dan Perubahan Iklim. Badan Penelitian Pengembangan dan Inovasi Kementrian Lingkungan Hidup dan Kehutanan, 11(8), 1-8.
- Suharjito, D., A. Khan, W.A, Djatmiko, M.T. Sirait, S. Evelyana. 2000. Karakteristik Pengelolaan Hutan Berbasis Masyarakat. Yogyakarta: Aditya Media.
- Suharjito, D. (2009). Devolusi Pengelolaan Hutan di Indonesia : Perbandingan Indonesia dan Philipina (Devolution of Forest Management in Indonesia : Comparison between Indonesia and Philipina). *Jmht*, XV(3), 123–130.
- Supratman. 2008. Desain Model Pembangunan Kesatuan Pengelolaan Hutan (KPH) di Kabupaten Mamuju Provinsi Sulawesi Barat. *Jurnal Perenial* 5 (1):36-44.
- Suprianto, B., 2019. Inovasi Kebijakan Perhutanan Sosial Untuk Keadilan Pengelolaan Sumberdaya alam dan Kesejahteraan Masyarakat. Orasi Ilmiah Dies Natalis Fakultas Kehutanan ke-5 Universitas Sumatera Utara. Medan: USU Press.
- Sunderlin W, Hatcher J, Liddle M. 2008. From Exclusion to Ownership? Challenges and Opportunities in Advancing Forest Tenure Reform. Rights and Resource Initiative: Washington, DC.
- Suhirman, Alamsyah, Z., Zaini, A., Sulaiman, & Nikoyan, A. (2012). Studi Perencanaan & Penganggaran bagi Pengelolaan Hutan berbasis Masyarakat di Indonesia. Jakarta: Kemitraan
- Suryandari, E. Y., & Alviya, I. (2009). Implementation and Strategy of Banjar Forest Mangement Unit Development. *Jurnal Analisis Kebijakan Kehutanan*, 6(1), 57–70. Retrieved from <http://ejournal.forda-mof.org/ejournal-litbang/index.php/JAKK/article/view/341>.
- Syahyuti. 2012. Tinjauan Sosiologis Konsep Kelembagaan dan Upaya Membangun Rumusan yang Lebih Operasional. (Online <http://kelembagaandas/pengertian-kelembagaan/syahyuti>). Diakses pada 27 Juli 2019.

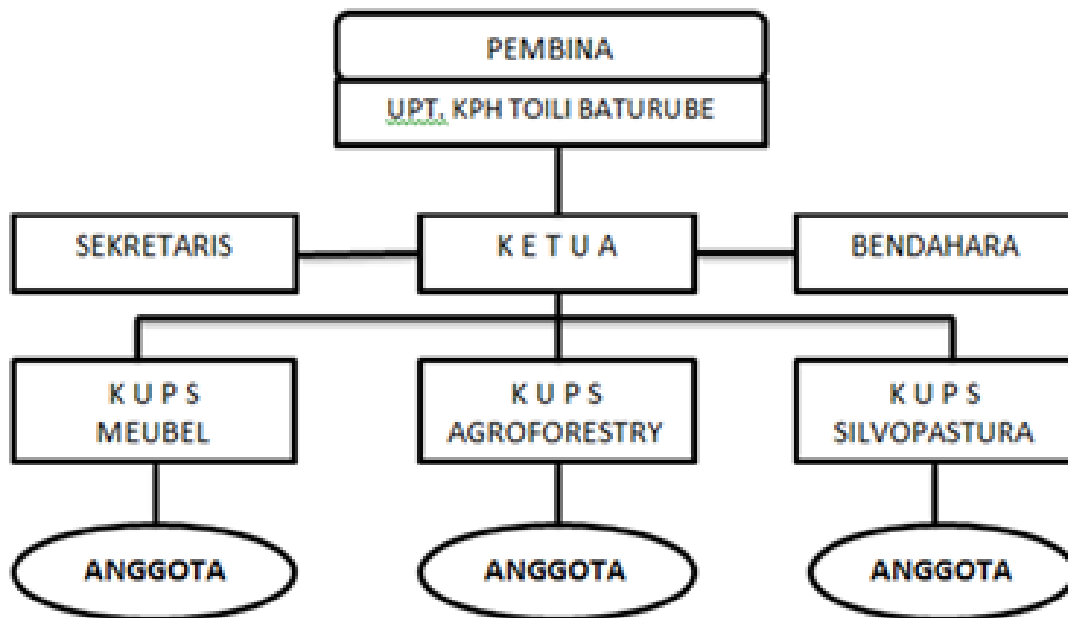
- Syahputra, OK. H. 2018. Kelembagaan Pengelolaan Hutan Mangrove Berbasis Masyarakat: Kasus KPH Wilayah 3 Provinsi Aceh. Disetasi tidak diterbitkan. Bogor: Sekolah Pascasarjana IPB.
- Taba`ra, J. D. & Pahl-Wostl, C, 2007. Sustainability learning in natural resource use and management, *Ecology and Society*, 12(2).
- Tajuddin, D. 2000. Manajaemen Kolaborasi. Pustaka Latin Bogor.
- Tajuddin,. Supratman., Darmawan., Yusran. 2019. Bridging social forestry and forest management units: Juxtaposing policy imaginaries with implementation practices in a case from Sulawesi. *Forest and Society*. Vol. 3(1): 97-113.
- Tabellini G. 2010. Culture and institutions: Economic development in the regions of Europe. *Journal of the European Economic Association* 8 (4): 677-716.
- Uphoff, N. 1986. Local Institutional Development. An Analytical Sourcebook with Cases. West Hartford Connecticut: Kumarian Press.
- Van der Ploeg, J. D. and D. Roep. 2003. Multifunctionality and Rural Development: the Actual Situation in Europe. In *Multifunctional Agriculture. A New Paradigm for European Agriculture and Rural Development*, eds. G. Huylenbroeck and G. Durand. Aldershot: Ashgate.
- Wang, Y., Zhang, M. and Kang, J. 2019. How does context affect self-governance? Examining Ostrom's design principles in China. *International Journal of the Commons* 13(1):660-704. doi:10.18352/ijc.916.
- Wallis, Joe; Brian, Dollery. 2002. Social Capital and Local Government Capacity. *Australian Journal of Public Administration*, 61 (3); 76-85.
- Williamson, O.E. 1996. *The Mechanism of Governance*. Oxford University Press. New York, USA.
- World Bank. 2005. *Forest Institutions in Transition: Experience and Lessons from Eastern Europe*. PROVOR World Bank. Washington. United States.
- World Bank. 2009. *Roots for Good Forest Outcomes: an Analytical Framework for Governance Reforms*. Washinton DC.
- Yusran, J. 2012. *Hutan dan Masyarakat. Tinjauan dalam Perspektif Kebijakan dan Sosial Ekonomi*. IPB Press Bogor.

Zakaria W. A. 1992. Analisis Kelembagaan Perkumpulan Petani Pemakai Air (P3A) Irigasi Pompa Dalam. Tesis Tidak Diterbitkan. Bogor: Program Pasca Sarjana IPB.

LAMPIRAN 1. STRUKTUR ORGANISASI



Gambar 1. Struktur Organisasi KPHP Model



Gambar.2. Struktur Organisasi Kelompok Tani Hutan Kecamatan Nambo