

DAFTAR PUSTAKA

- Arifa, A. N., Sucipta, I. B. E., & Prambada, O. (2018). Analisis Petrografi dan Kimia Mineral Batuan Vulkanik Letusan Gunung Sinabung Tahun 2016. *Seminar Nasional Kebumihan Ke-11*, 897–907. <https://repository.ugm.ac.id/id/eprint/274919>
- Arimuko, A., Wibawa, A. S. W., & Firmansyah, A. (2019). Analisis Perbandingan Penentuan Hiposentrum Menggunakan Metode Grid Search , Geiger , dan Random Search : Studi Kasus pada Letusan Gunung Sinabung 2017. *Journal for Physics Education and Applied Physics*., 1(2), 22–28.
- Arisalwadi, M., Maryanto, S., & Triastuty, H. (2017). Analisis Spektral dan Waveform Cross Correlation Tremor Vulkanik Gunungapi Bromo Jawa Timur Pada Letusan Tahun 2016. *Natural B*, 4(1), 57–64. <https://natural.ub.ac.id/index.php/natural-b/article/viewFile/388/pdf>
- Astuti, D. (2021). *STUDI KEGEMPAAN DAN ANALISIS AKTIVITAS GUNUNG SINABUNG (STUDI KASUS AKTIVITAS PERIODE OKTOBER 2017)*. Universitas Mataram Repository. <http://eprints.unram.ac.id/20967/>
- Avestasari, N. (2017). *Karakterisasi Gempa Vulkanik Gunungapi Gede di Jawa Barat Periode November 2011 - Maret 2012*. Universitas Gadjah Mada.
- Bulo, D., Djayus, Supriyanto, & Hendrawanto, B. (2020). Penentuan Titik Epicenter dan Hypocenter Serta Parameter Magnitude Gempa Bumi Berdasarkan Data Seismogram. *Jurnal Geosains Kutai Basin*, 3(1), 1–8.
- Febriaty, H. (2015). Dampak Erupsi Gunung Sinabung Terhadap Pendapatan Dari Sektor Pariwisata Di Kabupaten Karo. *Jurnal Ilmu Ekonomika Dan Studi Pembangunan*, 15(1), 53–68. <https://media.neliti.com/media/publications/78325-ID-dampak-erupsi-gunung-sinabung-terhadap-p.pdf>
- Fowler, C. M. R. (2005). *The solid earth: an introduction to global geophysics* (1st ed.). Combridge University Press. <https://doi.org/10.1029/90eo00309>
- Gosal, L. C., Tarore, R. C., & Karongkong, H. H. (2018). Analisis Spasial Tingkat Kerentanan Bencana Gunung Api Lokon Di Kota Tomohon. *Jurnal Spasial*, 5(2), 229–237.
- Haerudin, N., Alami, F., & Rustadi. (2019). *Mikroseismik, Mikrotremor dan Microearthquake dalam Ilmu Kebumihan*. Pusaka Media.
- Hafni, R., & Lubis, L. S. (2016). Dampak Erupsi Gunung Sinabung Terhadap Kondisi Sosial Ekonom Petani Di Desa Suka Meriah Kecamatan Payung Kabupaten Karo. *Jurnal Ilmu Ekonomi Dan Studi Pembangunan*, 16(1), 17–31.

- Harrington, R. M., & Brodsky, E. E. (2007). Volcanic hybrid earthquakes that are brittle-failure events. *Geophysical Research Letters*, 34(6). <https://doi.org/10.1029/2006GL028714>
- Hidayat, N., & Santoso, E. W. (1997). Gempa Bumi Dan Mekanismenya. In *Alami* (Vol. 2, pp. 50–52).
- Hillary, K. (2017). *ANALISIS SPEKTRAL SINYAL SEISMIK GUNUNG SINABUNG PERIODE JULI - NOVEMBER 2013 UNTUK KARAKTERISASI TIPE-TIPE GEMPA VULKANIK*. INSTITUT TEKNOLOGI BANDUNG.
- Hudha, S. N., Harmoko, U., Widada, S., Yusuf, D. H., Yulianto, G., & Sahid. (2014). Penentuan Struktur Bawah Permukaan Dengan Menggunakan Metode Seismik Refraksi Di Lapangan Panas Bumi Diwak Dan Derekan , Kecamatan Bergas , Kabupaten Semarang. *Youngster Physics Journal*, 3(3), 263–268.
- Indrastuti, N. (2014). Studi Kegempaan Dan Seismik Tomografi Gunung Sinabung. In *Institut Teknologi Bandung*. Institut Teknologi Bandung.
- Ismail, N., Yanis, M., Armanda, L., & Surbakti, M. S. (2019). Analisis Kerentanan Situs Heritage Terhadap Ancaman Letusan Gunung Api Sinabung. *Journal Geografi*, 11(1), 76–85.
- Jufriadi, A., Maryanto, S., Susilo, A., Purwanto, B. H., & Hendrasto, M. (2013). Analisis Sinyal Seismik Untuk Mengetahui Proses Internal Gunung Ijen Jawa Timur. *Jurnal Neutrino*, 6(1), 22–30. <https://doi.org/10.18860/neu.v0i0.2443>
- Julian, R., & Suharno. (2013). Studi Gelombang Seismik Gempa Vulkanik Gunung Sinabung Untuk Menentukan Karakteristik Mekanisme Vulkanik. *Jurnal Geofisika Eksplorasi*, 1(2).
- Kurniawan, S. E., & Saputri, F. (2019). Relokasi Hiposenter Gempabumi Donggala Tahun 2018 Menggunakan Metode Hyporelocate. *Jurnal Meteorologi Klimatologi Dan Geofisika*, 6(1), 13–22. <https://doi.org/10.36754/jmkg.v6i1.110>
- Linda, F. N., Lepong, P., & Djayus. (2019). Interpretasi Kecepatan Gelombang Seismik Refraksi Tomografi Dalam Penentuan Litologi Bawah Permukaan di Desa Bhuana Jaya (Studi Kasus: PT. KHOTAI MAKMUR INSAN ABADI). *Jurnal Geosains Kutai Basin*, 2(2).
- Lubis, F. W., Sabarina, Y., & Masril, M. (2019). Penanganan Bencana Erupsi Gunung Sinabung Ditinjau dari Aspek Komunikasi dan Koordinasi. *Jurnal Simbolika*, 5(1), 1–22.
- Madrinovella, I., Widiyantoro, S., Nugraha, A. D., & Triastuty, H. (2012). Studi Penentuan dan relokasi Hiposenter Serta Mekanisme Fokus Gempa Mikrodi Sekitar Cekungan Bandung. *Jurnal Geofisika*, 13(2), 80–88.

- Minakami, T. (1974). Seismology of Volcanoes in Japan. In *PHYSICAL VOLCANOLOGY* (Vol. 6, pp. 1–27). <https://doi.org/10.1016/b978-0-444-41141-9.50007-3>
- Municha, D. H., Iryanti, M., & Triastuty, H. (2016). Penentuan Karakteristik Tremor Gunungapi Semeru Jawa Timur Berdasarkan Analisis Spektral (Studi Kasus: Oktober 2015-Desember 2015). *Wahana Fisika*, *1*(1), 42–53. <https://doi.org/10.17509/wafi.v1i1.4530>
- Mustafa, B. (2010). Analisis Gempa Nias Dan Gempa Sumatera Barat Dan Kesamaannya Yang Tidak Menimbulkan Tsunami. *Jurnal Ilmu Fisika*, *2*(1), 44–50. <https://doi.org/10.25077/jif.2.1.44-50.2010>
- Muzani, Setiawan, C., & Warnadi. (2020). *Gunung Api Sinabung*. Penerbit Metaphor.
- Nishi, K. (2005). Hypocenter Calculation Software GAD (Geiger's method with Adaptive Damping). *Silver Expert JICA Indonesia*, 1–5.
- Novianta, M. A. (2008). Pengenalan Pola Sinyal Seismik Gunung Merapi dengan Alihraman Gelombang-Singkat. *Jurnal Teknologi Academia Ista*, *12*(2), 244–250.
- Nurwihastuti, D. W., Astuti, A. J. D., Yuniastuti, E., & Perangin-angin, R. B. B. (2019). *Pengurangan Risiko Bencana Erupsi Gunung Sinabung* (1st ed.). elmatara.
- PEMDA KARO. (2018). *Laporan Aktivitas Gunung Sinabung Atas Kejadian Erupsi Tanggal 19 Februari 2018*. Website Kabupaten Karo. <https://www.karokab.go.id/id/pengumuman-3/7029-laporan-aktivitas-gunung-sinabung-atas-kejadian-erupsi-tanggal-19-februari-2018>
- PEMDA KARO. (2020). *Laporan Aktivitas Gunungapi Tahun 2020*. Website Kabupaten Karo. <https://www.karokab.go.id/id/g-sinabung/laporan-aktivitas-gunungapi/8894-laporan-gunung-sinabung-tanggal-14-agustus-2020>
- Perdana, I. W. (2013). *Klasifikasi Jenis Gempa Gunung Berapi Menggunakan Jaringan Syaraf Tiruan Backpropagation*. UIN Maulana Malik Ibrahim.
- Putri, L. P., Suharno, Mulyatno, B. S., & Kristiatio. (2013). Analisis Karakteristik dan Klasifikasi Gempa pada Gunung Lokon Berdasarkan Rekaman Data Seismogram April - Mei 2012. *Jurnal Geofisika Eksplorasi*, *1*(2), 19–31.
- PVMBG. (2019). *Laporan Kebencanaan Geologi 11 Juli 2019*. Kementerian Energi Dan Sumber Daya Mineral. <http://www.vsi.esdm.go.id/index.php/gerakan-tanah/kejadian-gerakan-tanah/1519-laporan-singkat-pemeriksaan-gerakan-tanah-di-kecamatan-pulung-kabupaten-ponorogo-provinsi-jawa-timur>
- PVMBG. (2020a). Jenis Gempa yang Terjadi pada Peripde 01 September - 30 November 2020. *Pusat Vulkanologi Dan Mitigasi Bencana Alam*.

- PVMBG. (2020b). *Laporan Kebencanaan Geologi 8 Agustus 2020*. Kementerian Energi Dan Sumber Daya Mineral. <https://vsi.esdm.go.id/index.php/kegiatan-pvmbg/berita-harian-kebencanaan-geologi/3193-laporan-kebencanaan-geologi8-agustus-2020>
- Ramdhan, M., Priyobudi, Kristyawan, S., & Sembiring, A. S. (2020). Seismisitas di Wilayah Jawa Tengah dan Sekitarnya Berdasarkan Hasil Relokasi Hiposenter dari Empat Jaringan Seismik Menggunakan Model Kecepatan 3-D. *Eksplorium*, 41(1), 61–72. <https://doi.org/10.17146/eksplorium.2020.41.1.5828>
- Roemaf, S. R. A. (2013). Analisa Sesar Aktif Menggunakan Metode Focal Mechanism (Studi Kasus Data Gempa Sepanjang Cincin Api Zona Selatan Wilayah Jawa Barat Pada Tahun 1999-2009). *Jurnal Neutrino*, 5(2), 80–86.
- Saputri, D., & Pujiastuti, D. (2020). Analisis Kecocokan Nilai Percepatan Tanah Pulau Lombok Berdasarkan Perhitungan Empiris dengan Data Percepatan Tanah dari Akselerograf di Stasiun Mataram. *Jurnal Fisika Unand*, 9(1), 79–84.
- Shearer, P. M. (2009). *Introduction To Seismology* (2nd ed.). Cambridge University Press.
- Shohaya, J. N., Madlazim, & Rahmawati, E. (2014). Model Kecepatan 1-D Gelombang P Dan Relokasi Hiposenter Gempa Bumi Di Bengkulu Menggunakan Metode Coupled Velocity Hipocenter. *Jurnal Fisika*, 3(2), 69–73.
- Sinaga, N. M. R., Lubis, E., & Sinaga, Y. K. (2019). Dampak Erupsi Gunung Sinabung Terhadap Produksi Dan Harga Cabai Merah (*Capsicum annum L.*) (Desa: Beganding, Kecamatan Simpang Empat, Kab. Karo). *Jurnal Darma Agung*, 27(2), 949–959.
- Sogen, S. S., Sianturi, H. L., Tanesib, J. L., & Shyabana, D. K. (2017). Analisis Spektral dan Penentuan Hiposenter Gempa Gunung Lewotobi dan Egon Serta Kondisi Seismotektonik Daerah Sekitarnya. *Jurnal Fisika*, 2(1), 29–36.
- Sunarjo, Gunawan, M. T., & Pribadi, S. (2012). *Gempabumi Edisi Populer* (2nd ed.). Badan Meteorologi Klimatologi dan Geofisika.
- Syahra, V., Maryanto, S., & Triastuty, H. (2014). Analisis Spektral dan Distribusi Hiposenter Gempa Vulkanik A dan Vulkanik B Gunungapi Ijen Jawa Timur. *Physics Student Journal*, 2(1).
- Togatorop, P. M., Subiyanto, S., & Wijaya, A. P. (2016). Pemetaan Potensi Bencana Aliran Lava Gunung Sinabung Menggunakan Citra Aster GDEM. *Jurnal Geodesi Undip*, 5(2), 87–96.
- Utari, E. L. (2019). Sistem Identifikasi Pola Gelombang Seismik Untuk Mengetahui Aktifitas Gunung Merapi. *Seminar Nasional UNRIYO*.

- Wahyuni, A., Ahmad, N. F., Astuti, S., & Fisika, J. (2017). Analisis Besar Kecepatan Gelombang Primer Pada Stasiun BMKG Wilayah IV Makassar. *Jurnal Fisika Dan Terapannya*, 4(2), 169–173.
- Wanandi, A. C., Sutanto, H., & Himawan, R. (2018). Kaji Eksperimental Prediksi Ketebalan Nitridasi Pada Baja Skd 61 Menggunakan Metode Gelombang Ultrasonik. *SIGMA EPSILON*, 22(1), 8–16. <https://doi.org/10.17146/sigma.2018.22.1.4319>
- Wassermann, J. (2002). *Volcano Seismology* (pp. 1–67). <https://doi.org/10.2312/GFZ.NMSOP-2>
- Wuryani, S. D., Maryanto, S., & Nadhir, A. (2014). Identifikasi Kantung Magma Gunung Bromo Berdasarkan Analisa Sebaran Hiposenter Gempa VTA. *Physics Student Journal*, 2(1), 2–5.
- Zobin, V. (2012). *Introduction to volcanic seismology* (2nd ed.). Elsevier.

L

A

M

P

I

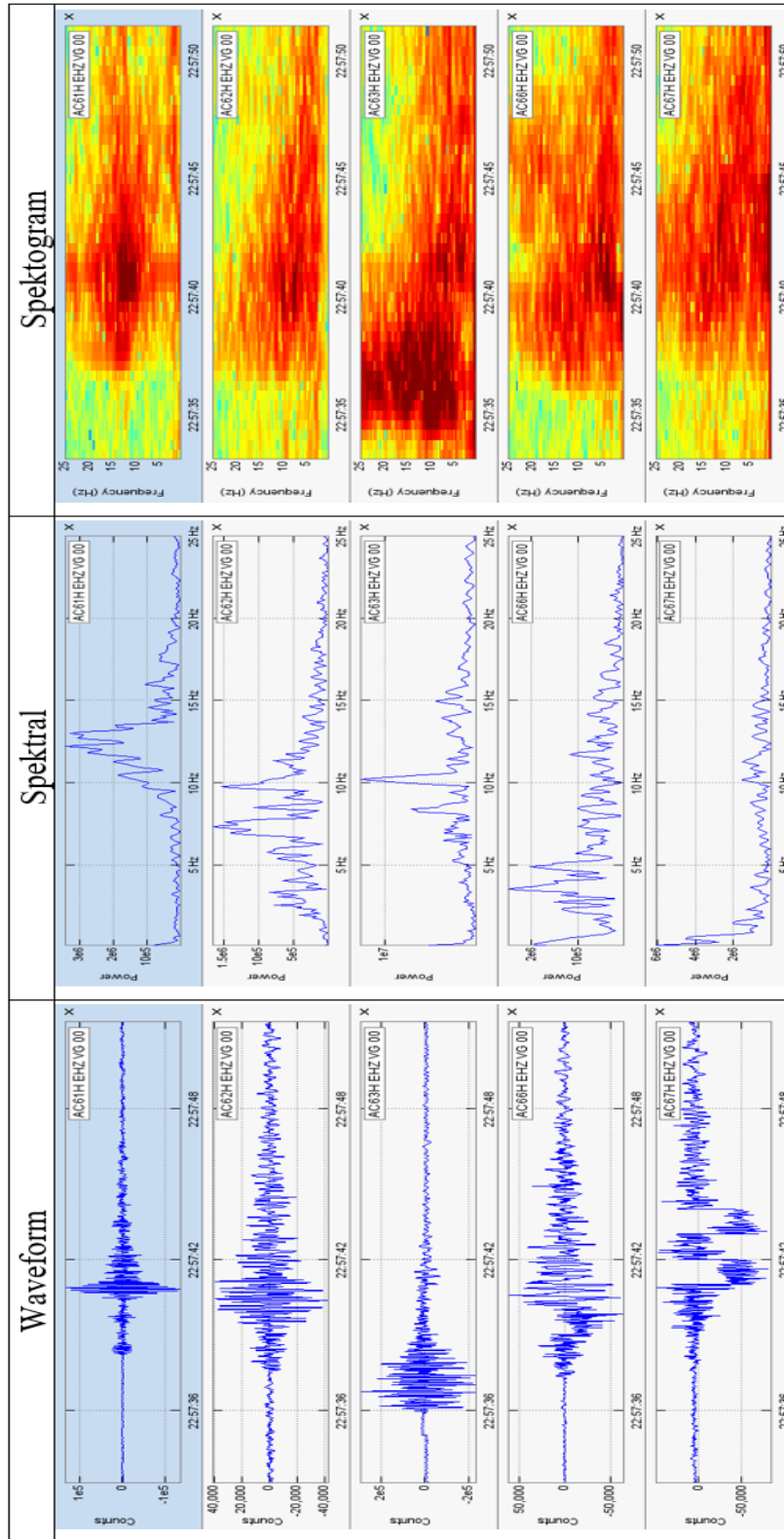
R

A

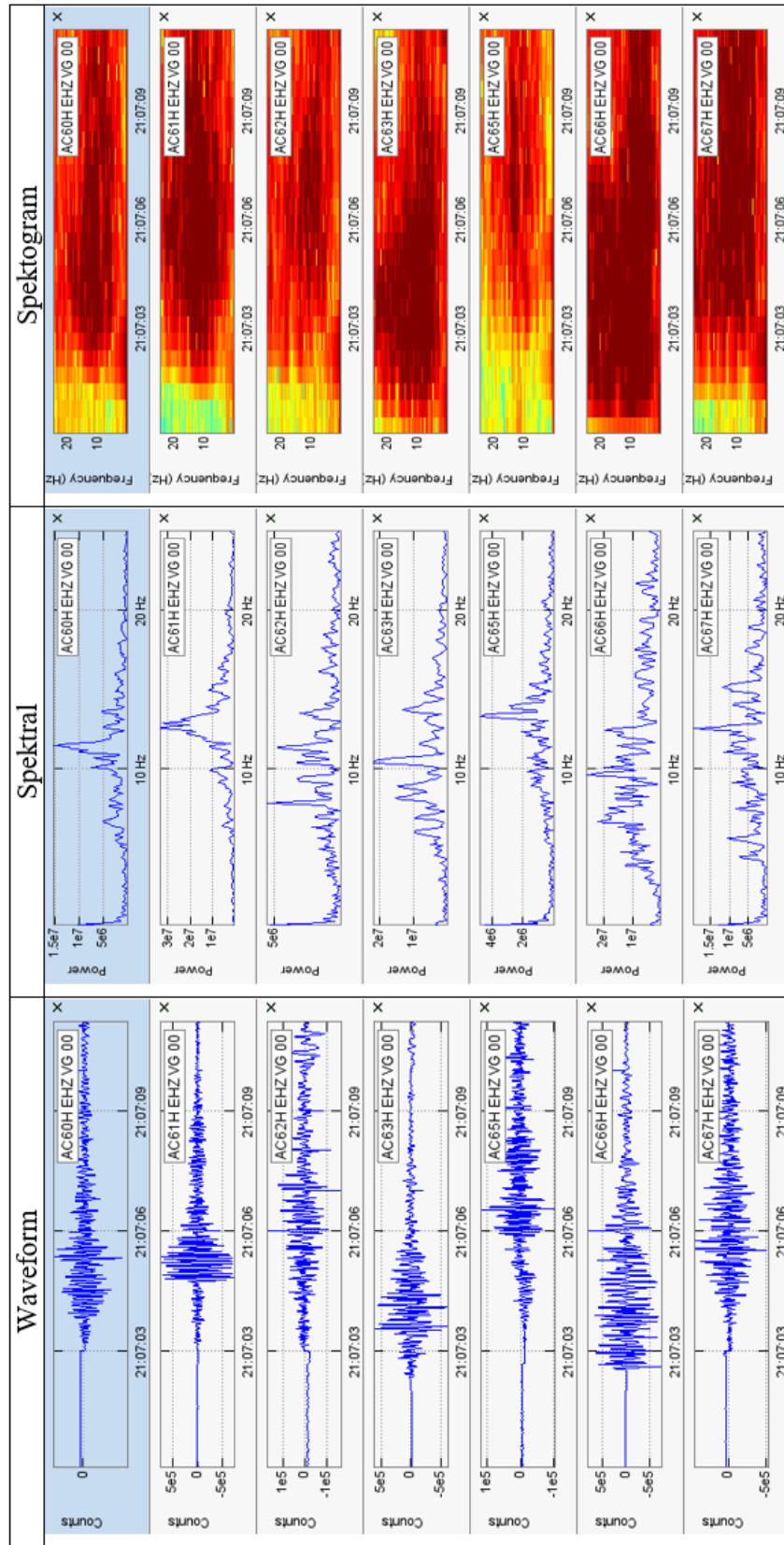
N

Lampiran 1 : Hasil Klasifikasi Gempa Gunung Sinabung

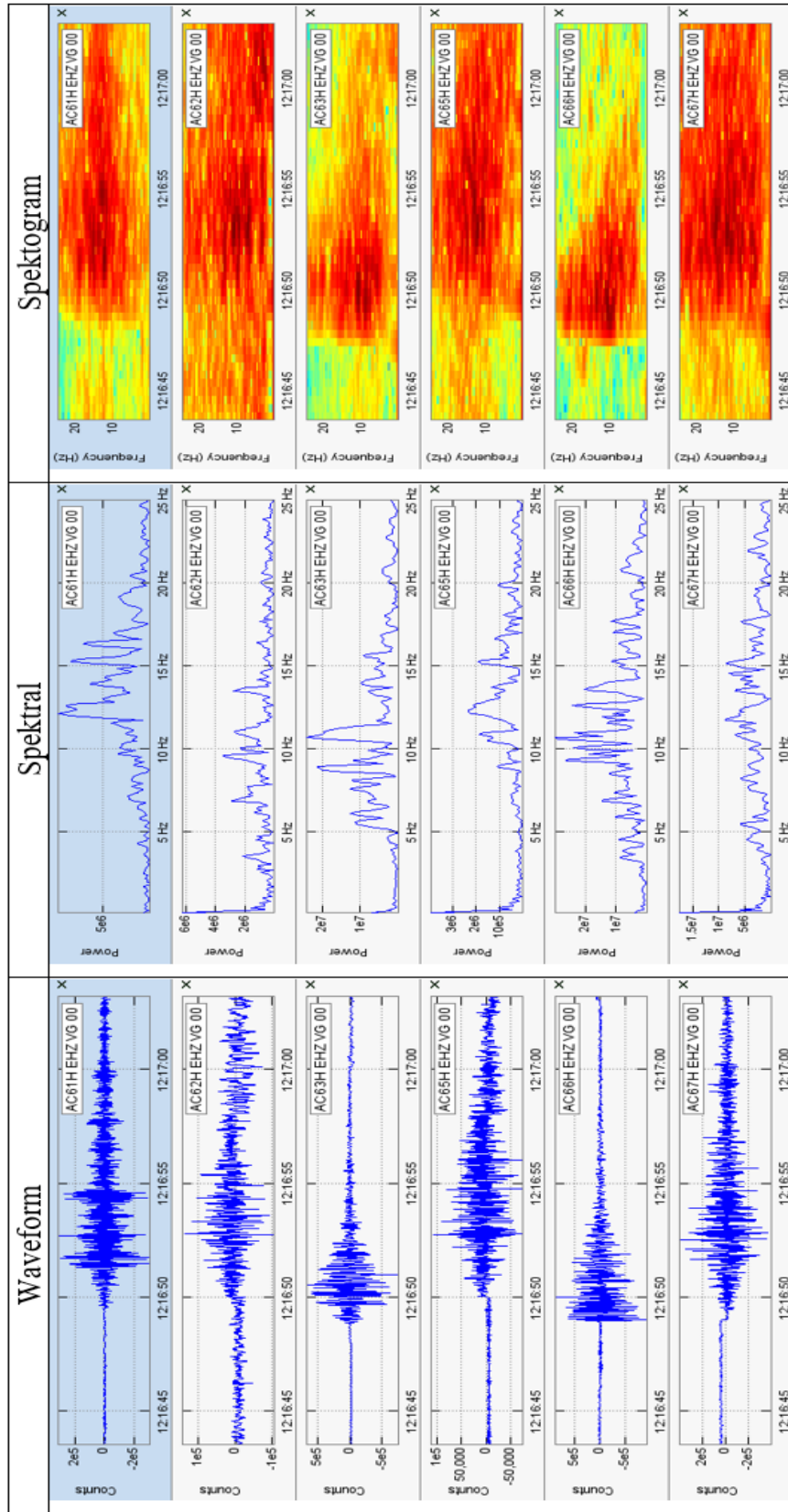
2009072257 – Gempa Vulkanik Dalam (VTA)



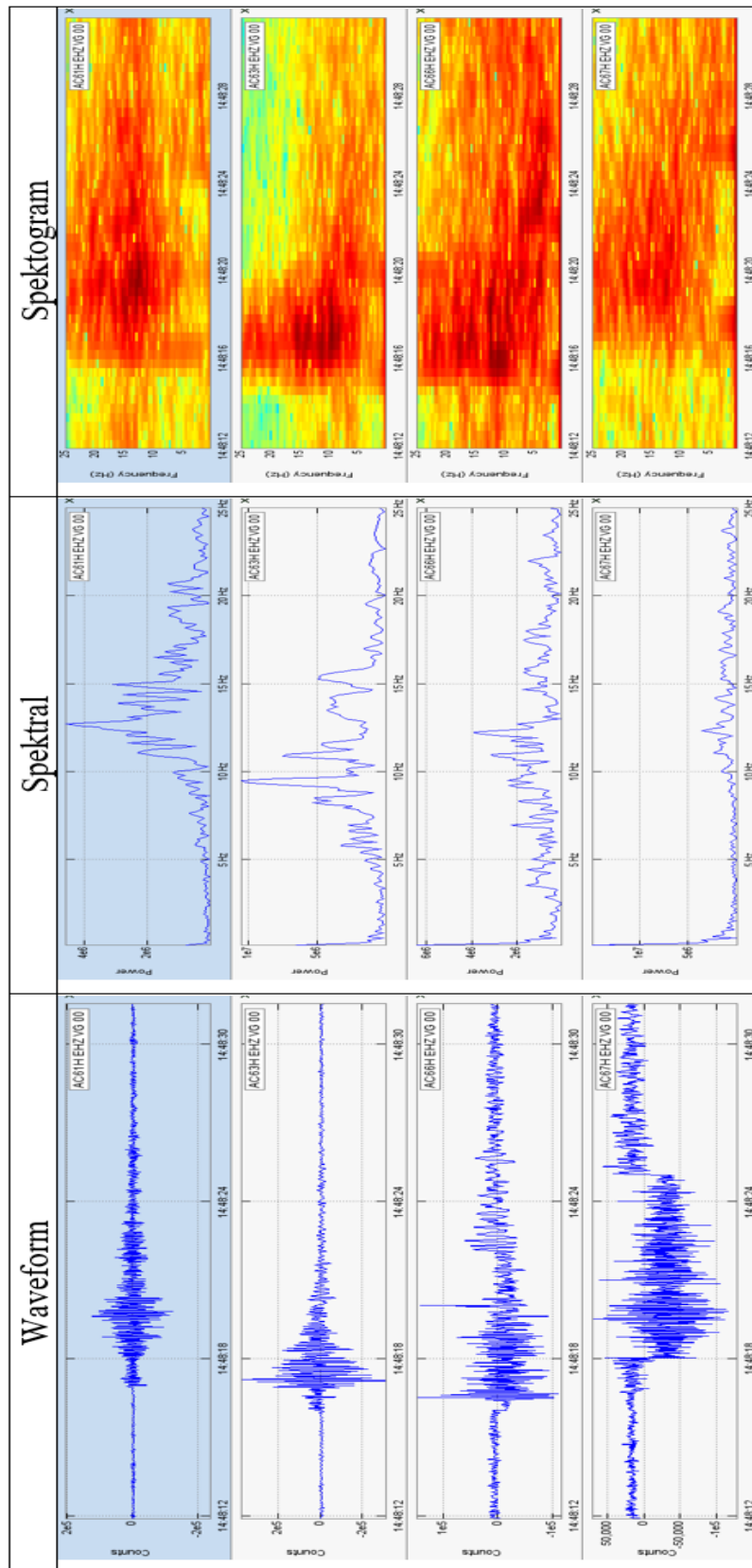
2009082107 – Gempa Vulkanik Dalam (VTA)



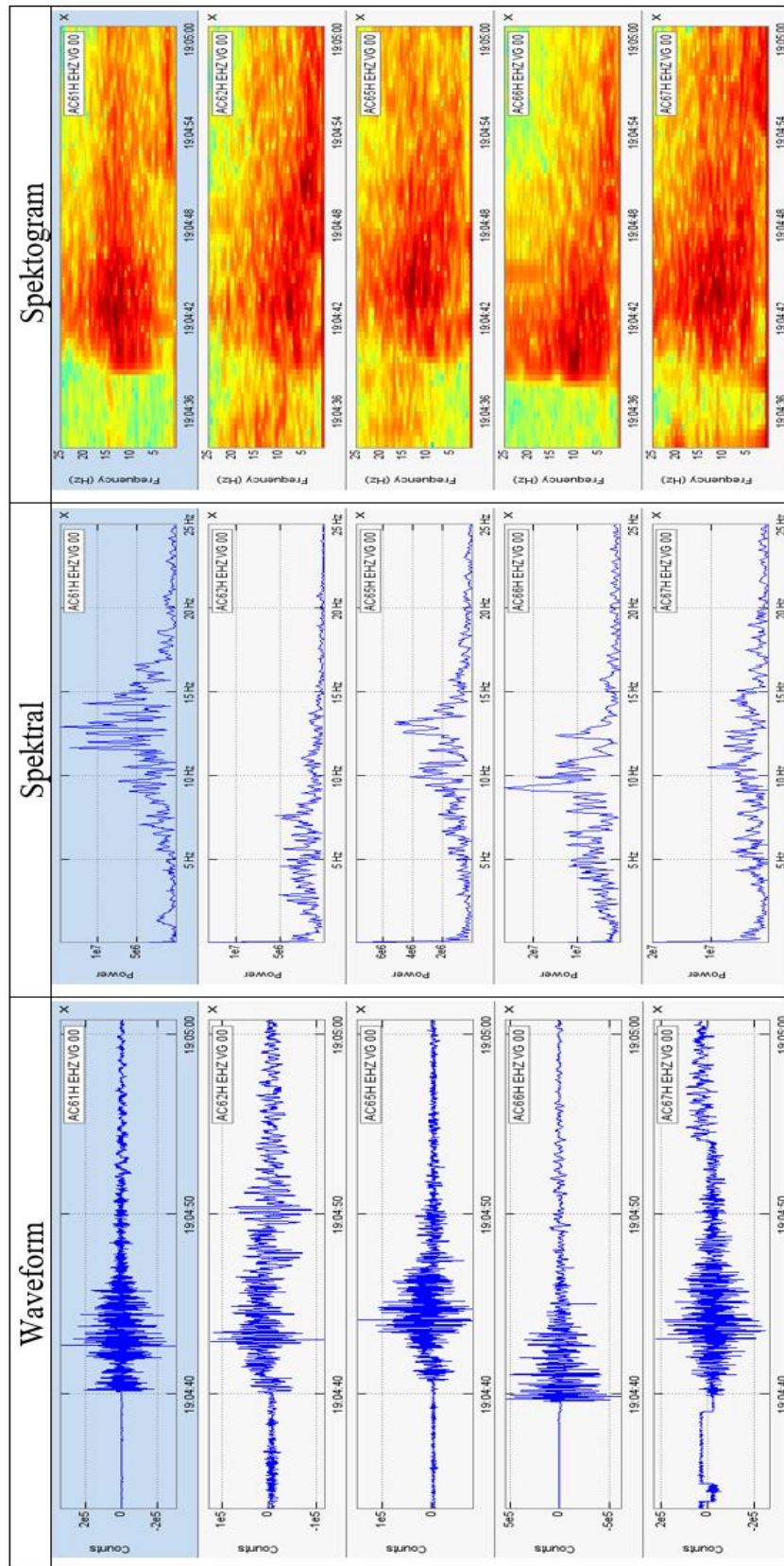
2009191216 – Gempa Vulkanik Dalam (VTA)



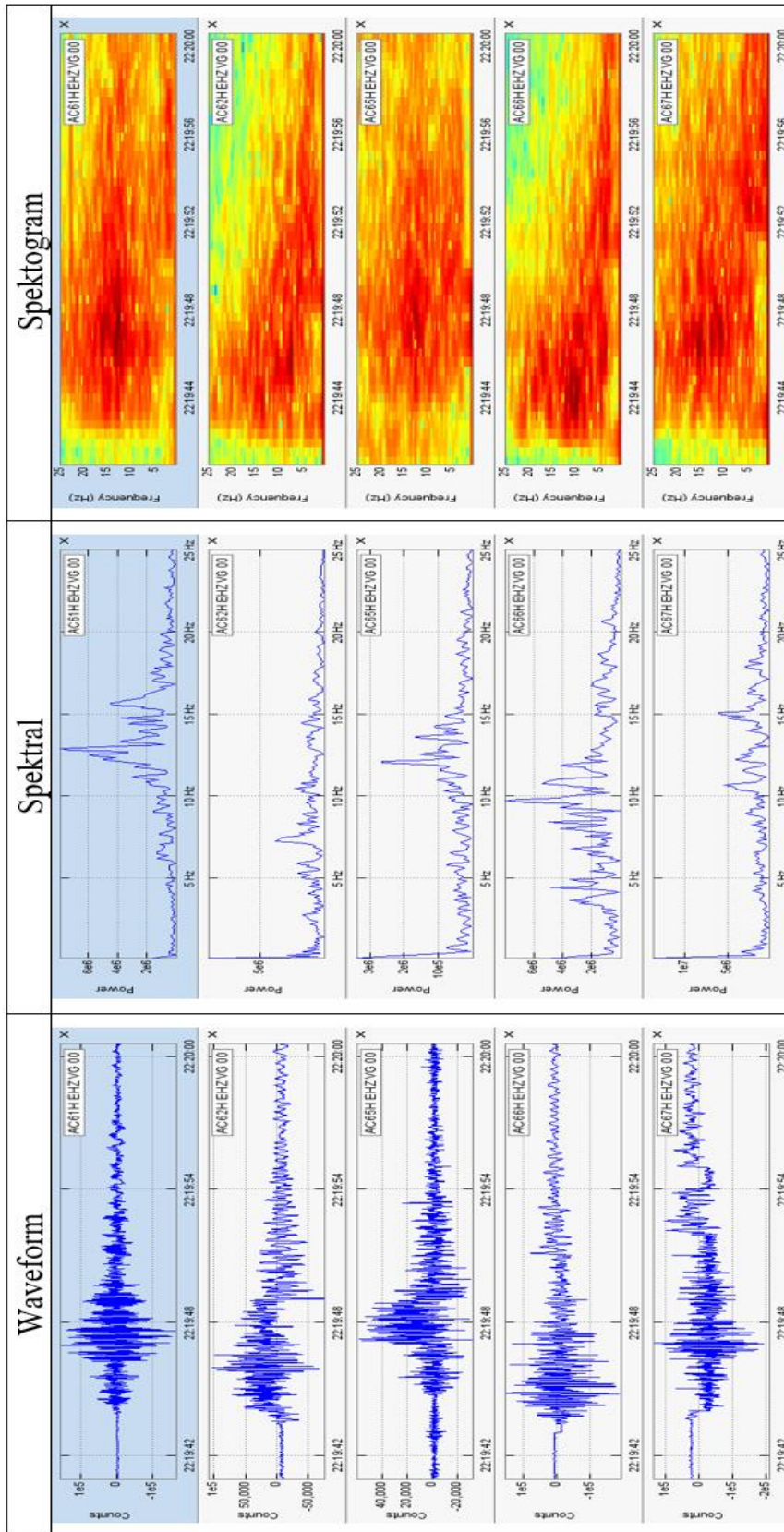
2009201448 – Gempa Vulkanik Dalam (VTA)



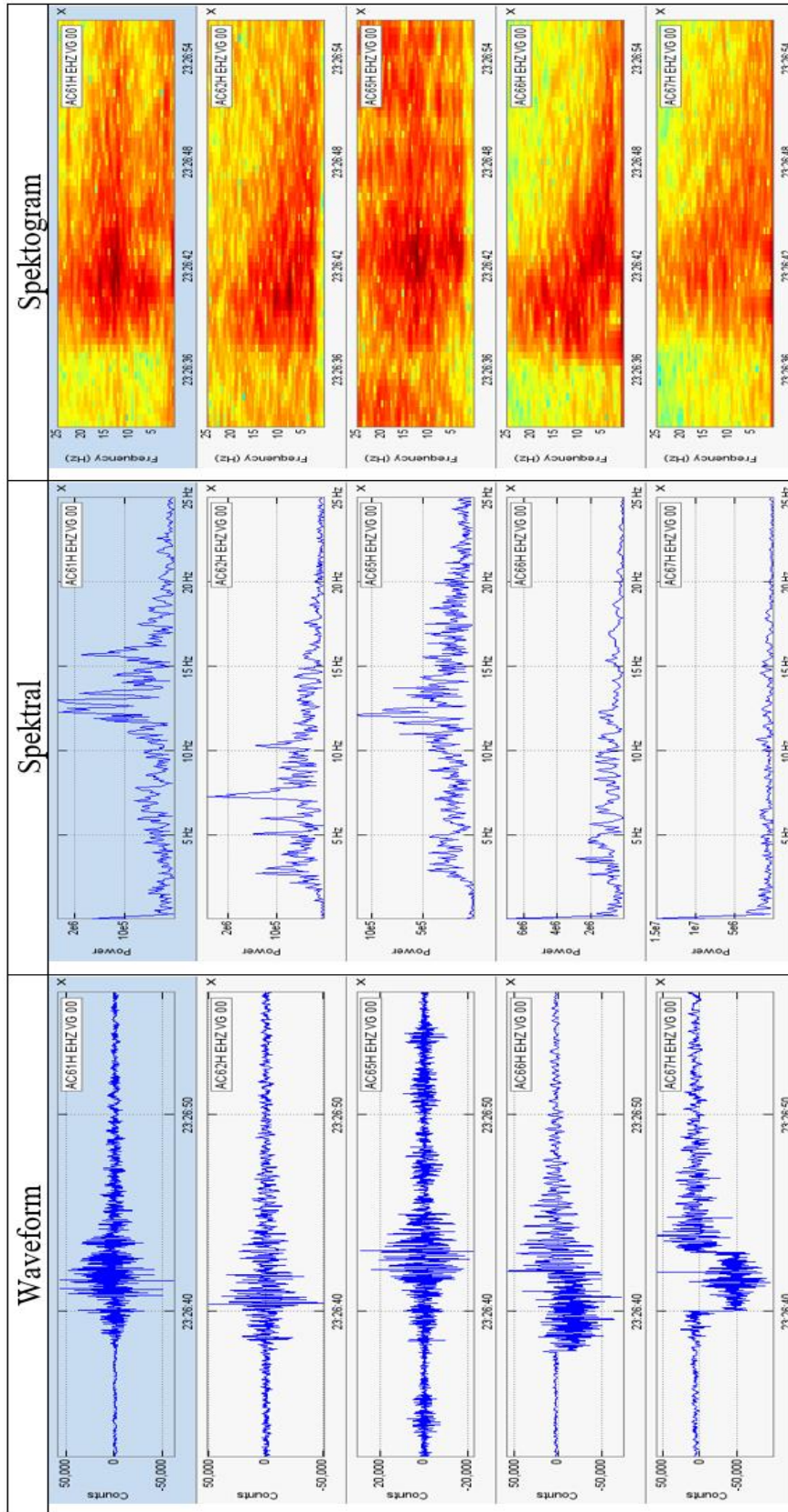
2009271904 – Gempa Vulkanik Dangkal (VTB)



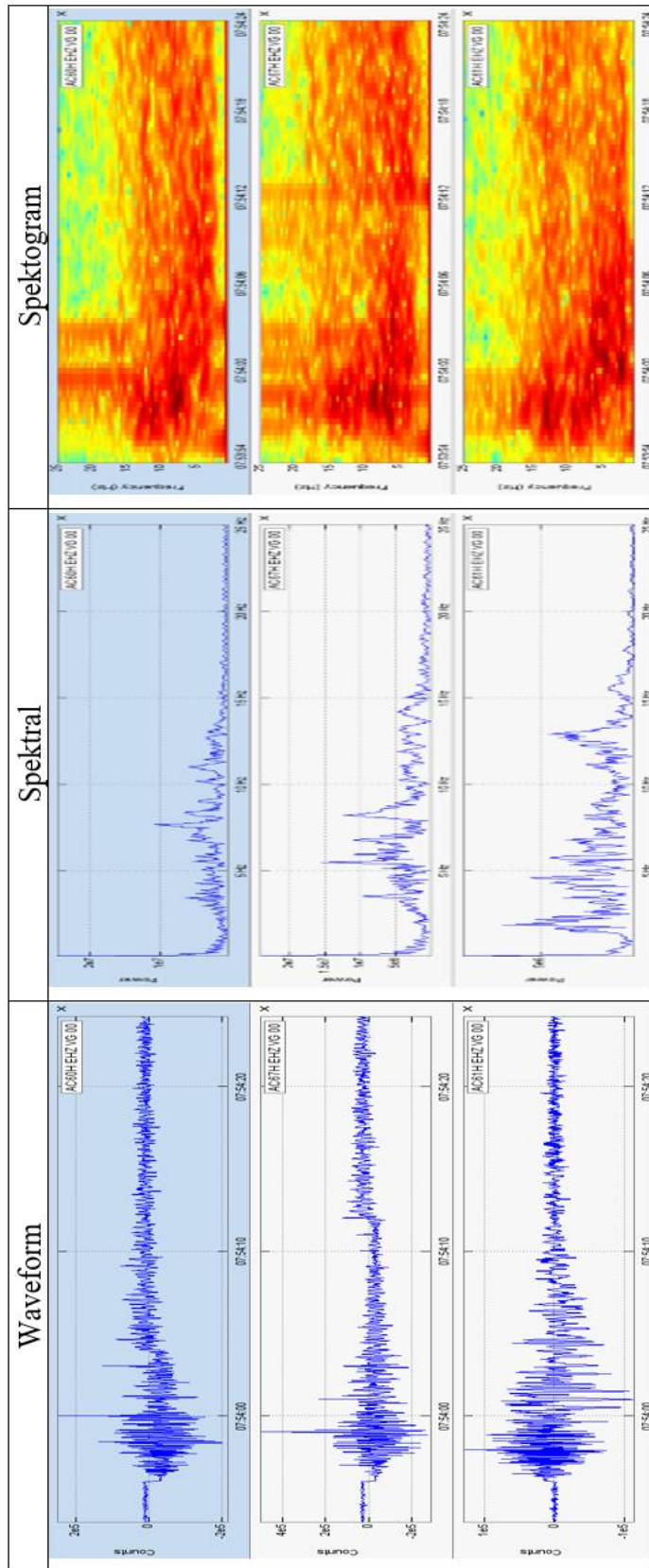
2009282219 – Gempa Vulkanik Dangkal (VTB)

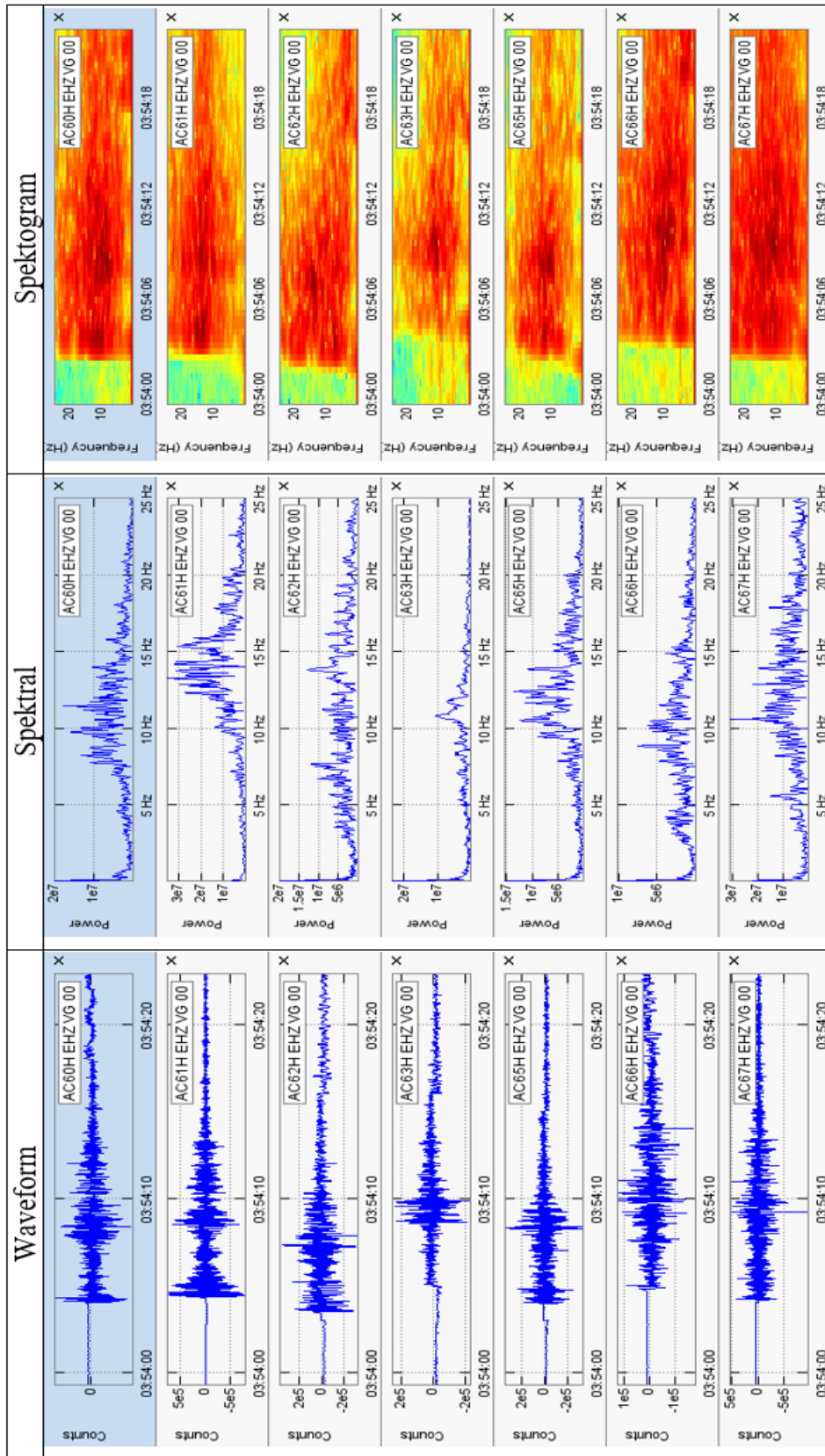


2009282326 – Gempa Vulkanik Dangkal (VTB)

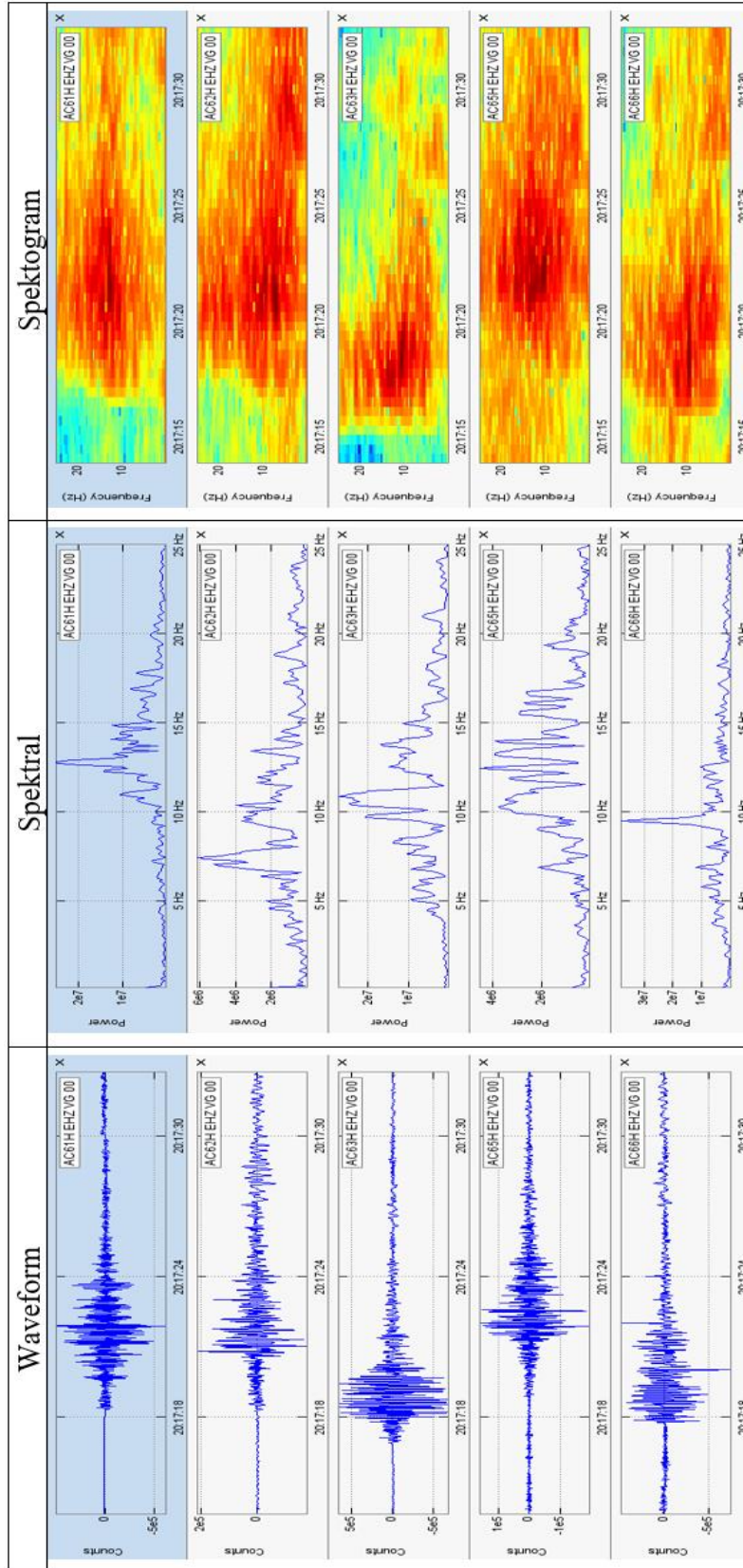


2010300754 - Gempa Vulkanik Dangkal (VTB)

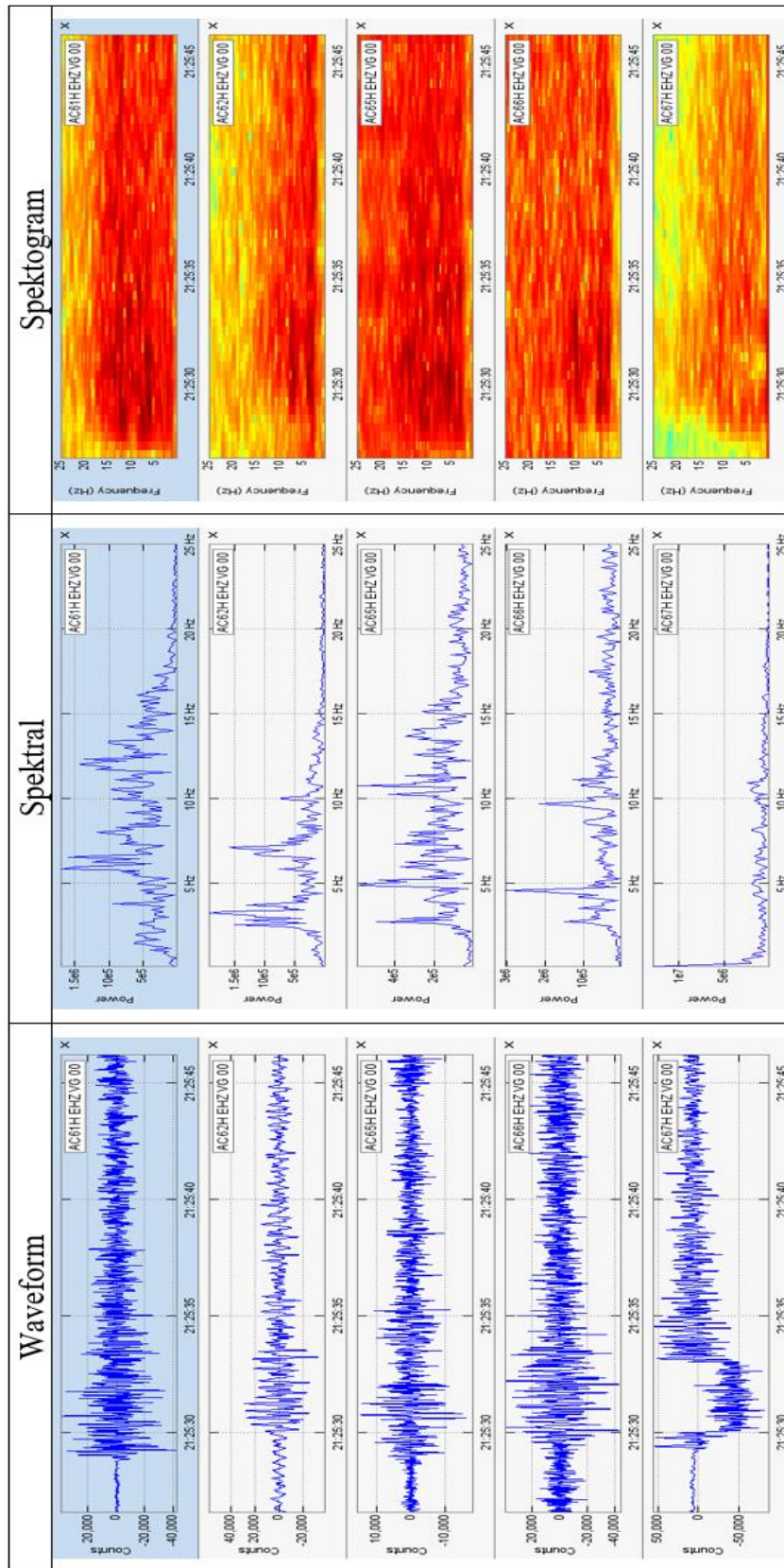




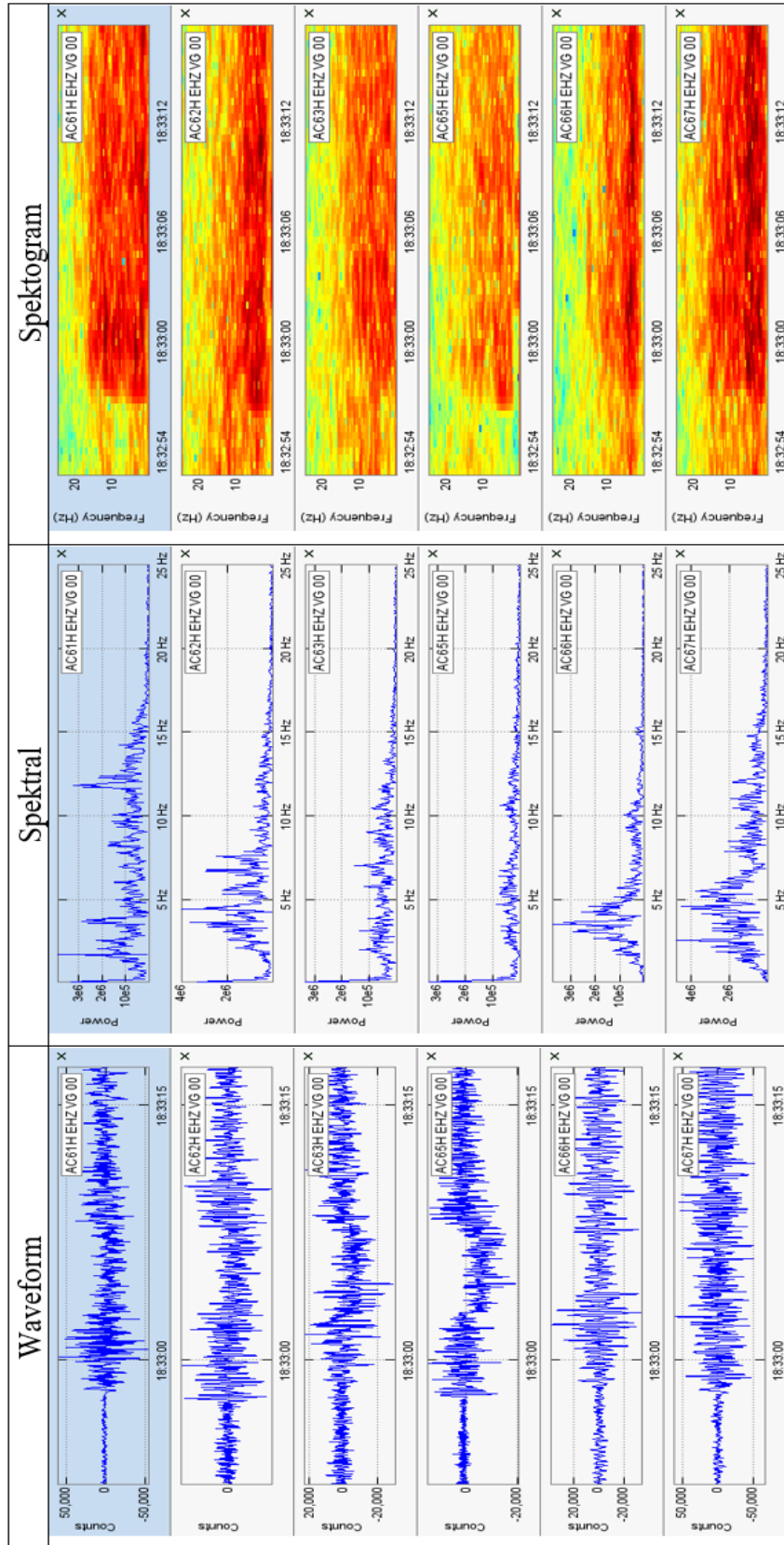
2011052017 - Gempa Vulkanik Dalam (VTA)

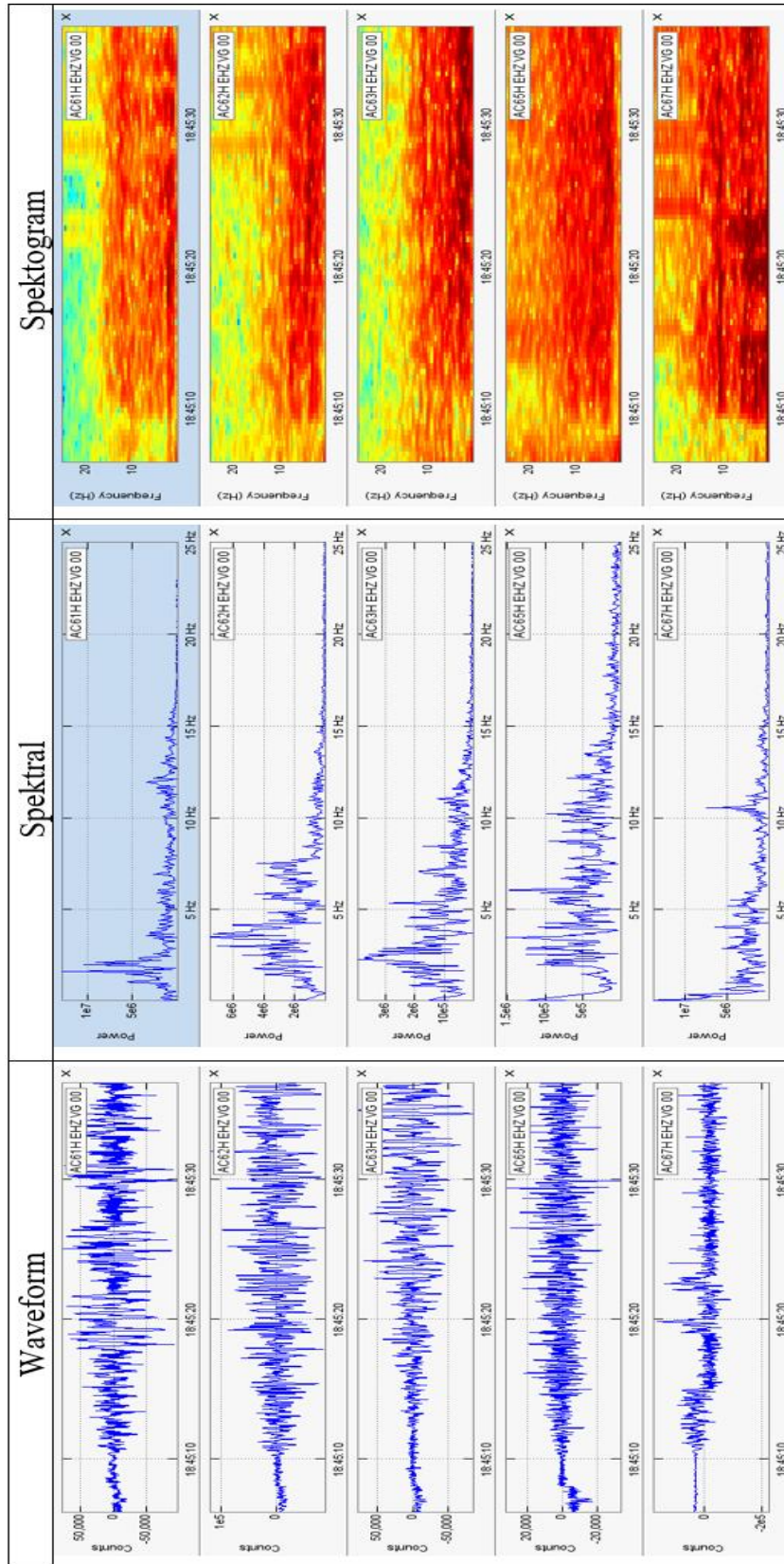


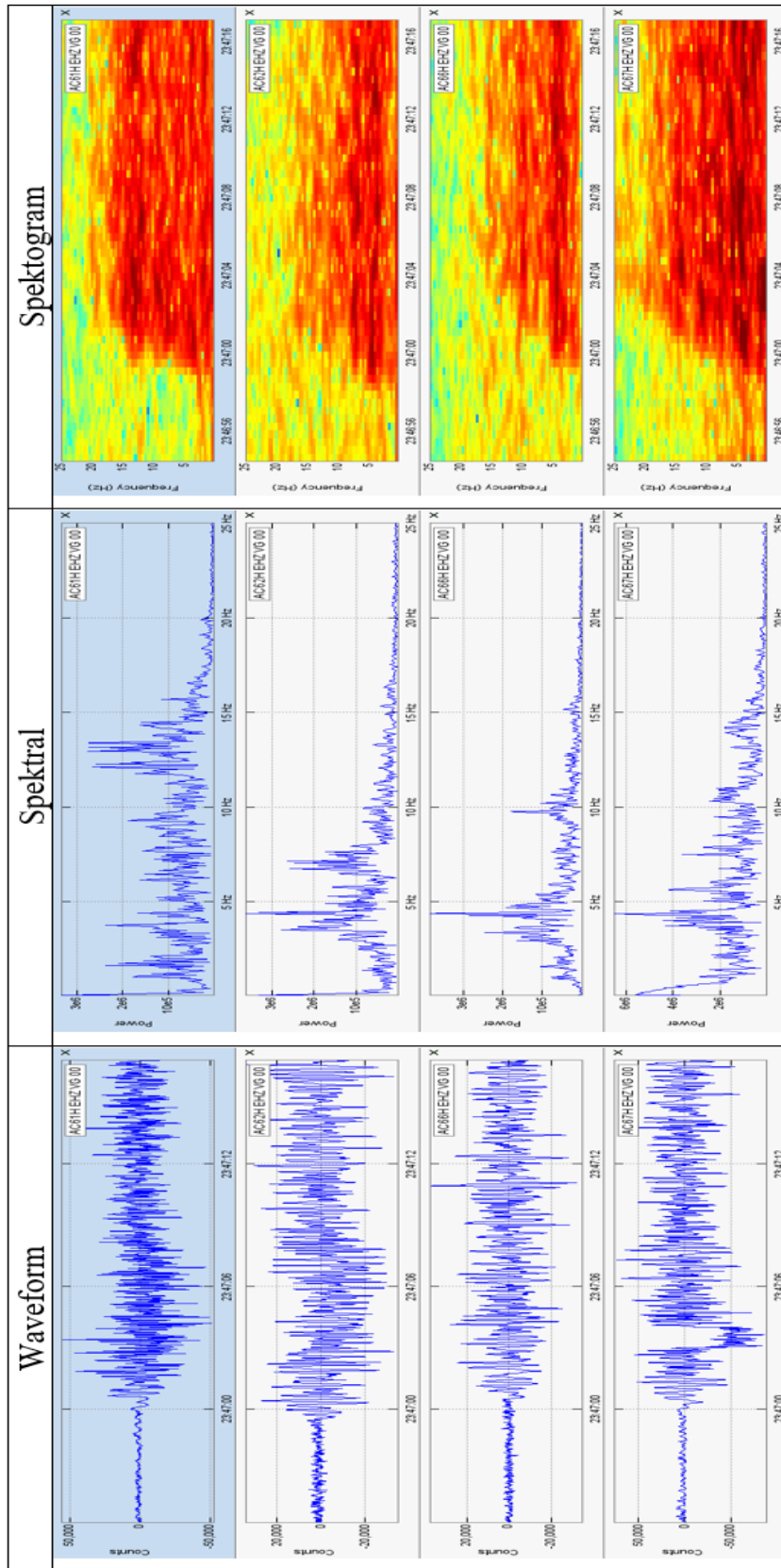
2009032125 – Gempa Hembusan



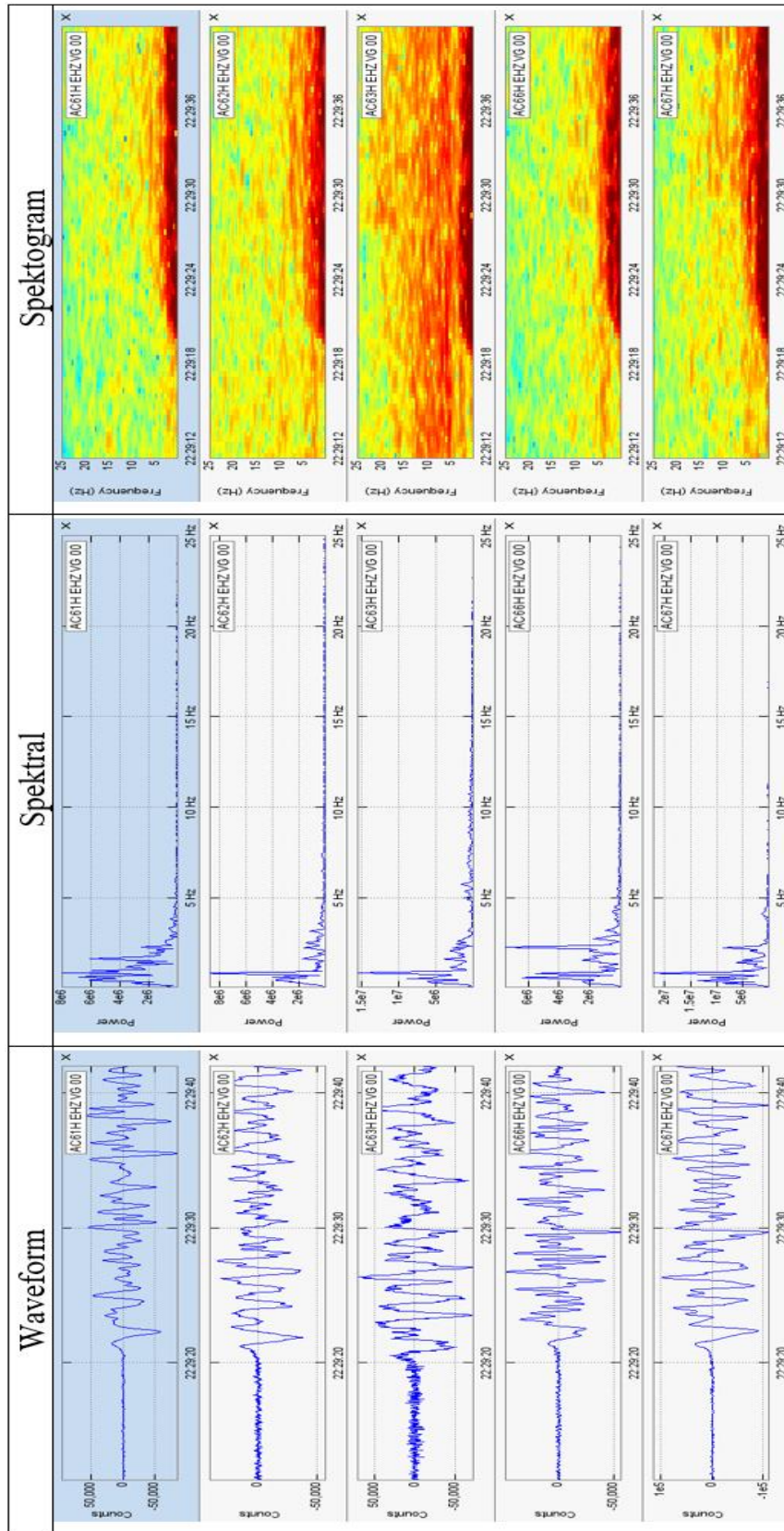
2009041833 – Gempa Guguran



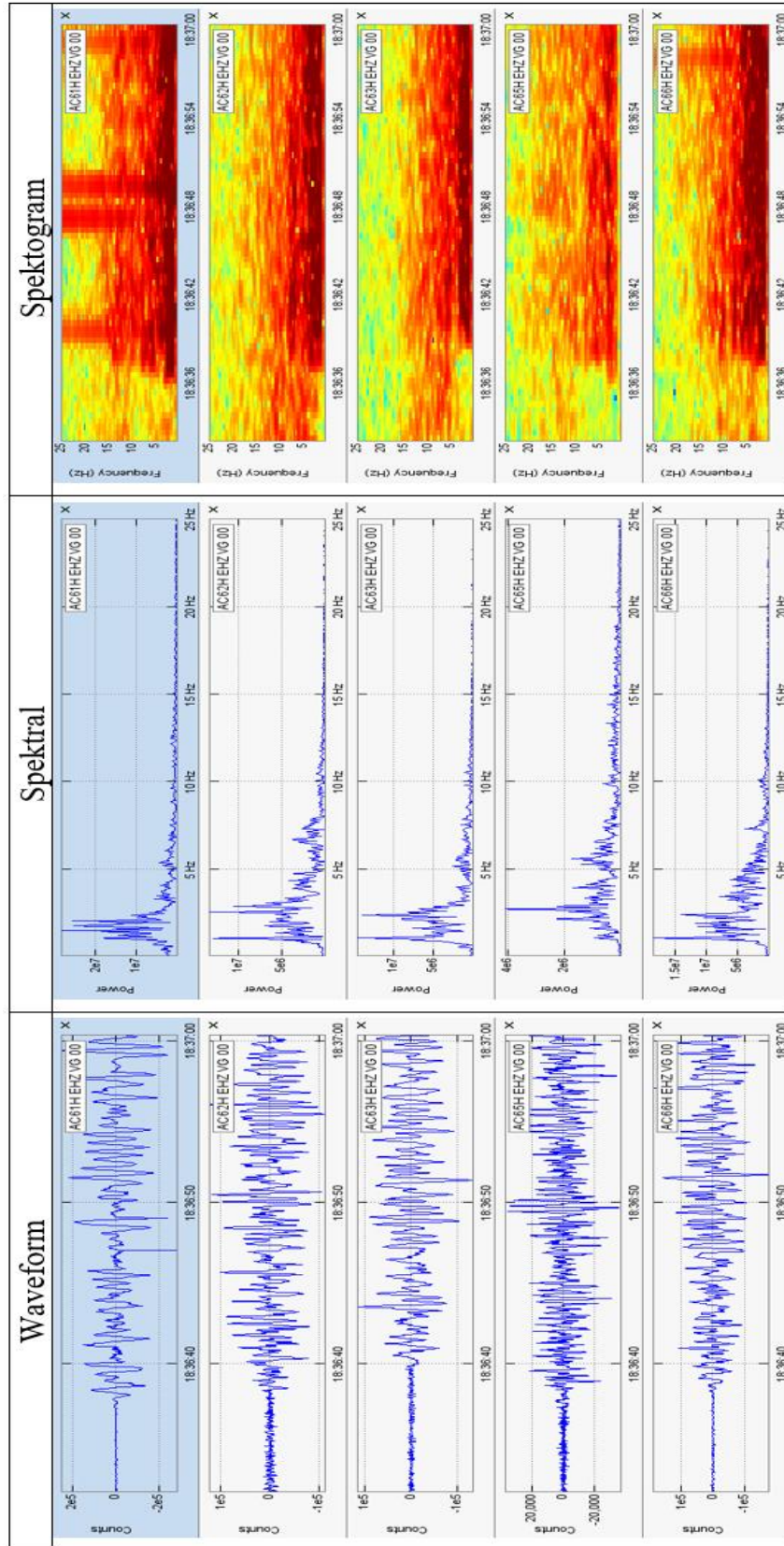




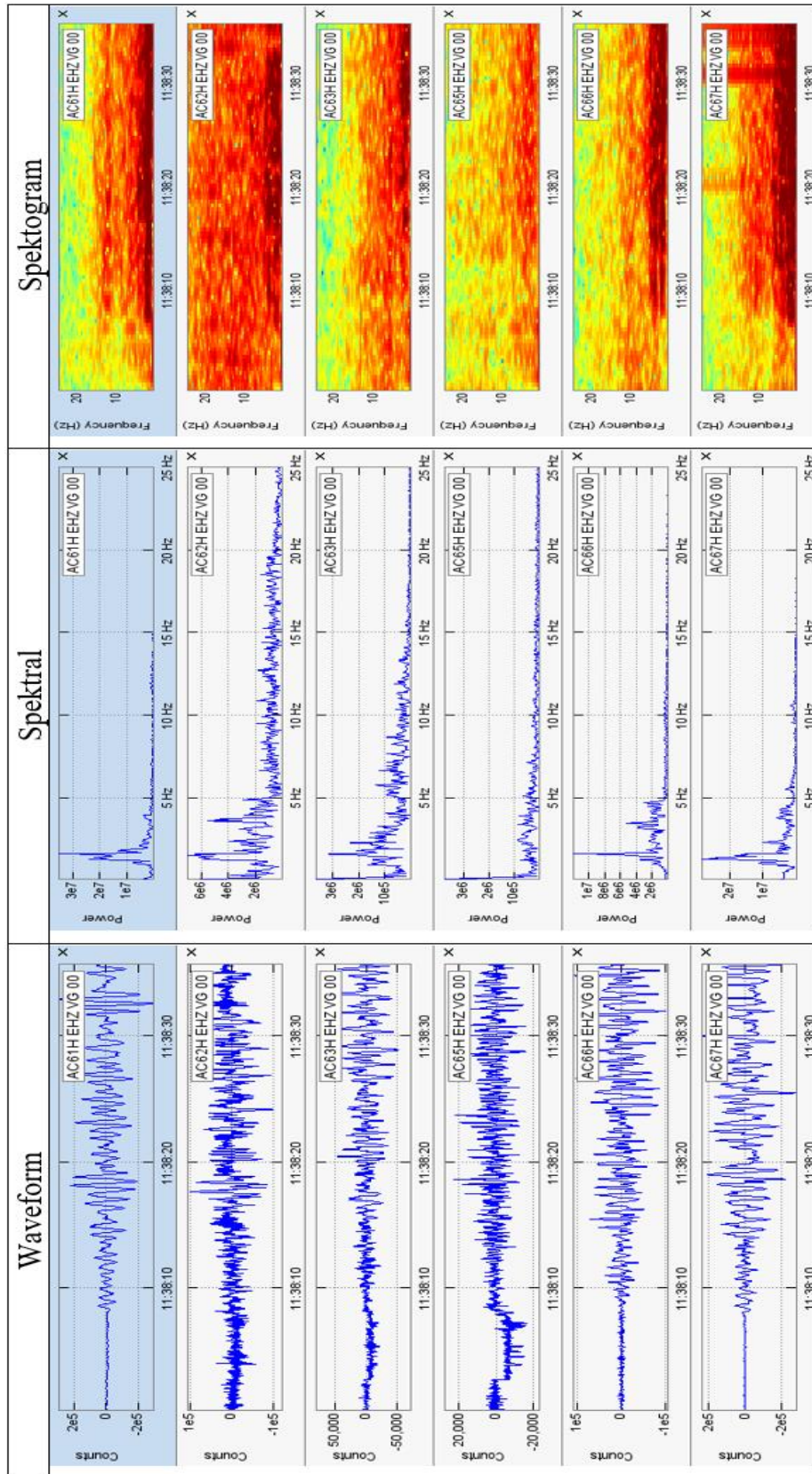
2009062229 – Gempa Low Frequency



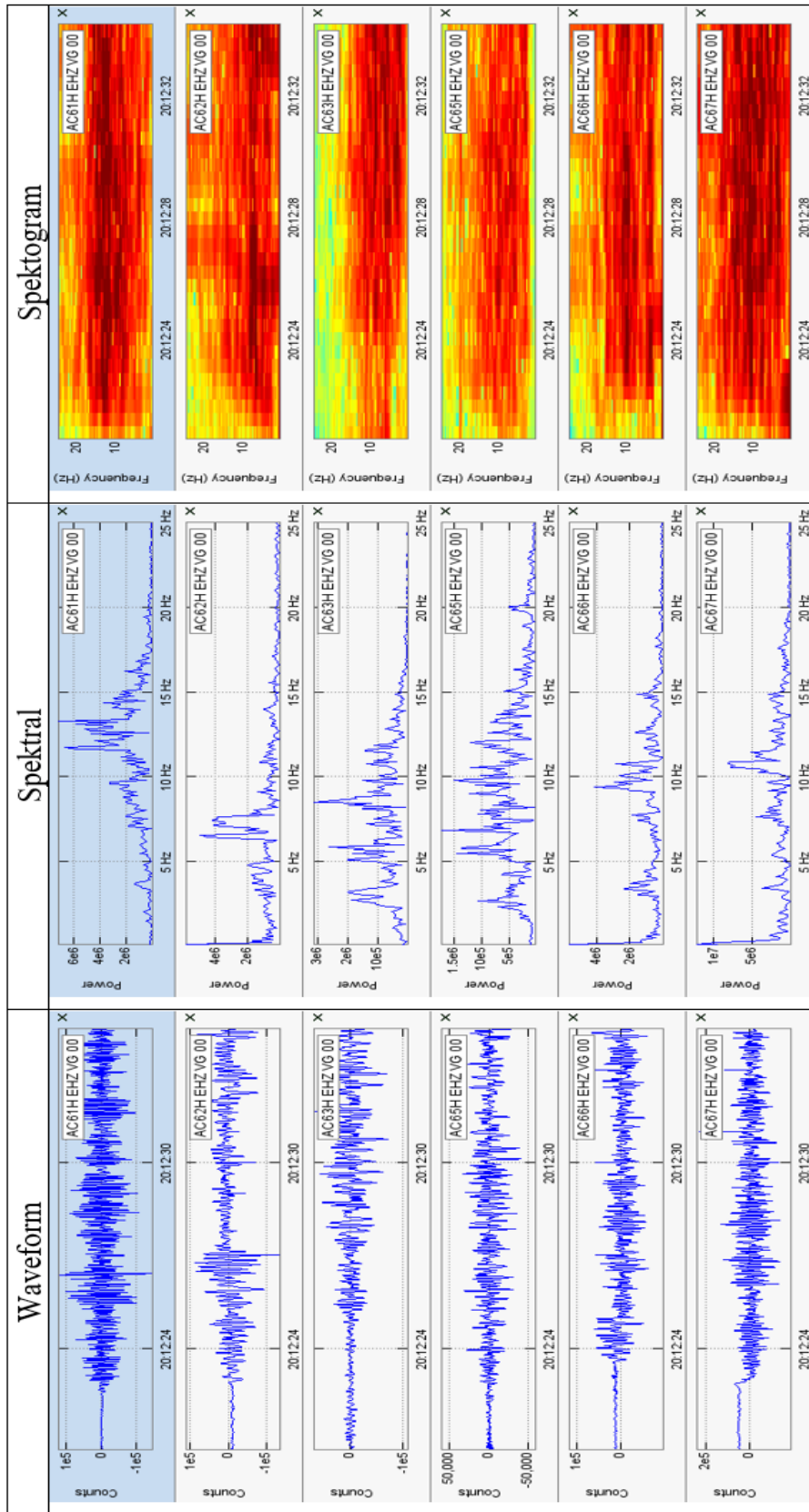
2009071836 - Gempa Low Frequency

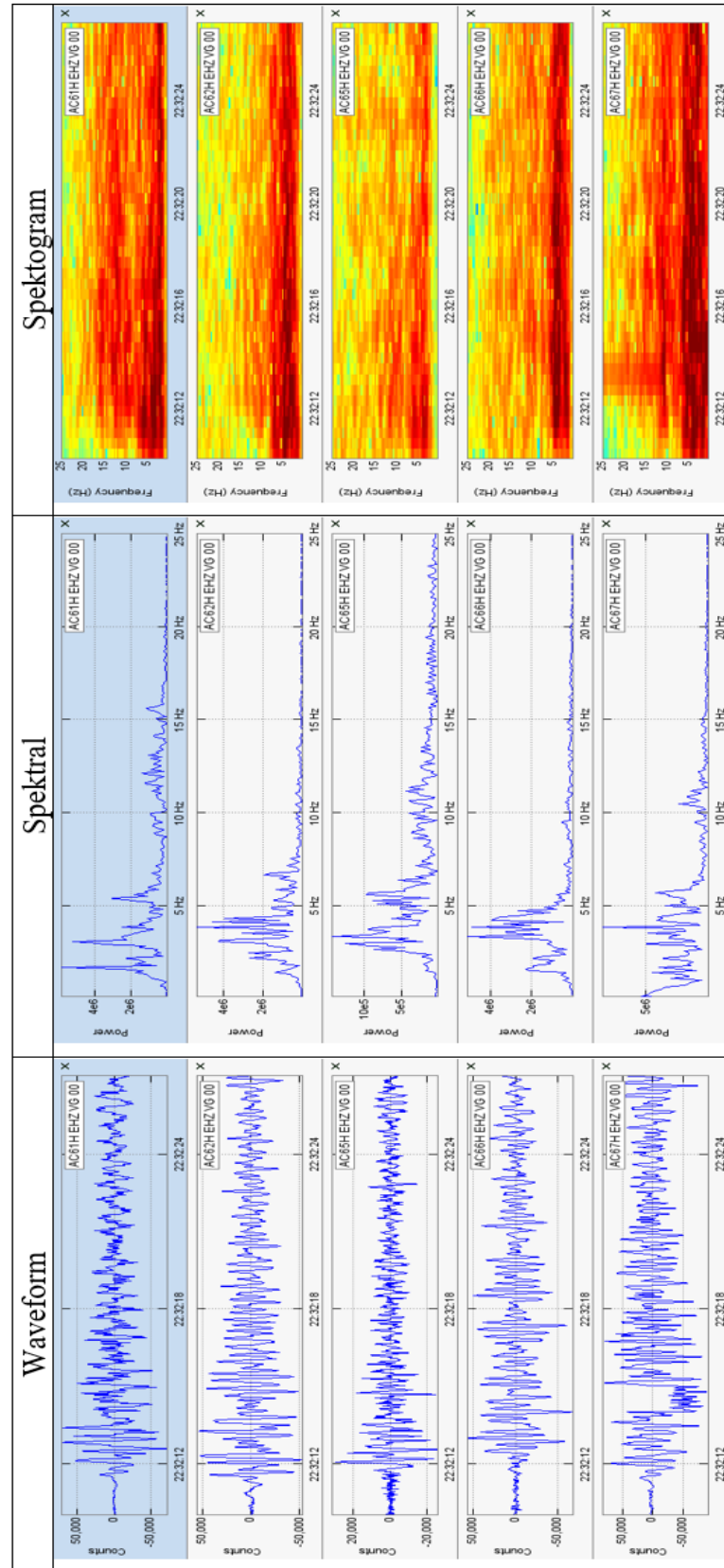


2009081138 – Gempa Low Frequency

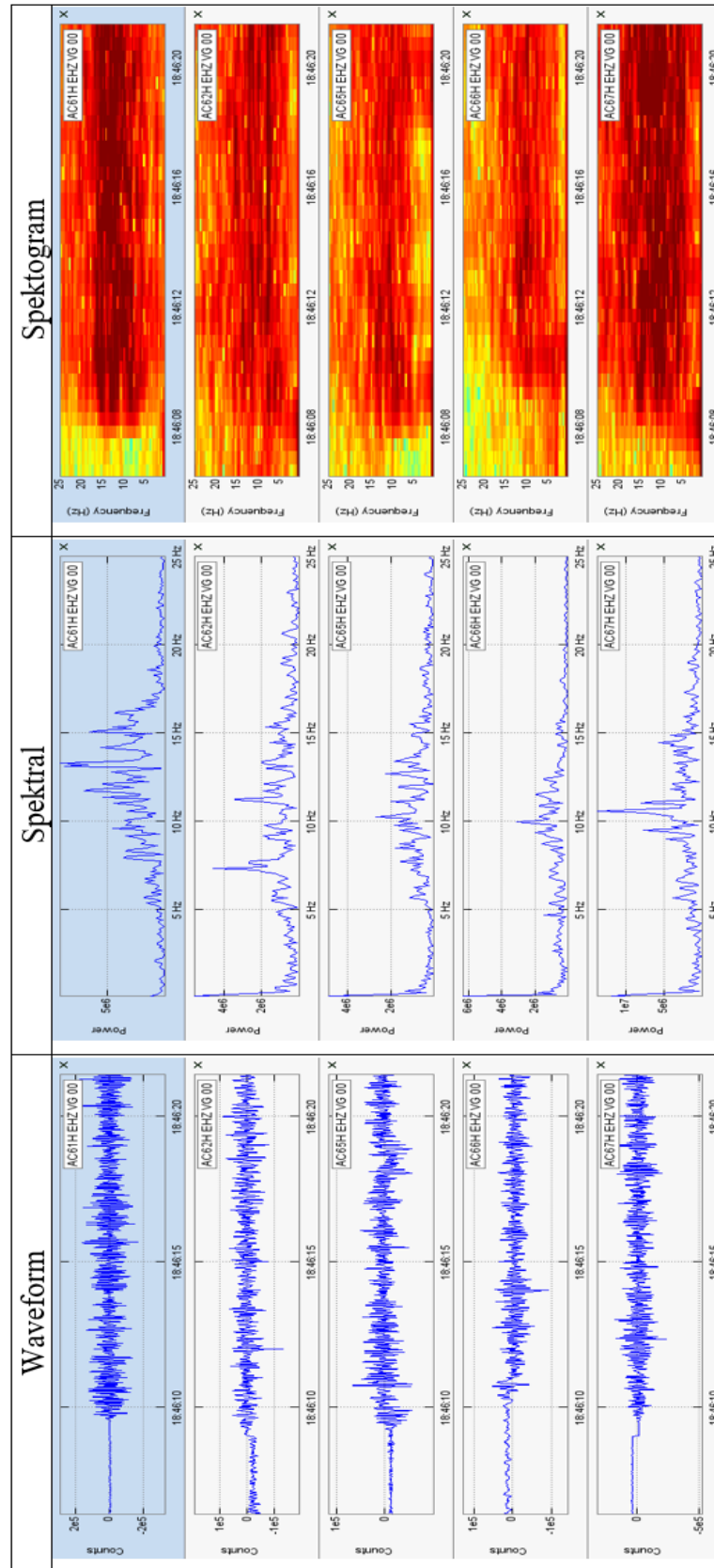


2009092012 – Gempa Hembusan

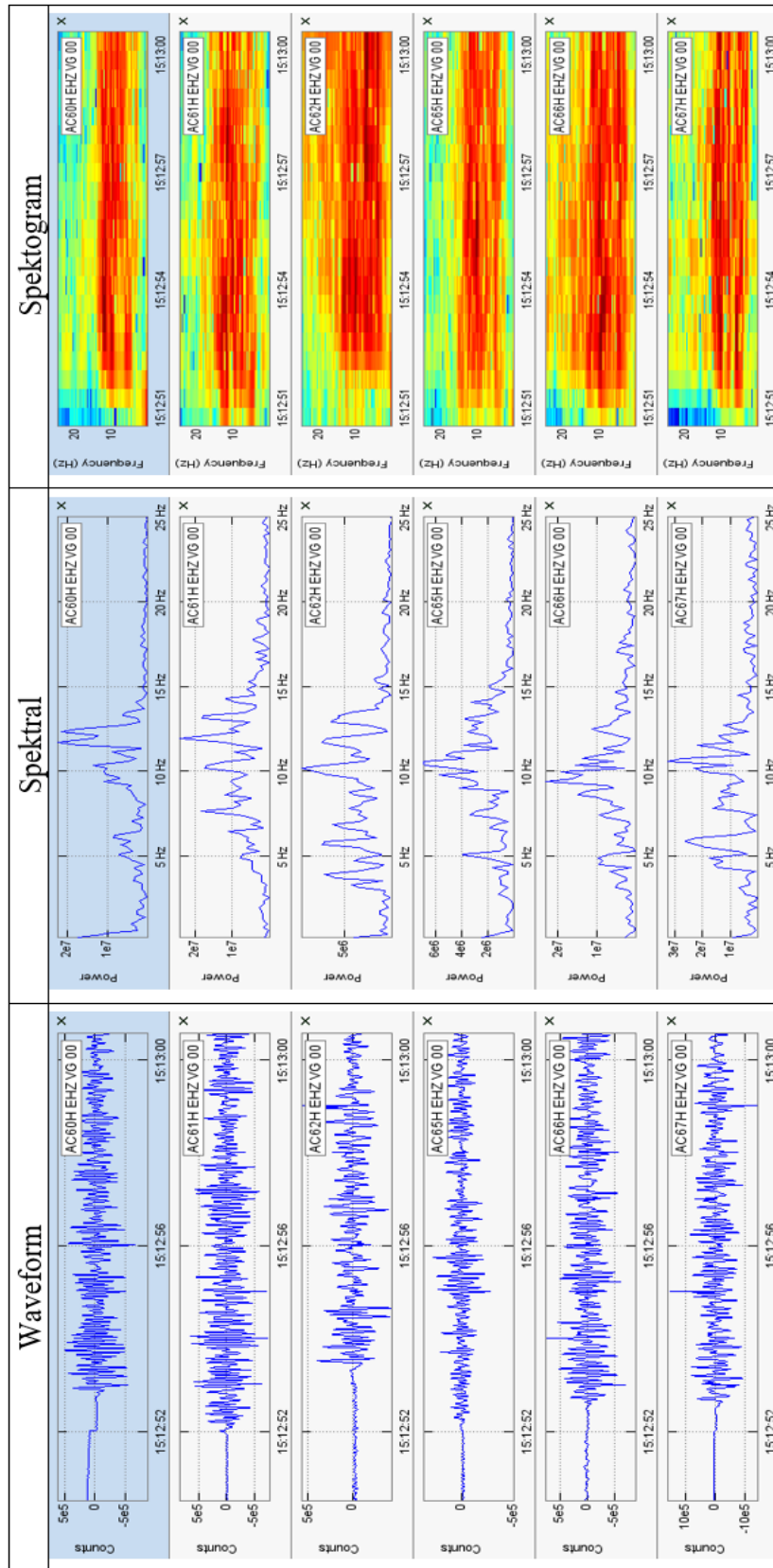


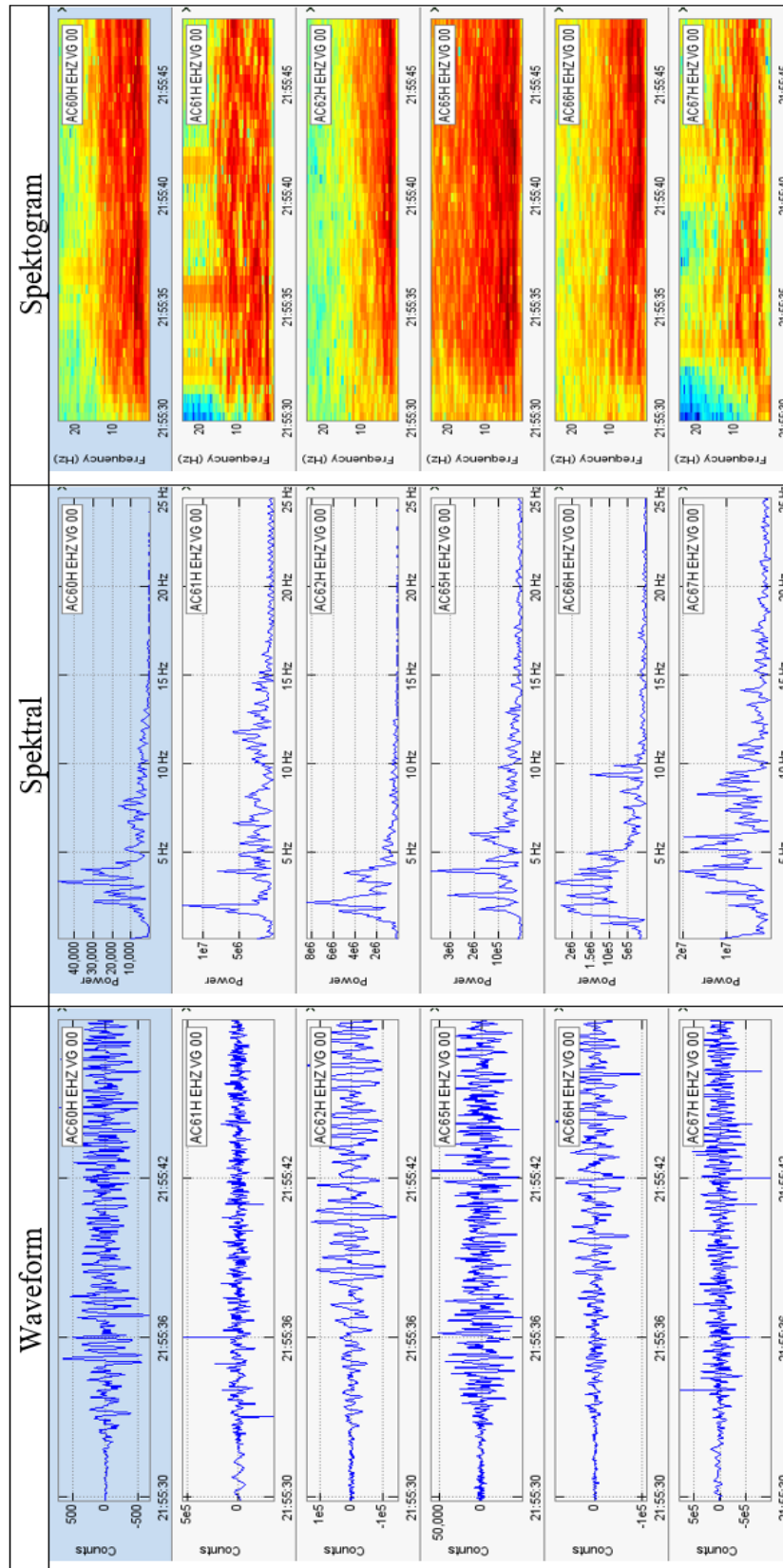


2009271846 – Gempa Hembusan

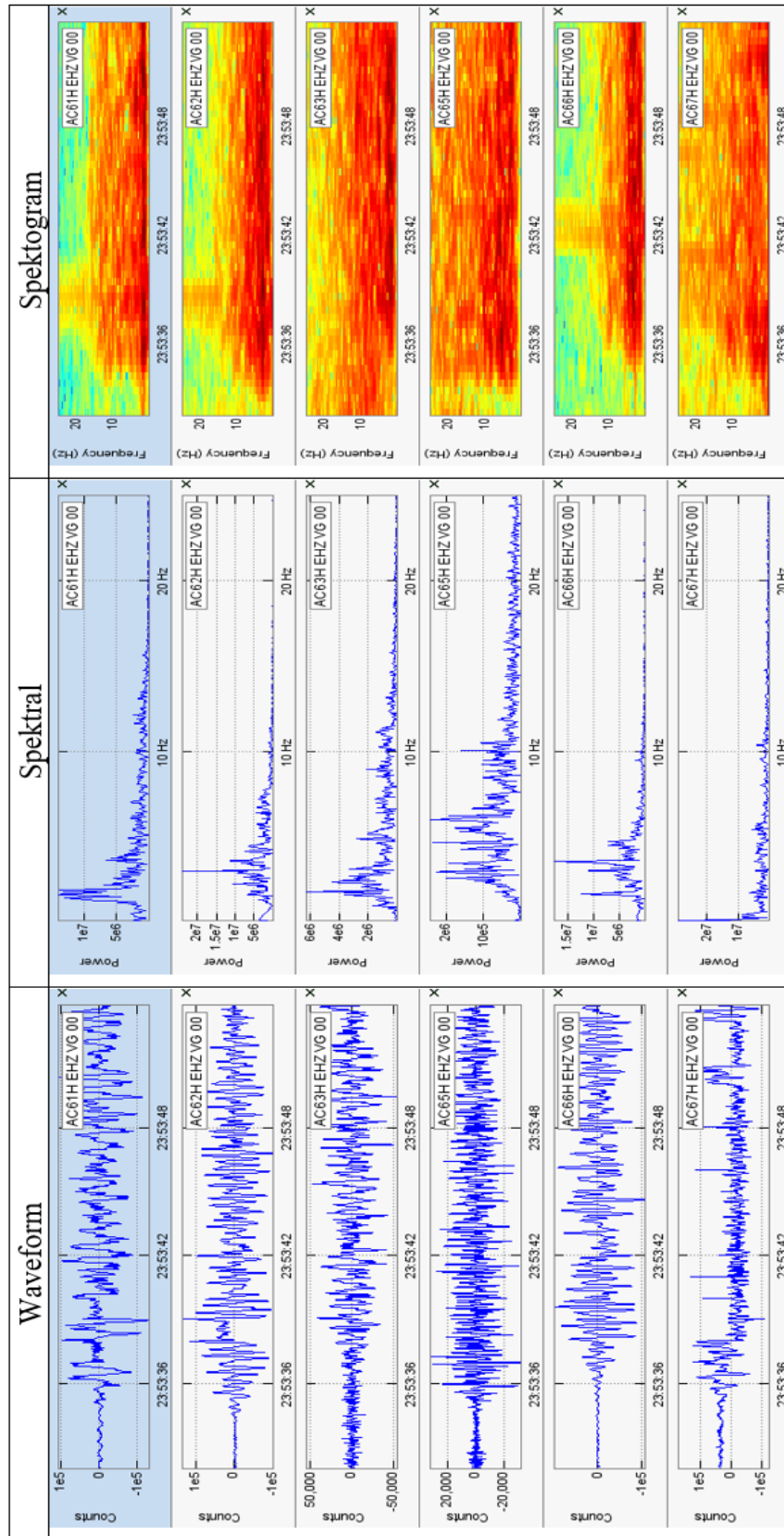


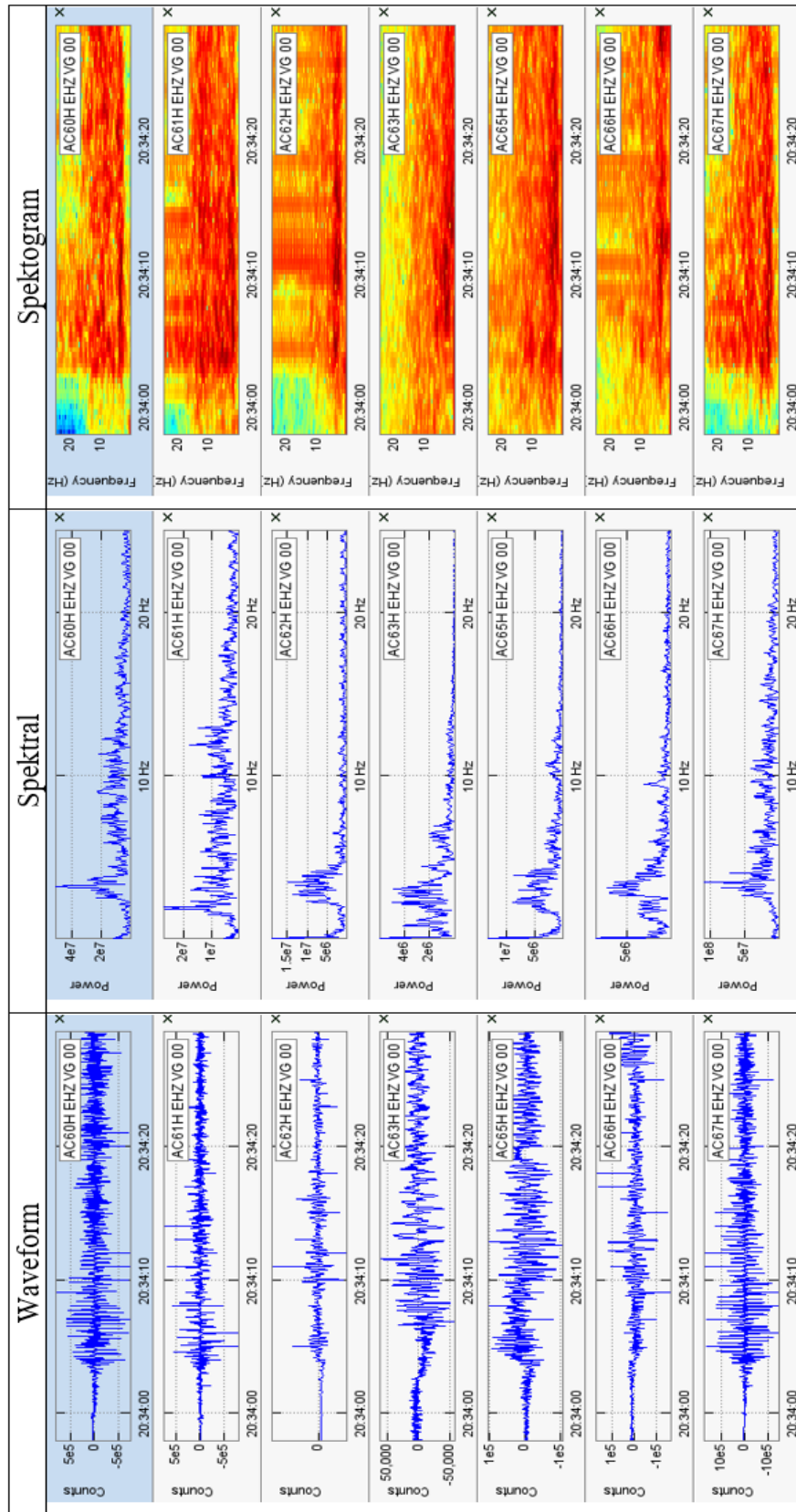
2009281513 – Gempa Hembusan



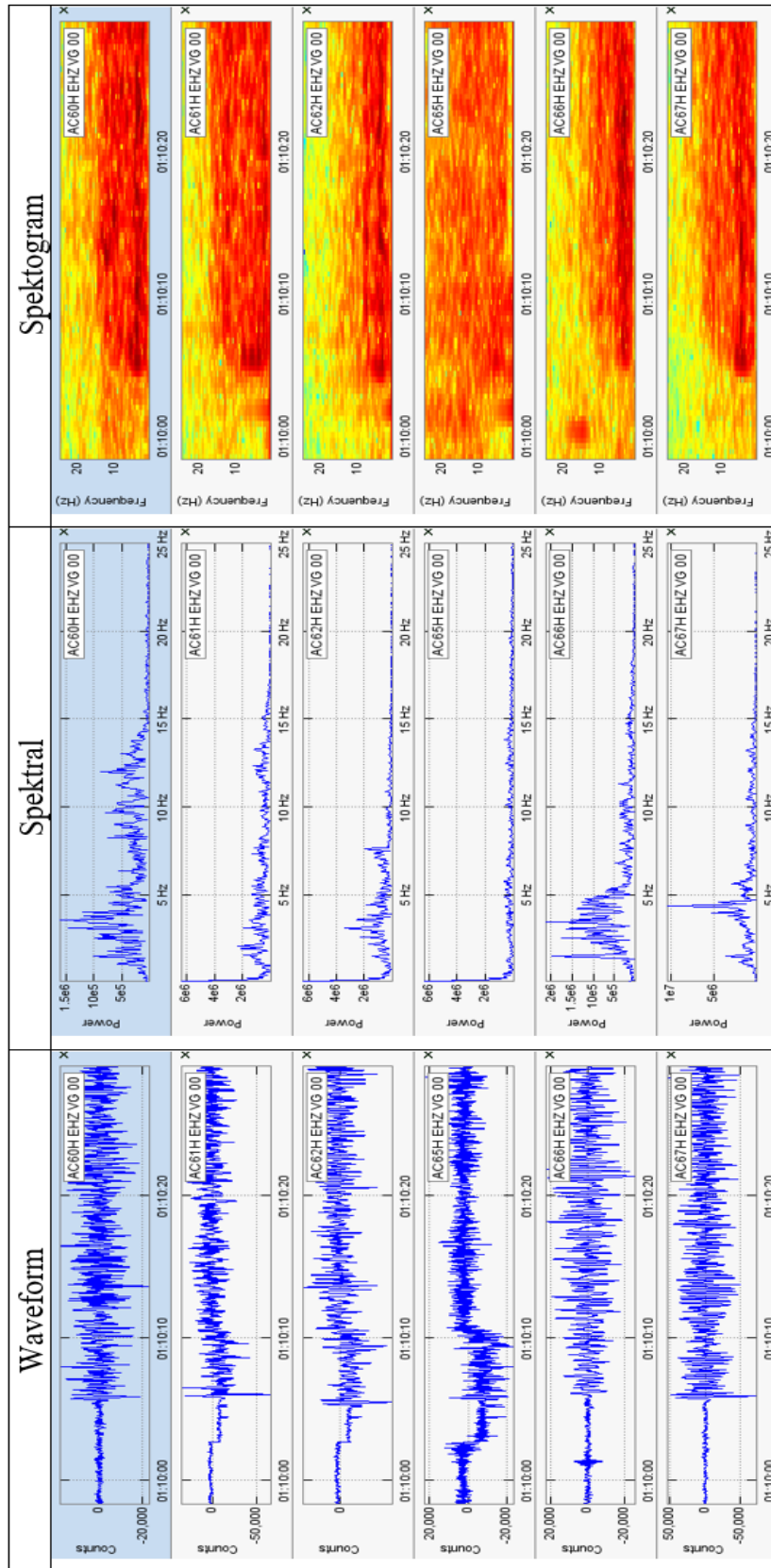


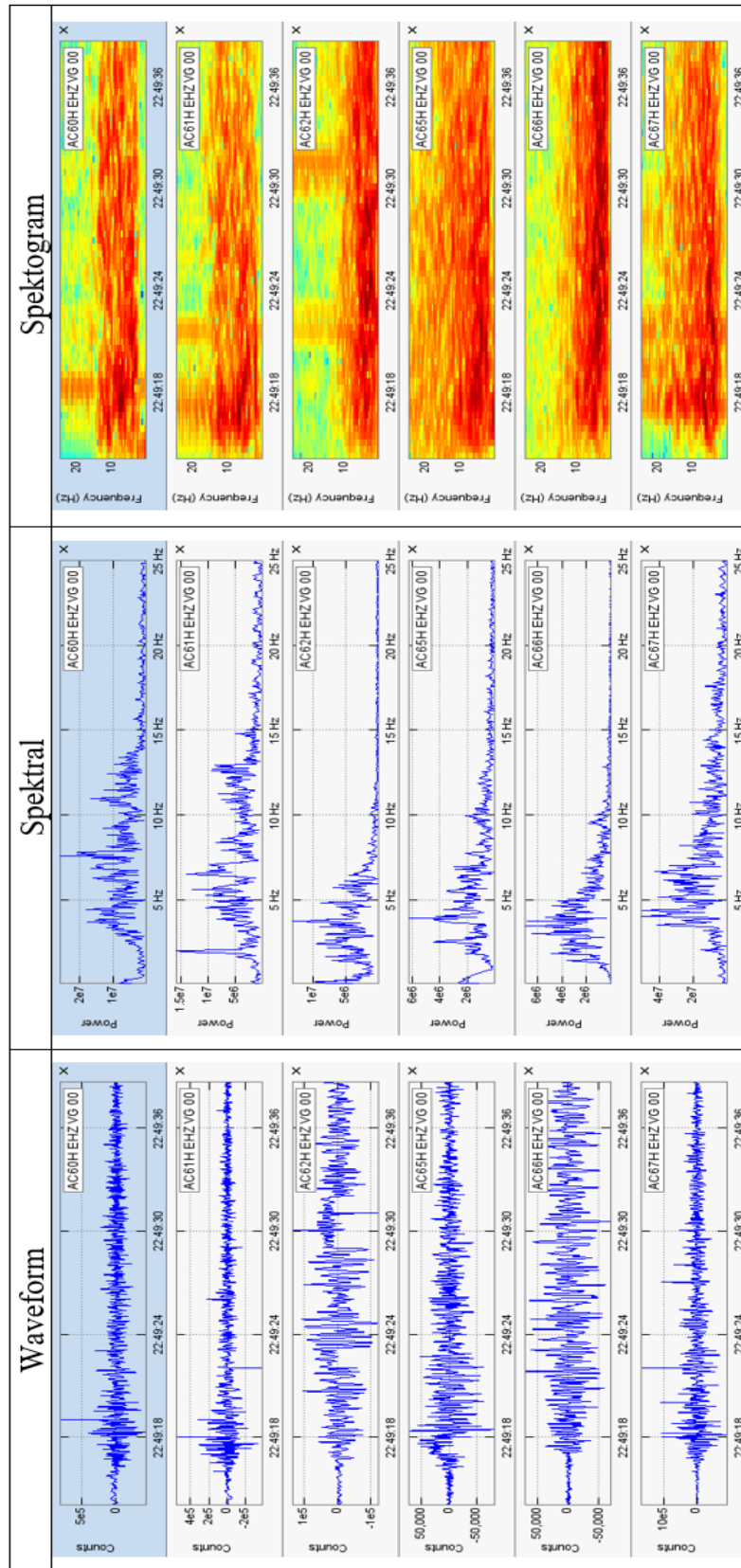
2010152353 – Gempa Hybrid



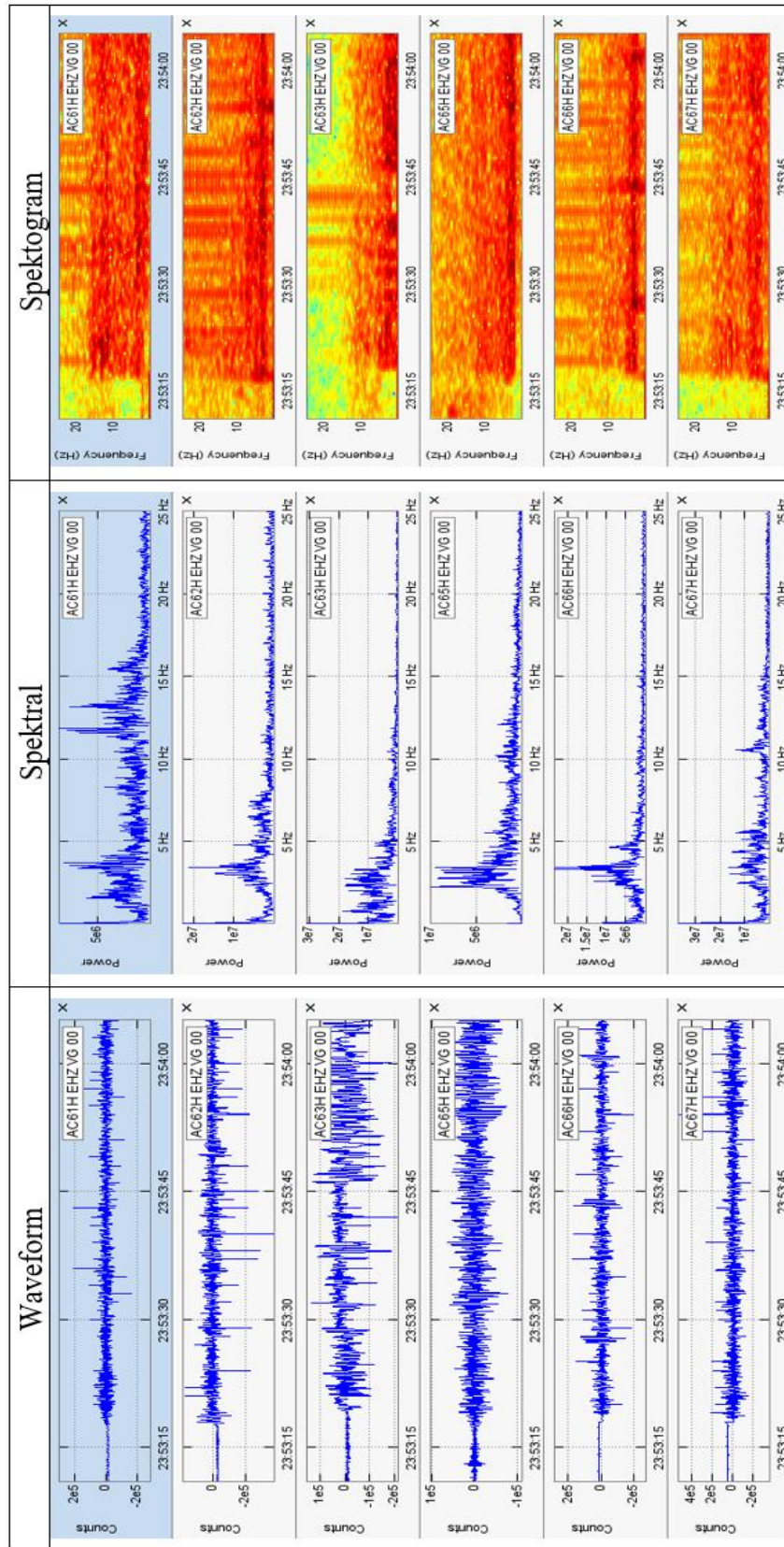


2011010110 – Gempa Hybrid

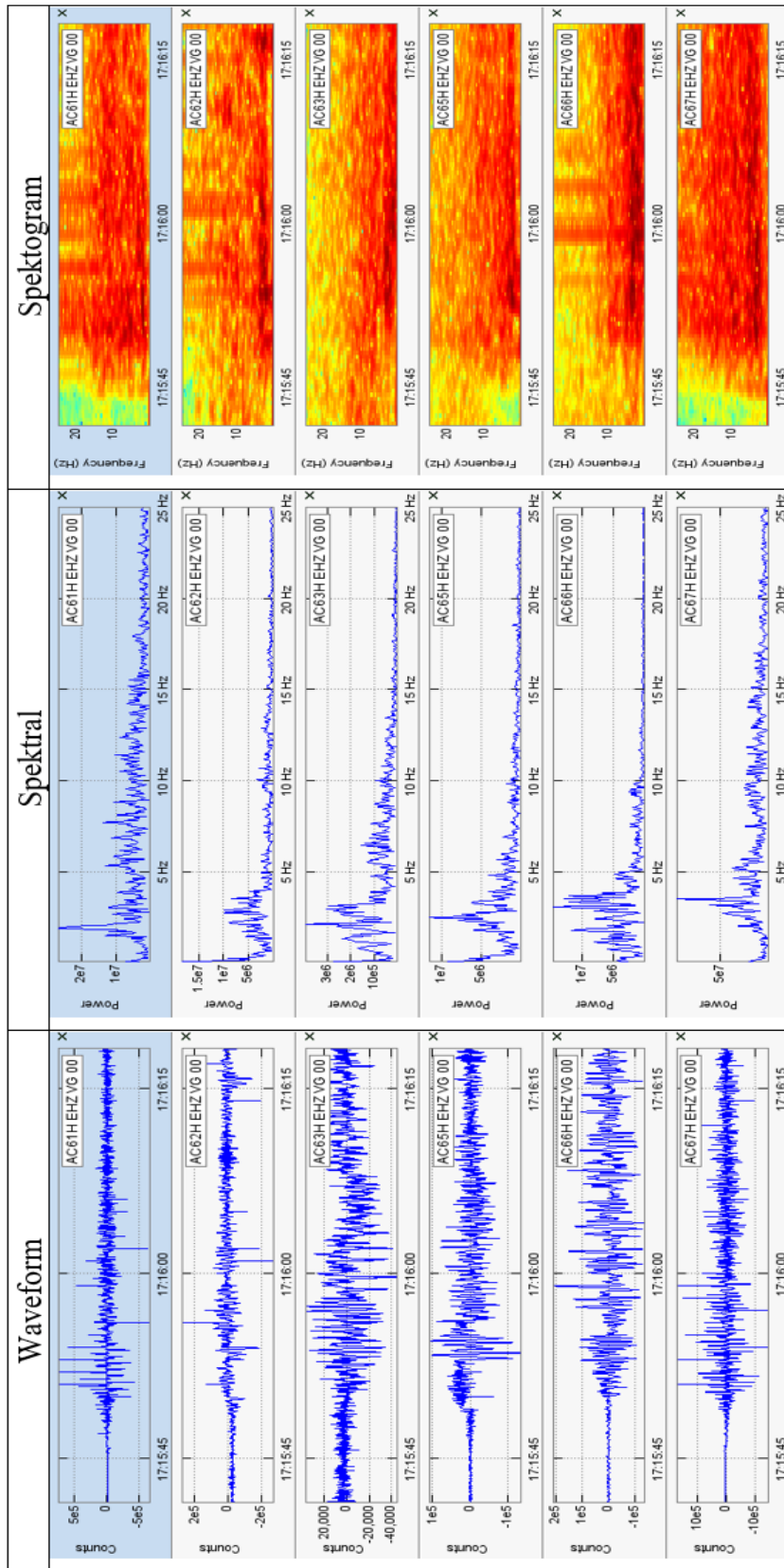


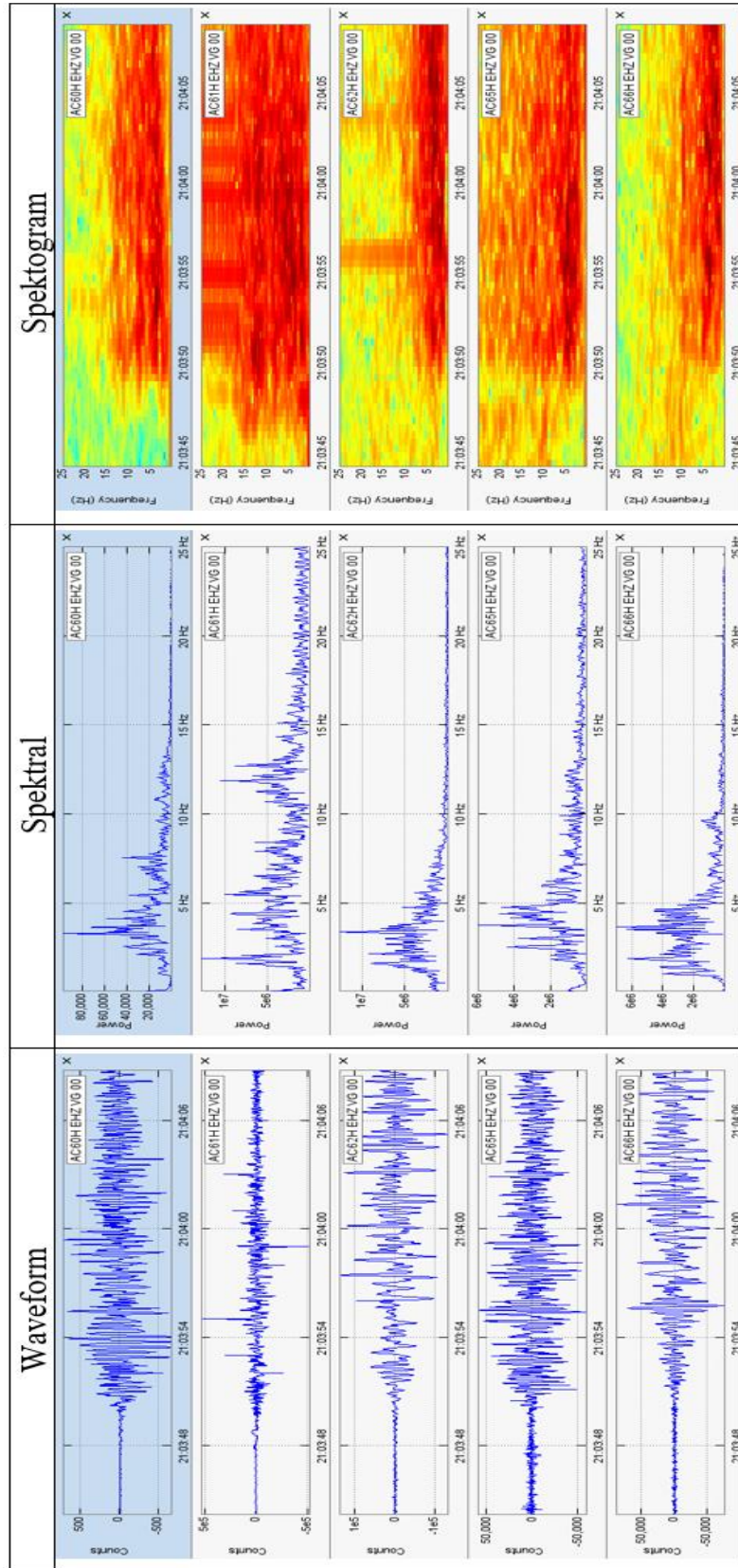


2011032353 – Gempa Low Frequency

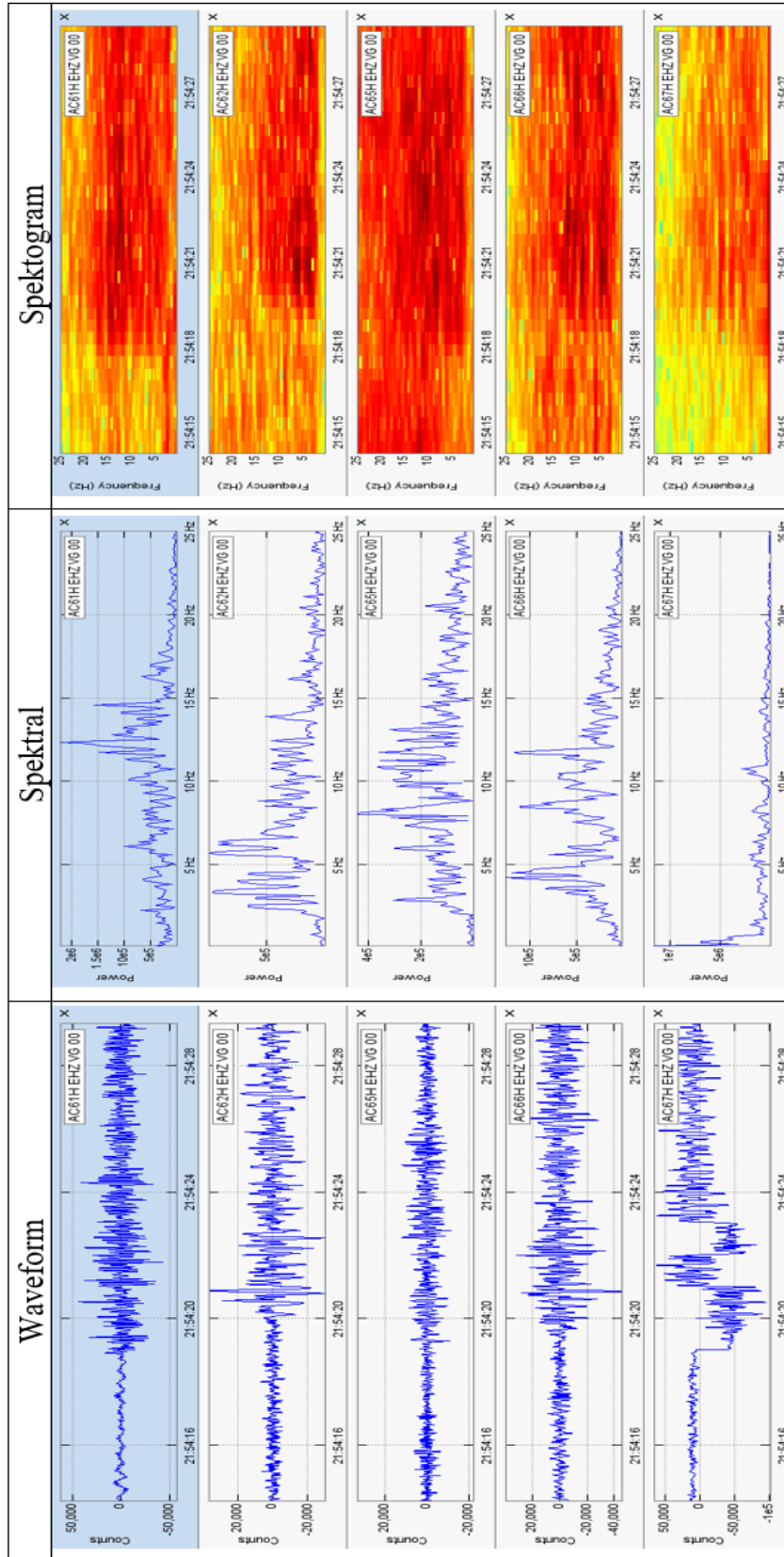


2011031715 – Gempa Low Frequency





2009052154 – Gempa Hembusan



Lampiran 2 : Hasil Picking Waktu Tiba Gempa VTA dan VTB

2009072257, SKN, 99.990, +, I, 99.990, I
2009072257, LKW, 99.990, +, I, 99.990, I
2009072257, SGR, 37.985, +, I, 40.789, E
2009072257, MDD, 99.990, +, I, 99.990, I
2009072257, GBR, 37.547, -, I, 39.439, I
2009072257, SBY, 35.878, -, I, 37.000, E
2009072257, KBY, 37.276, +, I, 40.078, I

2009072214, SKN, 99.990, -, I, 99.990, I
2009072214, LKW, 99.990, -, I, 99.990, I
2009072214, SGR, 99.990, -, I, 99.990, I
2009072214, MDD, 99.990, -, I, 99.990, I
2009072214, GBR, 02.751, -, I, 04.210, I
2009072214, SBY, 01.572, +, I, 02.127, E
2009072214, KBY, 02.951, +, I, 04.430, I

2009082107, SKN, 03.201, -, I, 03.841, I
2009082107, LKW, 03.173, +, I, 04.739, I
2009082107, SGR, 02.883, +, I, 04.351, E
2009082107, MDD, 99.990, +, I, 99.990, I
2009082107, GBR, 03.096, +, I, 04.161, E
2009082107, SBY, 99.990, +, I, 99.990, I
2009082107, KBY, 99.990, +, I, 99.990, I

2009271904, SKN, 99.990, +, I, 99.990, I
2009271904, LKW, 99.990, +, I, 99.990, I
2009271904, SGR, 99.990, +, I, 99.990, I
2009271904, MDD, 40.715, +, I, 41.751, E
2009271904, GBR, 40.066, +, I, 40.854, I
2009271904, SBY, 99.990, +, I, 99.990, I
2009271904, KBY, 39.546, +, I, 39.610, I

2009281859, SKN, 99.990, +, I, 99.990, I
2009281859, LKW, 35.644, +, I, 36.260, I
2009281859, SGR, 35.551, +, I, 36.341, I
2009281859, MDD, 36.035, +, I, 37.410, E
2009281859, GBR, 99.990, +, I, 99.990, I
2009281859, SBY, 99.990, +, I, 99.990, I
2009281859, KBY, 35.184, +, I, 35.760, I

2010232059, SKN, 99.990, +, I, 99.990, I
2010232059, LKW, 29.149, +, I, 31.000, I
2010232059, SGR, 28.941, +, I, 30.782, I
2010232059, MDD, 99.990, +, I, 99.990, I
2010232059, GBR, 99.990, +, I, 99.990, I
2010232059, SBY, 27.709, +, I, 29.189, E
2010232059, KBY, 28.000, -, I, 28.782, I

2011052017, SKN, 99.990, +, I, 99.990, I
2011052017, LKW, 18.304, -, I, 21.059, E
2011052017, SGR, 99.990, +, I, 99.990, I
2011052017, MDD, 99.990, +, I, 99.990, I
2011052017, GBR, 18.258, -, I, 20.692, I
2011052017, SBY, 16.858, +, I, 17.950, I
2011052017, KBY, 99.990, +, I, 99.990, I

2009102117, SKN, 99.990, +, I, 99.990, I
2009102117, LKW, 99.990, +, I, 99.990, I
2009102117, SGR, 39.333, +, I, 41.060, E
2009102117, MDD, 99.990, +, I, 99.990, I
2009102117, GBR, 39.582, +, I, 41.632, I
2009102117, SBY, 37.643, -, I, 38.450, E
2009102117, KBY, 38.143, -, I, 40.421, I

2009191757, SKN, 99.990, +, I, 99.990, I
2009191757, LKW, 33.755, +, I, 35.823, I
2009191757, SGR, 33.422, +, I, 35.000, E
2009191757, MDD, 99.990, +, I, 99.990, I
2009191757, GBR, 99.990, +, I, 99.990, I
2009191757, SBY, 31.653, -, I, 32.486, I
2009191757, KBY, 99.990, +, I, 99.990, I

2009191216, SKN, 99.990, +, I, 99.990, I
2009191216, LKW, 49.476, +, I, 51.242, I
2009191216, SGR, 49.415, +, I, 51.079, I
2009191216, MDD, 99.990, +, I, 99.990, I
2009191216, GBR, 99.990, +, I, 99.990, I
2009191216, SBY, 48.834, +, I, 49.641, I
2009191216, KBY, 99.990, +, I, 99.990, I

2009201448, SKN, 99.990, +, I, 99.990, I
2009201448, LKW, 16.887, +, I, 18.720, I
2009201448, SGR, 16.662, +, I, 18.000, I
2009201448, MDD, 99.990, +, I, 99.990, I
2009201448, GBR, 99.990, +, I, 99.990, I
2009201448, SBY, 15.894, +, I, 16.880, E
2009201448, KBY, 16.000, -, I, 16.410, I

2009282312, SKN, 99.990, +, I, 99.990, I
2009282312, LKW, 42.871, +, I, 45.400, I
2009282312, SGR, 42.782, +, I, 45.000, E
2009282312, MDD, 99.990, +, I, 99.990, I
2009282312, GBR, 42.571, +, I, 43.550, E
2009282312, SBY, 99.990, +, I, 99.990, I
2009282312, KBY, 42.592, +, I, 43.179, I

2009282119, SKN, 99.990, +, I, 99.990, I
2009282119, LKW, 43.845, +, I, 46.200, E
2009282119, SGR, 99.990, +, I, 99.990, I
2009282119, MDD, 99.990, +, I, 99.990, I
2009282119, GBR, 43.434, -, I, 44.670, I
2009282119, SBY, 99.990, +, I, 99.990, I
2009282119, KBY, 43.405, +, I, 44.170, I

2009282326, SKN, 99.990, -, I, 99.990, I
2009282326, LKW, 99.990, -, I, 99.990, I
2009282326, SGR, 99.990, -, I, 99.990, I
2009282326, MDD, 38.452, +, I, 39.910, I
2009282326, GBR, 38.041, -, I, 39.980, E
2009282326, SBY, 99.990, -, I, 99.990, I
2009282326, KBY, 37.912, +, I, 38.620, I

2010142140, SKN, 99.990, +, I, 99.990, I
2010142140, LKW, 99.990, +, I, 99.990, I
2010142140, SGR, 30.973, +, I, 32.763, I
2010142140, MDD, 99.990, +, I, 99.990, I
2010142140, GBR, 30.592, -, I, 32.824, I
2010142140, SBY, 29.001, +, I, 29.770, E
2010142140, KBY, 30.634, +, I, 32.282, E

2010300753, SKN, 56.335, -, I, 57.411, I
2010300753, LKW, 56.235, -, I, 57.042, I
2010300753, SGR, 56.000, -, I, 57.531, E
2010300753, MDD, 99.990, +, I, 99.990, I
2010300753, GBR, 99.990, +, I, 99.990, I
2010300753, SBY, 99.990, +, I, 99.990, I
2010300753, KBY, 99.990, +, I, 99.990, I

2011010354, SKN, 04.029, -, I, 05.023, I
2011010354, LKW, 04.284, +, I, 05.669, I
2011010354, SGR, 99.990, +, I, 99.990, I
2011010354, MDD, 99.990, +, I, 99.990, I
2011010354, GBR, 03.428, +, I, 04.267, E
2011010354, SBY, 99.990, +, I, 99.990, I
2011010354, KBY, 04.690, +, I, 05.697, E

9999999999

Lampiran 3 : Result Software GAD

```

nst      : 7
Station List
  SKN    2.485    .523  -1.468
  LKW    -.592    2.275 -1.467
  MDD   -2.680   -1.271 -1.178
  SBY   12.398    7.558 -2.014
  GBR    5.082   -1.815 -1.207
  SGR    1.921    1.644 -1.460
  KBY    3.996    5.548 -1.479
nZLayer: 6
zLayer :  -2.000  -1.000   .000   2.000   6.000
Vp      :    2.360   2.630   2.840   3.080   3.480   4.340
Vs      :    1.360   1.520   1.640   1.860   2.010   2.510

```

```

Hypocenter
Date 20 9 7 Time 22:57
  Focal Element Probable Error
  X 13.974      .528
  Y  3.417      .236
  Z  1.526      .694
  T 33.849      .230
Travel time residual rms= .142sec.

```

ST	P	S	Cal	(Obs-Cal)
SBY	35.878		35.819	.059
GBR	37.547		37.367	.180
SGR	37.985		38.008	-.023
KBY	37.276		37.407	-.131
SBY		37.000	37.191	-.191
GBR		39.439	39.743	-.304
SGR		40.789	40.860	-.071
KBY		40.078	39.821	.257

```

Date 20 9 7 Time 22:14
  Focal Element Probable Error
  X 12.503      .030
  Y  3.140      .030
  Z  1.659      .030
  T  -.499      .029
Travel time residual rms= .293sec.

```

ST	P	S	Cal	(Obs-Cal)
SBY	1.572		1.492	.080
GBR	2.751		2.588	.163
KBY	2.951		2.640	.311
SBY		2.127	2.878	-.751
GBR		4.210	4.677	-.467
KBY		4.430	4.776	-.346

Date 20 9 8 Time 21: 7
 Focal Element Probable Error
 X 6.143 .026
 Y 5.681 .026
 Z 1.248 .026
 T .500 .025
 Travel time residual rms= .279sec.

ST	P	S	Cal	(Obs-Cal)
SKN	3.201		2.815	.386
LKW	3.173		3.195	-.022
GBR	3.096		3.129	-.033
SGR	2.883		2.665	.218
SKN		3.841	4.406	-.565
LKW		4.739	5.040	-.301
GBR		4.161	4.918	-.757
SGR		4.351	4.155	.196

Date 20 9 27 Time 19: 4
 Focal Element Probable Error
 X 3.218 .529
 Y 2.888 .415
 Z .140 .582
 T 38.154 .140
 Travel time residual rms= .255sec.

ST	P	S	Cal	(Obs-Cal)
MDD	40.715		40.608	.107
GBR	40.066		39.917	.149
KBY	39.546		39.265	.281
MDD		41.751	42.290	-.539
GBR		40.854	41.145	-.291
KBY		39.610	40.065	-.455

Date 20 9 28 Time 18:59
 Focal Element Probable Error
 X .637 .020
 Y 5.754 .020
 Z 1.608 .020
 T 33.577 .020
 Travel time residual rms= .281sec.

ST	P	S	Cal	(Obs-Cal)
LKW	35.644		35.186	.458
MDD	36.035		36.290	-.255
SGR	35.551		35.347	.204
KBY	35.184		35.108	.076
LKW		36.260	36.295	-.035
MDD		37.410	38.131	-.721
SGR		36.341	36.566	-.225
KBY		35.760	36.164	-.404

Date 20 10 23 Time 20:59
 Focal Element Probable Error
 X 8.104 .068
 Y 7.558 .071
 Z 1.773 .072
 T 25.728 .058
 Travel time residual rms= .255sec.

ST	P	S	Cal	(Obs-Cal)
LKW	29.149		29.275	-.126
SBY	27.709		27.709	.000
SGR	28.941		28.783	.158
KBY	28.000		27.607	.393
LKW		31.000	31.708	-.708
SBY		29.189	29.085	.104
SGR		30.782	30.861	-.079
KBY		28.782	28.897	-.115

Date 20 11 5 Time 20:17
 Focal Element Probable Error
 X 7.888 .028
 Y 7.990 .028
 Z 1.104 .029
 T 14.841 .025
 Travel time residual rms= .099sec.

ST	P	S	Cal	(Obs-Cal)
LKW	18.304		18.379	-.075
SBY	16.858		16.767	.091
GBR	18.258		18.298	-.040
LKW		21.059	20.782	.277
SBY		17.950	18.117	-.167
GBR		20.692	20.635	.057

Date 20 9 10 Time 21:17
 Focal Element Probable Error
 X 9.861 .069
 Y 6.791 .074
 Z 1.454 .077
 T 36.074 .057
 Travel time residual rms= .209sec.

ST	P	S	Cal	(Obs-Cal)
SBY	37.643		37.595	.048
GBR	39.582		39.437	.145
SGR	39.333		39.387	-.054
KBY	38.143		38.315	-.172
SBY		38.450	38.660	-.210
GBR		41.632	41.710	-.078
SGR		41.060	41.639	-.579
KBY		40.421	39.854	.567

Date 20 9 19 Time 17:57
 Focal Element Probable Error
 X 8.737 .044
 Y 8.164 .044
 Z .920 .045
 T 29.896 .041
 Travel time residual rms= .218sec.

ST	P	S	Cal	(Obs-Cal)
LKW	33.755		33.684	.071
SBY	31.653		31.562	.091
SGR	33.422		33.167	.255
LKW		35.823	36.254	-.431
SBY		32.486	32.738	-.252
SGR		35.000	35.396	-.396

Date 20 9 19 Time 12:16
 Focal Element Probable Error
 X 6.358 .036
 Y 8.749 .037
 Z .930 .037
 T 46.192 .036
 Travel time residual rms= .299sec.

ST	P	S	Cal	(Obs-Cal)
LKW	49.476		49.487	-.011
SBY	48.834		48.581	.253
SGR	49.415		49.125	.290
LKW		51.242	51.731	-.489
SBY		49.641	50.249	-.608
SGR		51.079	51.131	-.052

Date 20 9 20 Time 14:48
 Focal Element Probable Error
 X 8.585 .035
 Y 4.357 .036
 Z 1.278 .036
 T 13.751 .034
 Travel time residual rms= .292sec.

ST	P	S	Cal	(Obs-Cal)
LKW	16.887		17.037	-.150
SBY	15.894		15.832	.062
SGR	16.662		16.336	.326
KBY	16.000		15.597	.403
LKW		18.720	19.274	-.554
SBY		16.880	17.284	-.404
SGR		18.000	18.108	-.108
KBY		16.410	16.873	-.463

Date 20 9 28 Time 23:12
 Focal Element Probable Error
 X 7.024 .465
 Y 2.888 .297
 Z 2.340 .601
 T 40.514 .252
 Travel time residual rms= .291sec.

ST	P	S	Cal	(Obs-Cal)
LKW	42.871		43.307	-.436
GBR	42.571		42.518	.053
SGR	42.782		42.645	.137
KBY	42.592		42.343	.249
LKW		45.400	45.241	.159
GBR		43.550	43.895	-.345
SGR		45.000	44.116	.884
KBY		43.179	43.606	-.427

Date 20 9 28 Time 21:19
 Focal Element Probable Error
 X 5.157 .053
 Y 2.380 .052
 Z .924 .054
 T 41.929 .047
 Travel time residual rms= .190sec.

ST	P	S	Cal	(Obs-Cal)
LKW	43.845		44.034	-.189
GBR	43.434		43.483	-.049
KBY	43.405		43.331	.074
LKW		46.200	45.489	.711
GBR		44.670	44.558	.112
KBY		44.170	44.310	-.140

Date 20 9 28 Time 23:26
 Focal Element Probable Error
 X 2.121 .029
 Y 2.444 .029
 Z .821 .029
 T 36.347 .027
 Travel time residual rms= .154sec.

ST	P	S	Cal	(Obs-Cal)
MDD	38.452		38.461	-.009
GBR	38.041		38.192	-.151
KBY	37.912		37.803	.109
MDD		39.910	39.912	-.002
GBR		39.980	39.465	.515
KBY		38.620	38.822	-.202

Date 20 10 14 Time 21:40
 Focal Element Probable Error
 X 12.217 .212
 Y 4.414 .189
 Z 1.713 .243
 T 27.303 .113
 Travel time residual rms= .255sec.

ST	P	S	Cal	(Obs-Cal)
SBY	29.001		28.968	.033
GBR	30.592		30.545	.047
SGR	30.973		30.985	-.012
KBY	30.634		30.263	.371
SBY		29.770	30.145	-.375
GBR		32.824	32.753	.071
SGR		32.763	33.517	-.754
KBY		32.282	32.296	-.014

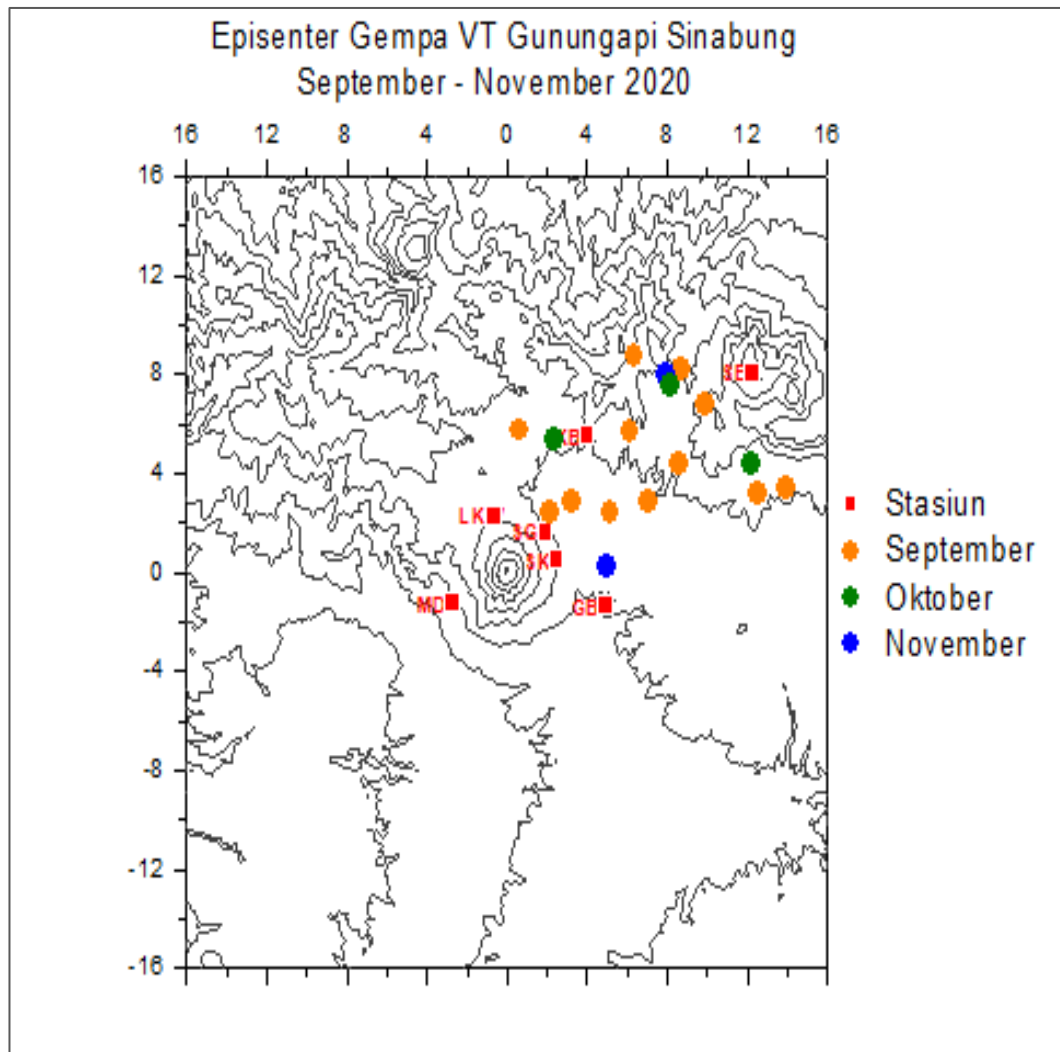
Date 20 10 30 Time 7:53
 Focal Element Probable Error
 X 2.336 .048
 Y 5.390 .046
 Z .414 .048
 T 54.553 .042
 Travel time residual rms= .152sec.

ST	P	S	Cal	(Obs-Cal)
SKN	56.335		56.339	-.004
LKW	56.235		56.151	.084
SGR	56.000		55.992	.008
SKN		57.411	57.591	-.180
LKW		57.042	57.277	-.235
SGR		57.531	57.010	.521

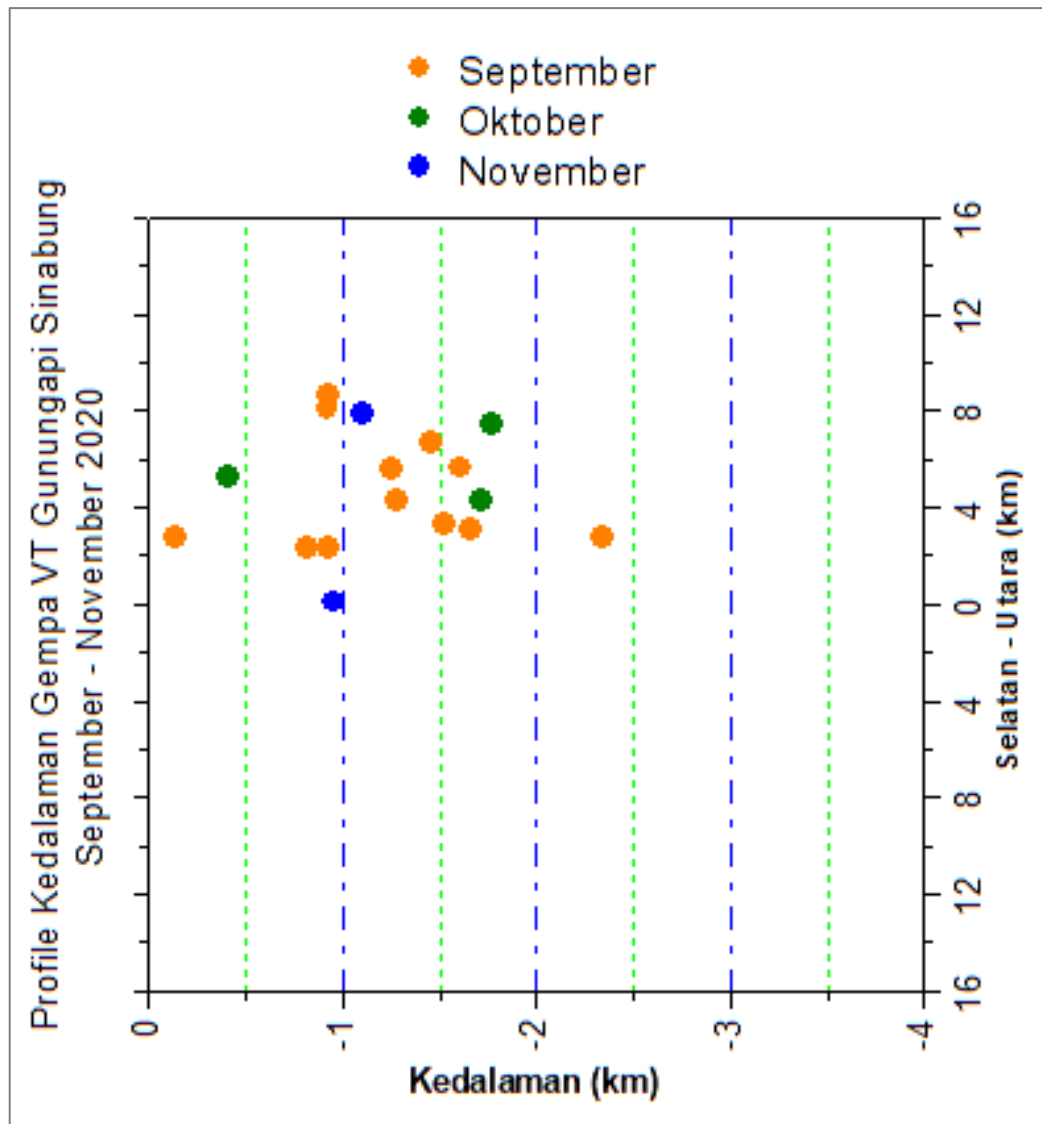
Date 20 11 1 Time 3:54
 Focal Element Probable Error
 X 4.939 .104
 Y .201 .102
 Z .958 .112
 T 2.523 .081
 Travel time residual rms= .284sec.

ST	P	S	Cal	(Obs-Cal)
SKN	4.029		3.693	.336
LKW	4.284		4.680	-.396
GBR	3.428		3.495	-.067
KBY	4.690		4.535	.155
SKN		5.023	4.512	.511
LKW		5.669	6.170	-.501
GBR		4.267	4.170	.097
KBY		5.697	5.929	-.232

Lampiran 4 : Distribusi Episenter Gempa VT Gunung Sinabung



Lampiran 5 : Distribusi Kedalaman Hiposenter Gempa VT Gunung Sinabung (Penampang Utara – Selatan)



**Lampiran 6 : Distribusi Kedalaman Hiposenter Gempa VT Gunung Sinabung
(Penampang Barat - Timur)**

