

## DAFTAR PUSTAKA

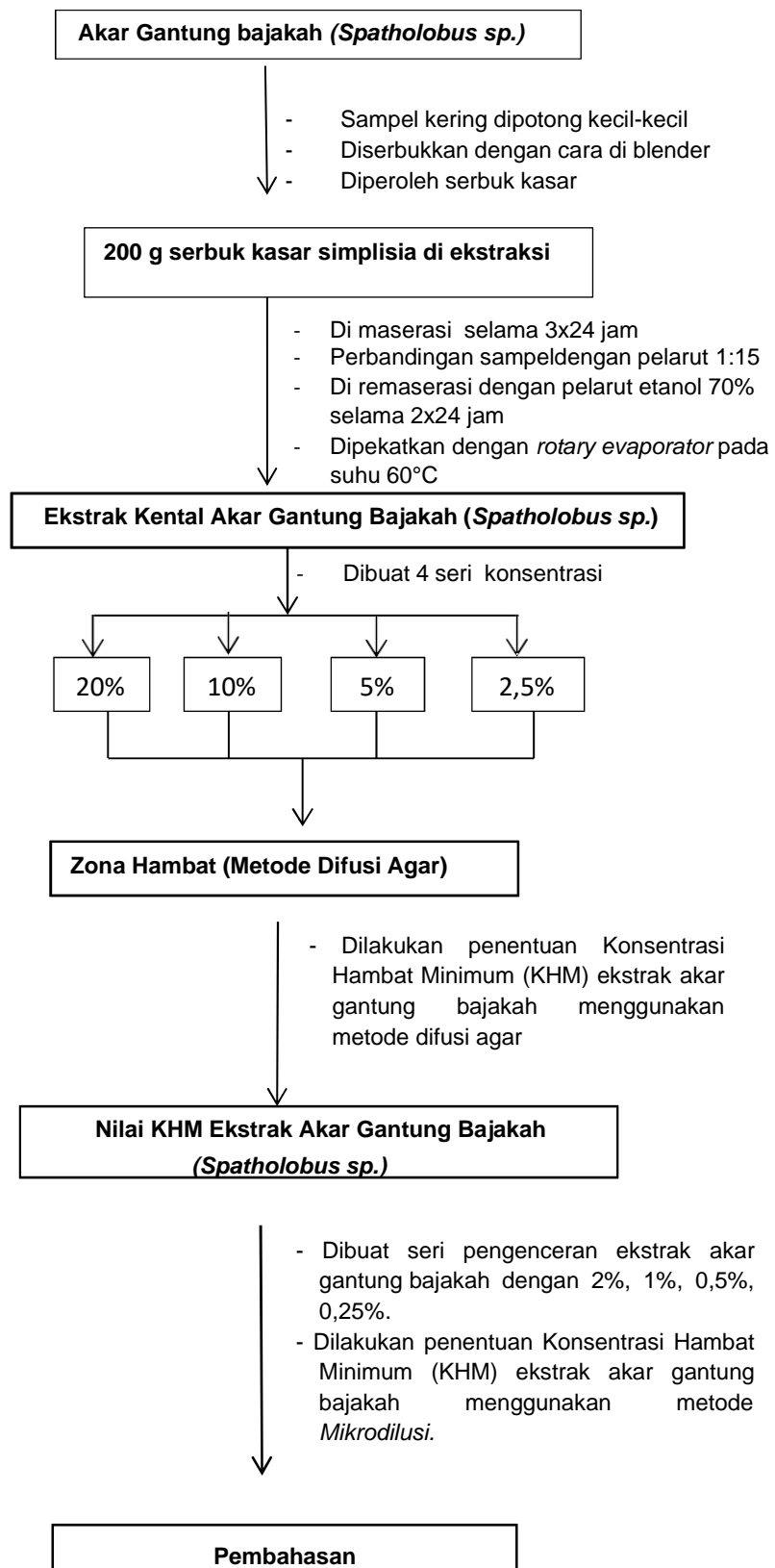
- Allen. 1981. *The Leguminosae a Source Book of Characteristics, Uses, and Nodulation*. University of Wisconsin Press, Madison pp. 618
- Anshari, I., 2012. Isolasi Dan Identifikasi Senyawa Kimia Fraksi Etil Asetat Batang Bajakah Tampala (*Spatholobus Littoralis* Hassk.) Asal Kalimantan Tengah. Skripsi. Fakultas Matematika dan Ilmu Pengetahuan Alam Jurusan Farmasi. Universitas Lambung Mangkurat. Banjarbaru.
- Balouiri, M., Sadiki, M., dan Ibsouda, S.K. 2015. Methods for in vitro evaluating antimicrobial activity: A review. *Journal of Pharmaceutical Analysis*. 6(2016): 71-79
- Cho, H., Beomkoo, C., Chang K.K., Dong, C.O., Ki, B.O., and Jongheon, S. 2017. *Spatholobus suberectus* Dunn. Constituents Inhibit Sortase A and *Staphylococcus aureus* Cell Clumping to Fibrinogen. *Archives of Pharmacal Research. Pharmaceutical Society of Korea*. 40(4). pp. 518–523
- Choi, E.J., Jang, S.R., Kang, O.J., , and Bang, W.S. 2013. Antimicrobial Activity of *Psoralea corylifolia*, *Schisandra chinensis*, and *Spatholobus suberectus* Extracts. *KOREAN J. FOOD SCI. TECHNOL*. Vol. 45, No. 4, pp. 495-500  
<http://dx.doi.org/10.9721/KJFST.2013.45.4.495>
- Darmadi. 2008. *Infeksi Nosokomial: Problematika dan pengendaliannya*. Salemba Medika:Jakarta.
- Depkes RI. 1995. *Farmakope Indonesia Edisi IV*. Departemen Kesehatan Republik Indonesia. Jakarta.
- Djide, M.N dan Sartini. 2008. *Analisis Mikrobiologi Farmasi*. Universitas Hasanuddin. Makassar
- Gillespie, R.J. dan Paul. 2001. *CheKHM Bonding and Molecular Geometry*. Oxford University Press, London
- Iskandar, D., dan Warsidah. 2020. Qualitative PhytocheKHM Screening and Antioxidant Activity of Ethanol Root Extract of *Spatholobus littoralis* Hassk. 1. pp. 13–15.
- Kartawinata, K., dan Mien, A.R. 1985. *Reinwardtia. A Journal on TaxonoKHM Botany, Plant Sociology and Ecology*. Herbarium Bogoriense. Kembaga Biologi Nasional (LIPI). Bogor. Indonesia.
- Kim, G., Ren-You, G., Dan, Z., Arakkaveetil, K.F., Olivier, H., Vuyo, M., , Hua-Bin, L., Xiao-Hong, W., and Harold, C. 2020. Large-Scale Screening of 239 Traditional Chinese Medicinal Plant Extracts for Their Antibacterial Activities against Multidrug-Resistant *Staphylococcus aureus* and Cytotoxic Activities. *Phatogens*. MDPI. doi:10.3390/pathogens9030185

- Kumar, E. J., Imran, Moehammad., Lawrence, Rubina, Alam, Nasruddin. M.D., and Shariq Mohd., 2012. Synergistic Effects Of Ocium Sanctum and Antibiotics On Methicillin Resistant Staphylococcus aureus (MRSA) Isolated From Clinical Specimens, Journal Of Recent Advance In Applied Sciences, 27, 99-107.
- Lakhundi Sahreena and Kunyan Zhang. 2018. Methicillin-Resistant Staphylococcus aureus: Molecular Characterization, Evaluation, and Epidemiology. Clinical Microbiology Reviews. Centre for Antimicrobial Resistance, Alberta Health Services Calgary Laboratory Service University of Calgary.
- Li, W.T., Liu, R.G., Guan, J.P., Chen, D.P., Yang, Z.M., Zhao, D. M., and Wang. 2015. Chemical Characterization of Procyanidins from *Spatholobus suberectus* and their antioxidative and anticancer activities. Journal of Functional Foods 12:468–477.
- Majewska, I dan Gendaszewska, E. Proangiogenic Activity of Plant Extracts in Accelerated Wound healing. A New Face of Old Phytomedicine. ACTA ABP Biochimica Polonica, 58 : 449- 460.
- Maulina, S., Pratiwi, D. R., & Erwin. 2019. Skrining Fitokimia dan Bioaktivitas Ekstrak Akar *Uncaria nervosa* Elmer (Bajakah). Jurnal Atomik. Universitas Mlawarman. Indonesia.
- Montville, T J. and Matthews, K. R. 2008. Food Microbiology: An introduction (2nd ed.) United States of America: ASM Press, Washington. 1(2):442-452
- Morison, J., Moya. 2003. A Colour Guide The Nursing Management of Wounds. EGC, Jakarta : 10-20.
- Najib, A. 2018. Ekstraksi senyawa Bahan Alam, Edisi 1. CV.Budi Utama:Yogyakarta. pp:39.
- Ninkaew, S., dan Chantaranonthai, P. 2014. The Genus *Spatholobus* Hassk . ( *Leguminosae Papilionoideae* ) in Thailand. Tropical Natural History, 14((2) October), 87–99.
- Olga, P., Petar, K., Jelena, M., dan Srdjan, R . 2015. Screening Method for Detection of Hydrocarbon-oxidizing Bacteria in Oilcontaminated Water and Soil Specimens. *Journal of Microbiological Methods*. 74: 110-11
- Park, W., Chan, W.A., Hyunjoon, C., Chang, K.K., Jongheon, S., and Ki, B.O. 2017. Inhibitory Effects of Flavonoids from *Spatholobus suberectus* on Sortase A and sortase a-mediated Aggregation of *Streptococcus mutans*. Journal of Microbiology and Biotechnology. 27(8). pp. 1457–1460.

- Stierman, B. 2012. Vancomycin Resistance in *Staphylococcus aureus*: A Danger Dent in Our Armamentarium. *Clinical Correlations The NYU Langone Online Journal of Medicine (Online)*. pp. 1-4
- Sirijan, S., Nitaya, I. 2016. Mechanisms of Antimicrobial Resistance in Pasteurellaceae. *PBioMed Research International* 2016(1155). pp. 1–8
- Tang, R.N., Qu, X.B., Guan, S.H., Xu, P.P., Shi, Y.Y., Guo, D.A., 2012. CheKHMAl constituents of *Spatholobus suberectus*. *Chin. J. Nat. Med.* 10, 32–35. [https://doi.org/10.1016/S1875-5364\(12\)60007-7](https://doi.org/10.1016/S1875-5364(12)60007-7).
- Tropicos.org. Missouri Botanical Garden. 12 Apr 2021 <http://www.tropicos.org>: *Spatholobus suberectus* Dunn.
- Jorgensen, J. H., & Turnidge, J. D. 2016. *Susceptibility Test Methods : Dilution and Disk Diffusion Methods*. American Society KHMrobiology.
- Xiao, L. C., Jin, Y.W., Ping, L., Lian, W. Q. 2011. Ultrasonic/KHMrowave assisted extraction and diagnostic ion filtering strategy by liquid chromatography-quadrupole time-of-flight mass spectrometry for rapid characterization of flavonoids in *Spatholobus suberectus*. *Journal of Chromatography A*. Elsevier B.V. 1218(34), pp. 5774–5786
- Zhang, Q.-W., Lin, L.-G., & Ye, W.-C. 2018. Techniques for extraction and isolation of natural products: a comprehensive review. *Chinese Medicine*, 13(1). doi:10.1186/s13020-018-0177.
- Zhiyu, W., Dongmei, W., Shouwei, H., Neng, W., Feizhi, M. Tjing, Y, L., Jiangang, S., Hui, H., Jianping, C. 2013. Bioactivity-Guided Identification and Cell Signaling Technology to Delineate the Lactate Dehydrogenase A Inhibition Effects of *Spatholobus suberectus* on Breast Cancer. *PLoS ONE* 8(2): e56631. doi:10.1371/journal.pone.0056631

## Lampiran 1

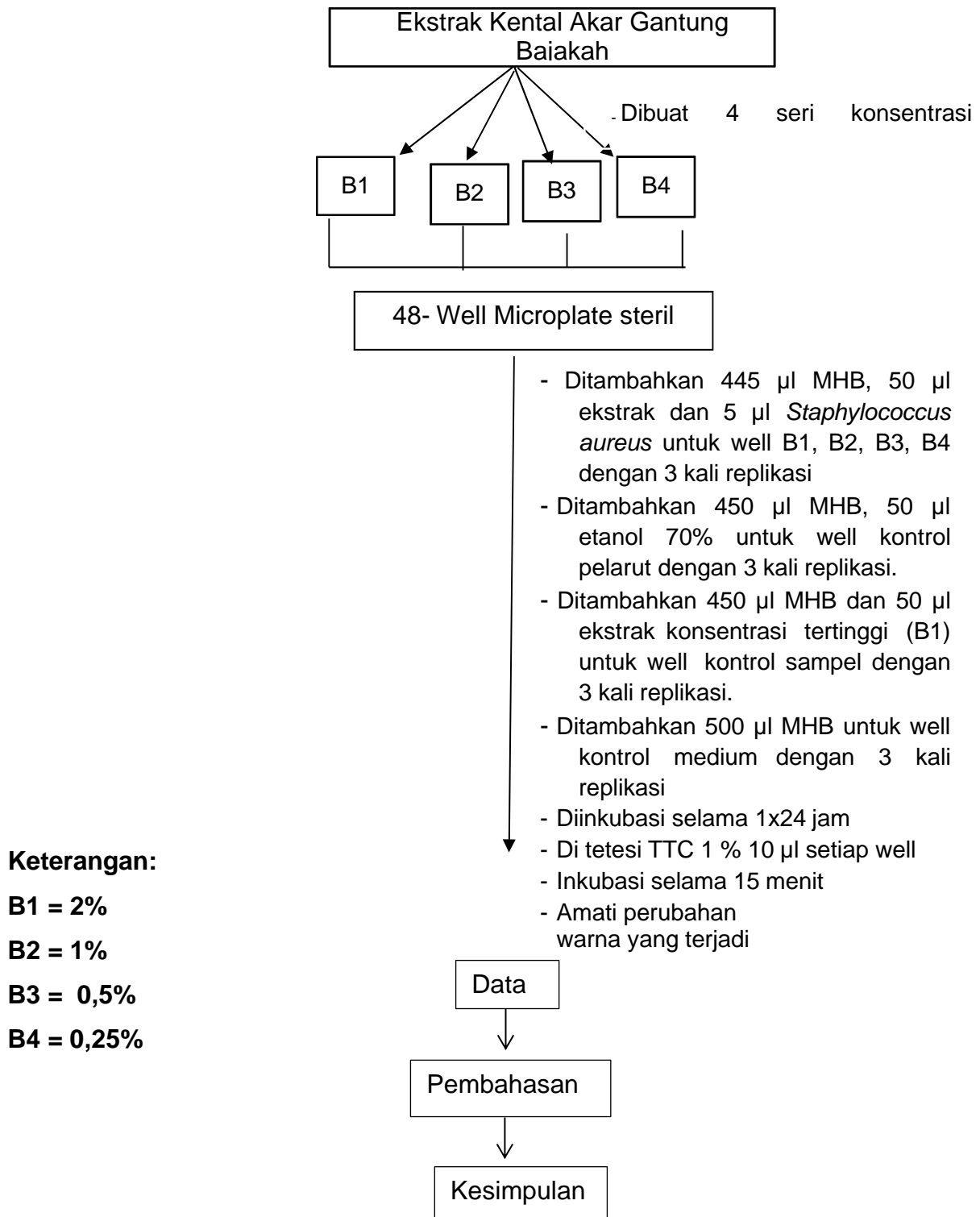
### Skema Kerja





**Kesimpulan**

**Lampiran 2**  
**Skema Penentuan Nilai KHM Ekstrak Akar Gantung Bajakah**  
**(*Spatholobus sp.*)**



### Lampiran 3

#### Skema Kerja Penentuan Daya Hambat Akar Bajakah

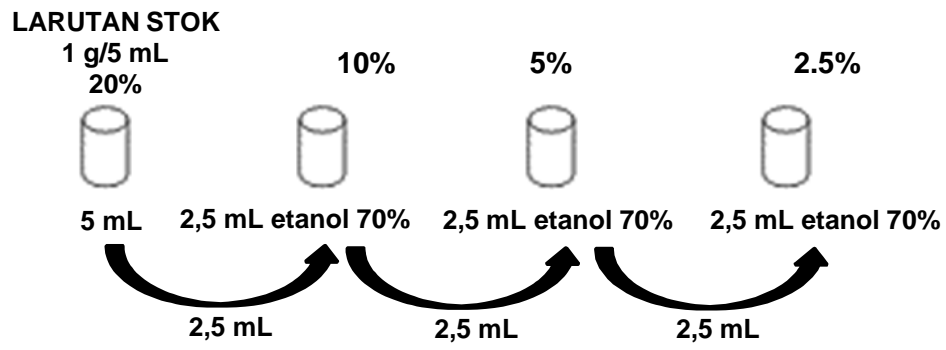
Cawan Petri Steril

- Tuangkan medium MHA steril
- Tunggu hingga medium memadat
- Tetesi 10  $\mu$ l suspensi bakteri *S.aureus* yang kekeruhannya setara dengan *Mc Farland* 0.5
- Ratakan penyebaran suspensi bakteri menggunakan *spreader*
- Tempelkan *papper disk* yang telah ditetesi 20 mikroliter ekstrak bajakah konsentrasi 20%, 10%, 5%, dan 2,5%.
- Tempelkan *papper disk* yang telah ditetesi 20 mikroliter kontrol negatif (etanol 70%)
- Tempelkan *papper disk amoxicillin*.
- Pra-inkubasi pada suhu ruang selama 30 menit
- Inkubasi pada inkubator selama 1 x 24 jam pada suhu 37°C

Diameter zona hambat disekeliling *blank disk*

- Diukur diameter zona hambat yang terbentuk menggunakan jangka sorong

Lampiran 4  
Skema Kerja Pengenceran Sampel





## Lampiran 5 Komposisi Medium

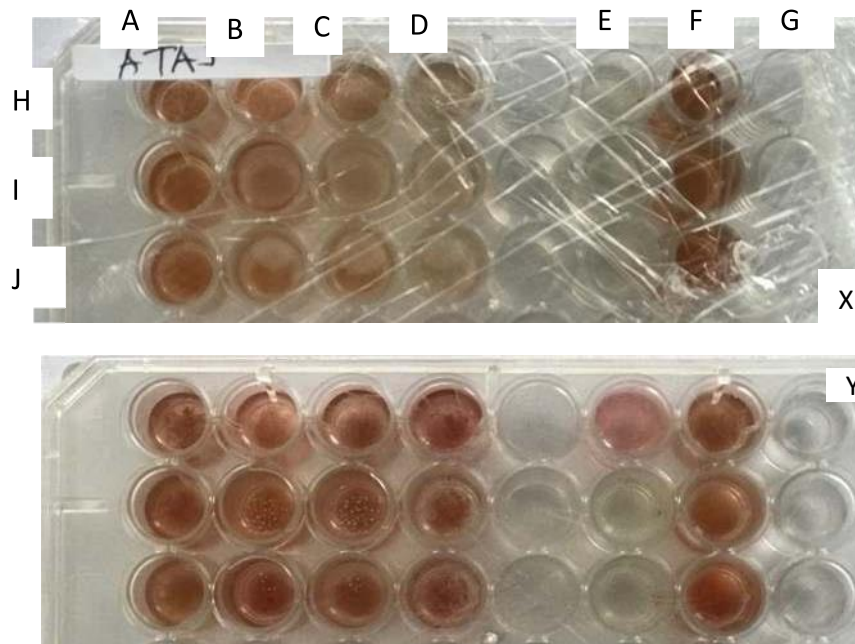
### 1. *Mueller Hinton Agar*

<i>Beef extract</i>	2 gram
<i>Acid hydrolysate of casein</i>	17,5 gram
<i>Starch</i>	1,5 gram
<i>Agar</i>	17 gram
<i>Aquadest</i>	1 Liter

### 2. *Mueller Hinton Broth*

<i>Acid casein pepton</i>	17,5 gram
<i>Beef infusion</i>	2 gram
<i>Corn starch</i>	1,5 gram
<i>Aquadest</i>	1 Liter

Lampiran 7  
Gambar

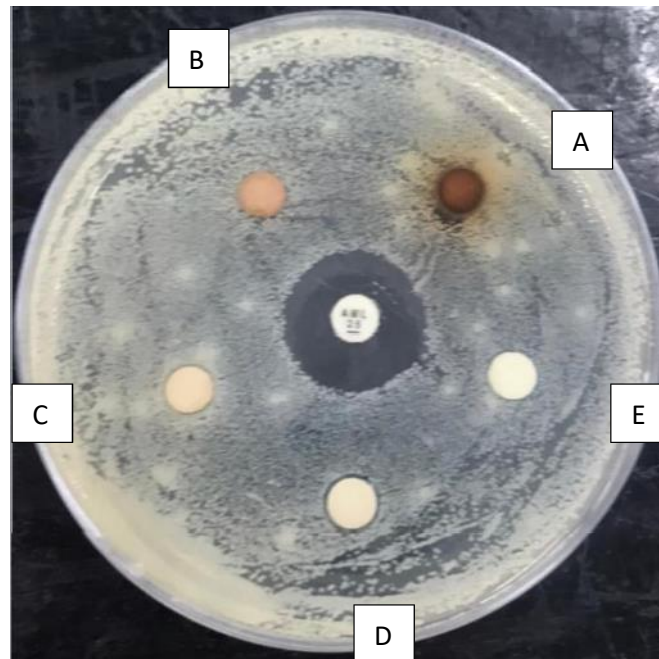


Gambar 3. Hasil Uji Antibakteri menggunakan metode mikrodilusi sebelum

(X) dan setelah (Y) ditetesi TTC 1%

Keterangan:

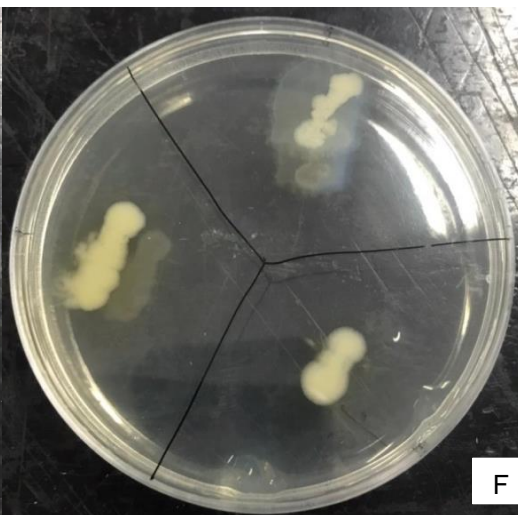
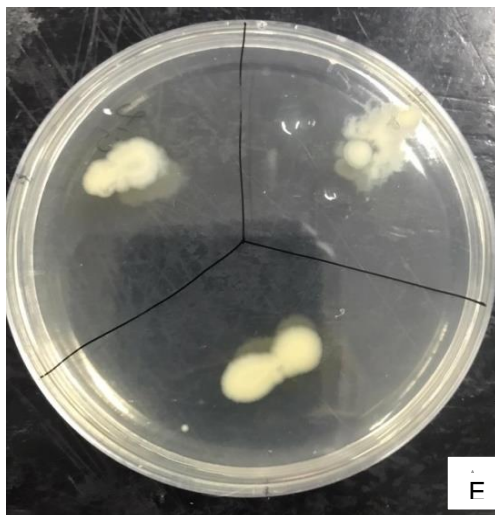
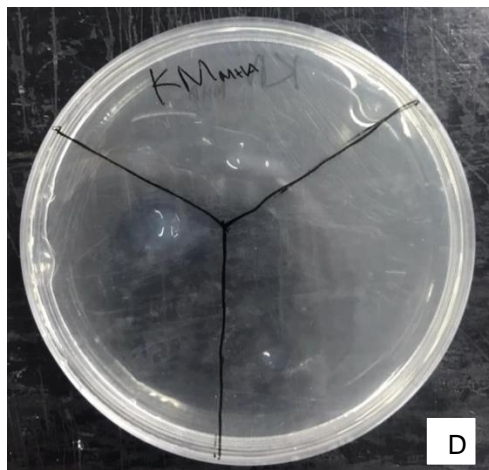
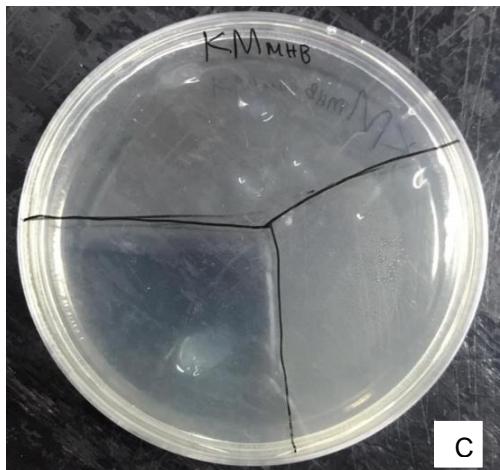
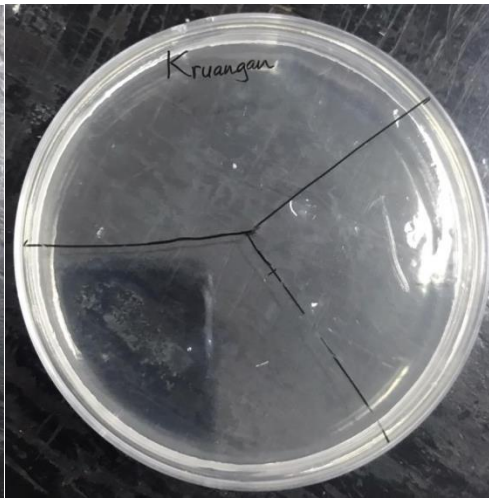
- A = Konsentrasi 2%
- B= Konsentrasi 1%
- C= Konsentrasi 0,5%
- D= Konsentrasi 0,25%
- E= Kontrol Pelarut (Etanol 70%)
- F= Kontrol Ekstrak
- G= Kontrol Medium
- X= Sebelum ditetesi TTC 1 %
- Y= Setelah ditetesi TTC 1 %

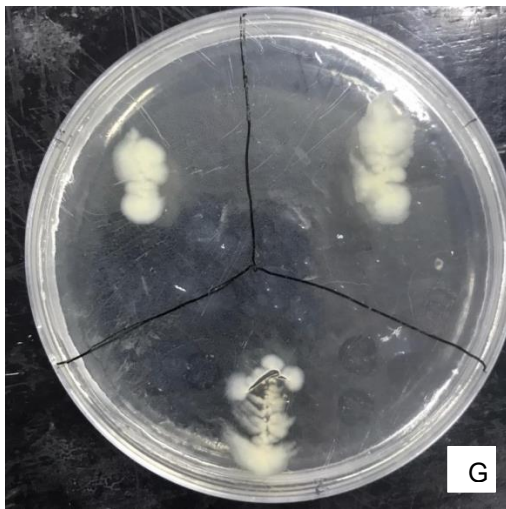


**Gambar 4. Hasil uji antibakteri menggunakan metode mikrodilusi padat medium MHA**

Keterangan:

- A = Konsentrasi 20% (4 mg/disk)
- B = Konsentrasi 10% (2 mg/disk)
- C = Konsentrasi 5% (1 mg/disk)
- D = Konsentrasi 2.5% (0.5 mg/disk)
- E = Kontrol Pelarut
- F = Antibiotik Amoxicilin





Keterangan:

- A= Kontrol Ekstrak
- B= Kontrol Ruang
- C= Kontrol MHB
- D= Kontrol MHA
- E= Ekstrak 2,5%
- F= Ekstrak 5%
- G= Ekstrak 20%
- H= Ekstrak 10%



**Gambar 5. Dokumentasi pengambilan sampel bajakah**