

## DAFTAR PUSTAKA

- Anggorodi. 2005. *Pengaruh Pemberian Jahe dalam Ransum Terhadap Tingkat Kecernaan Ayam Broiler*. Jurnal Teknologi Pertanian 6(1): 7-14. ISSN: 1885-2419.
- Asmawati. 2013. *The effect of in ovo feeding on hatching weight and small intestinal tissue development of native chicken*. (Disertasi) Fakultas Peternakan Universitas Hasanuddin. Makassar.
- Akpodiete, O. J., and O. E. Inoni. 2000. *Economics of production of broiler chickens fed maggot meal as replacement for fish meal*. Nigerian J. Anim. Prod. 27: 59-63.
- Auza, F A, S. Purwanti, J. A. Syamsu and A Natsir. 2020. *Antibacterial activities of black soldier flies (Hermetia illucens, l) extract towards the growth of salmonella thyphimurium, E. Coli and Pseudomonas aeruginosa IOP Conference Series Eath and Environmental Science*, 492 (1); 1-6. DOI: 10. 1088/1755-1315/492/1/012024.
- Banjo AD., O.A, Lawal, and O.O. Olusole. 2005. *Bacteria associated with Hermetia illucens (Linnaeus) diptera: Stratiomyidae*. Asian J Microbiol Biotechnol Environ Sci Pap. 7:351-354.
- Caligiani A, Marseglia A, Leni G, Baldassarre S, Maistrello L, Dossena A, Sforza S. 2017. *Composition of black soldier fly prepupae and systematic approaches for extraction and fractionation of proteins, lipids and chitin*. Food Res Int. 105:812-820.
- Choi WH, Yun JH, Chu JP, Chu KB. 2012. *Antibacterial effects of extract of Hermetia illucens (Diptera: Stratiomyidae) larvae against Gram-negative bacteria*. Entomol. Res. 42:219-226.
- De Haas EM, Wagner C, Koelmans AA, Kraak MHS, Admiraal W. 2006. *Habitat selection by chironomid larvae: Fast growth requires fast food*. J. Anim Ecol. 75:148-155.
- Diwyanto, K., A. Priyanti, dan I. Inounu. 2005. *Prospek Arah Pengembangan Komoditas Peternakan: Ulinggas, Sapi dan Kambing-Domba*. Pusat Penelitian dan Pengembangan Peternakan. Bogor
- Dortmans,B., S. Diener, B. Vestappen, and Christian Zurbrugg. 2017. *Proses Pengolahan Sampah Organik dengan Black Solier Fly (BSF)*. Eawag-Swiss Federal Institute of Aquatic Science and Technology Department of Sanitation, Water and Solid Waste for Development (Sandec). Switzerland.

- Fosgerau, K., and T. Hoffmann. 2015. *Peptide therapeutics: Current status and future directions*. Drug Discov Today. 20:122-128.
- Gadzirayi, C.T and J. F. Mupangwa. 2014. *Feed Intake and Growth Performance of Indigenous Chicks Fed Diets with Moringa oleifera Leaf Meal as A Protein Supplement During Early Brooding Stage*. Int. J. Poult. Sci., 13 (3): 145-150.
- Gasperz. 1991. *Teknik analisis dalam penelitian percobaan*. Tarsito: Bandung
- Ghosh, J.D. dan Singh, J. 1994. *Acute Ascariidiosis in chickens*. A Report. Indian Veterinary Journal. Vol. Edition: 717-719.
- Gunawan, B. dan T. Sartika. 2001. *Persilangan Ayam Pelung Jantan X Kampung Betina Hasil Seleksi Generasi Kedua (G2)*. Pusat Penelitian dan Pengembangan Peternak, Deptan. Bogor.
- Gunawan dan Sartika. 2005. *Pengantar Ilmu Peternakan*. Universitas Hasanuddin. Makasar.
- Gobbi P, Martínez-Sánchez A, Rojo S. 2013. *The effects of larval diet on adult life-history traits of the Black Soldier Fly, Hermetia illucens (Diptera: Stratiomyidae)*. Eur J Entomol. 110:461-468.
- Harlystiarini. 2017. *Pemanfaatan Tepung Larva Black Soldier Fly (hermetia illucens) sebagai Sumber Protein Pengganti Tepung Ikan pada Ransum Puyuh Petelur (cortunix cortunix japonica)*. Institut Pertanian Bogor. Bogor.
- Herdiani, N, dan Putri, B. P. 2018. *Gambaran Histopatologi Paru Tikus Wistar Setelah Diberi Paparan Asap Rokok*. Medical and Health Science Journal 2(2): 7-14.
- Indarto, E., Jamhari., Zahra, F., Zuprizal dan Kustantinah. 2011. *Pengaruh Penggunaan Dried Distillers Grain With Soluble (DDGS) pada Ransum Berenergi Rendah terhadap Karkas, Lemak Abdominal, dan Hati Ayam Ayam pedaging*. Buletin Peternakan Vol. 35(2): 71-78.
- Iskandar. 2006. *Ayam Silangan Pelung-Kampung : Tingkat Protein Ransum Untuk Produksi Daging Umur 12 Minggu*. Wartazoa vol. 16 (2) : 65-71.
- Julferina, S. 2008. *Pemanfaatan Tepung Keong Mas sebagai Sustitusi Tepung Ikan dalam Ransum terhadap Performamans Kelinci Jantan Lepas Sapih*. Jurnal Peternakan. Fakultas Pertanian

- Universitas Sumatera Utara Medan. Diakses pada tanggal 03 Januari 2011.
- Kaleka. 2005. *Anatomi dan Fisiologi Ternak Unggas*. Universitas gajah mada. Yogyakarta.
- Koni, T. N. I., J. Bale-Therik, dan P.R.Kale. 2013. Pemanfaatan kulit pisang hasil fermentasi *Rhyzopus oligosporus* dalam ransum terhadap pertumbuhan ayam pedaging. *Jurnal Veteriner.*, 14 (3):365-370.
- Lalander C, Diener S, Magri ME, Zurbrugg C, Lindstrom A, Vinneras B. 2013. Faecal sludge management with the larvae of the Black Soldier Fly (*Hermetia illucens*) from a hygiene aspect. *Sci Total Enviroment*. 458- 460:312-318.
- Lalander CH, Fidjeland J, Diener S, Erikson S, Vinneras B. 2015. *High waste-to-biomass conversion and efficient Salmonella spp reduction using Black Soldier Fly for waste recycling*. *Agron Sustain Dev*. 35:261-271.
- Lesson, S. and J. D. Summers. 2001. *Nutrition of the chicken*, 4th Edition, pp, 331-428 (University Books, P. O. Box 1326, Guelph, Ontario, Canada NIH 6N8).
- Makkar, H.P.S., G. Tran, V. Heuze, and P. Ankreas. 2014. *State of the art on use of insects as animal feed*. *Anim Feed Sci Technol*. 197:1-33.
- Mangunwardoyo, W., Aulia, dan S. Hem. 2011. *Penggunaan bungkil inti kelapa sawit hasil biokonversi sebagai substrat pertumbuhan larva Hermetia illucens L (maggot)*. *Biota*. 16:166-172.
- Maturin L, Peeler JT. 2001. *Aerobic Plate Count*. In: *Bacteriological Analytical Manual Online*. Center for Food Safety and Applied Nutrition. Washington DC (US): US Food and Drug Administration.
- Maurer V, Holinger M, Amsler Z, Fruh B, Wohlfahrt J, Stamer A, Leiber F. 2016. *Replacement of soybean cake by Hermetia illucens meal in diets for layers*. *J Insect Food Feed*. 2:83-90. McShaffrey D. 2013. *Hermetia illucens*-
- Nuroso. 2011. *Teknologi Hasil Ternak*. Universitas Padjadjaran. Bandung.
- Pagale, M. A., dan Takdir S. 2016. *Karakteristik Fenotip Kualitatif Ayam Kampung Super*. *Jurnal Ilmiah Peternakan Halu Olea*. Universitas Halu Olea

- Rahmanto. 2012. *Struktur Histologik Usus halus dan Efisiensi Pakan Ayam Kampung dan Ayam Broiler*. S1 Thesis. Universitas Negeri Yogyakarta.
- Rasyaf. 2008. *Anatomi dan Fisiologi Ternak Unggas*. Universitas Gadjah Mada. Yogyakarta.
- Rasyaf. 2007. *Panduan Beternak Ayam Pedaging*. Jakarta : Penebar Swadaya.
- Rose. 2001. *Anatomi dan Fisiologi Ternak Unggas*. Universitas Gadjah Mada. Yogyakarta.
- Rumondor, G., Maaruf, K., Wolayan, F. R., Tulung, Y. R. L., & Wolayan, F. R. (2016). *Pengaruh penggantian tepung ikan dengan tepung maggot black soldier (Hermetia illucens) dalam ransum terhadap persentase karkas dan lemak abdomen broiler*. Zootec, 36(1), 131–138.
- Sheehy. E.J. 1983. *Animal Nutrition*. McMillan co., London.
- Silmina D., Edriani, G., & Putri, M. (2011). *Efektifitas Berbagai Media Budidaya Terhadap Pertumbuhan Maggot Hermetia illucens*. Bogor. Retrieved from <http://repository.ipb.ac.id/handle/123456789/43974>
- Spector W,G., 1993, *Pengantar Patologi Umum, edisi Ketiga*, Direvisi oleh T,D. Spector, 71-91, Fakultas Kedokteran, UGM, Yogyakarta.
- Steel. 2006. *Pengaruh Penambahan Kunyit (Curcuma domesticum Val.) dan Lempuyang (Zingiber arimaticum Val.) dalam Ransum terhadap Kecernaan Bahan kering, Bahan organik dan Lemak Kasar Broiler*. Buletin Peternakan Fakultas Peternakan Universitas Gajah Mada. Yogyakarta.
- Soeparno. 1994. *Ilmu dan Teknologi Daging*. Gadjah Mada University Press. Yogyakarta
- Sun, X. 2004. *Broiler performance and intestinal alterations when fed drug-free diets*. Thesis. Animal and Poultry Science. Blacksburg. Virginia.
- Suprijatna, E. 2005. *Pengaruh protein ransum saat periode pertumbuhan terhadap performans produksi telur saat periode produksi pada ayam ras petelur tipe medium*. J.Indon.Trop.Anim.Agric. Fakultas Peternakan Universitas Diponegoro. Semarang.

- Suprijatna, E. U. Atmomarsono, R. Kartasudjana 2008. *Ilmu Dasar Ternak Unggas*. Penebar Swadaya. Jakarta.
- Sutama. 2011. *Management Ternak Unggas*. Universitas Hasanuddin. Makasar.
- Sumarni. 2008. *Efektifitas tepung daun jarak (Jathropa curcas L.) sebagai anticacing Ascaridia galli dan pengaruhnya terhadap performa ayam kampung*. Skripsi. Fakultas Peternakan. Institut Pertanian Bogor, Bogor
- Teguia, A., M. Mpoame, J.A. Okourou. 2002. *The production performance of broiler birds as affected by the replacement of fish meal by maggot meal in the starter and finisher diets*. Tropicultura 20 (4): 187-192.
- Teme, A. B. Y., Selan Y. N., Amalo F. A. 2019. *Gambaran Anatomi dan Histologi Oesofagus dan Proventrikulus Pada Ayam Hutan Merah (Gallus gallus) asal Pulau Timor*. Jurnal Veteriner Nusantara 2(2): 85-103.
- Tomberlin JK.,PH. Adler, and HM. Myers. 2009. *Development of the Black Soldier Fly (Diptera: Stratiomyidae) in relation to temperature*. Environmental Entomol. 38:930-934.
- Tomberlin JK, and D.C. Sheppard. 2002. *Factors influencing mating and oviposition of Black Soldier Flies (Diptera: Stratiomyidae) in a colony*. J Entomology Sci. 37:345-352.
- Wahju. 2004. *Ilmu Nutrisi Unggas*. Yogyakarta: Universitas Gajah Mada Press.
- Wahju. 1992. *Ilmu Makanan Ternak*. Jogjakarta: Universitas Gajah Mada Press.
- Wang D, Shao WZ, Chuan XZ, Yao YB, Shi HA, Ying NX. 2005. *Evaluation on nutritional value of field crickets as a poultry feedstuff*. Asian-Australas J Anim Sci. 18:667-670.
- Wang, Y., & Ruhe, G. R. 2007. *The Cognitive Process of Decision Making*. International Journal of Cognitive Informatics and Natural Intelligence, 1(2), 73-85.
- Wardhana, A. H., Muharsini, S. 2004. *Studi pupa lalat penyebab Myasis, Chrysomya bezziana di Indonesia*. Dalam: Thalib A, Sendow I, Purwadaria T, Tarmudji, Darmono, Triwulanningsih E, Beriajaya, Natalia L, Nurhayati, Ketaren PP, et al., penyunting. Iptek sebagai

Motor Penggerak Pembangunan Sistem dan Usaha Agribisnis Peternakan. Prosiding Seminar Nasional Teknologi Peternakan dan Veteriner. Bogor, 4-5 Agustus 2004. Bogor (Indonesia): Puslitbangnak. hlm. 702-710.

Wiadnyana, I. M. P., Budiasa K., Berata, I. K. 2015. *Histopatologi Usus Halus Mencit Pasca Pemberian Ekstrak Etanol Daun Ashitaba*. Buletin Veteriner Udayana 7(1): 73-79.

Wresdiyati. U., Laila, S.R., Setio R., Arief, I.A., Astawan, M. 2013. *Probiotik Indigenus Meningkatkan Profil Kesehatan Usus Halus Tikus yang Diinfeksi Enteropathogenic E. coli*. Departemen Anatomi, Fisiologi, dan Farmakologi. Fakultas Kedokteran Hewan. IPB. Bogor..

Veldkamp T., Bosch G. 2015. *Insects: A protein-rich feed ingredient in pig and poultry diets*. Anim Front. 5:45-50.

Yaman. 2013. *Pengaruh Pemberian Jahe Dalam Ransum Terhadap Tingkat Kecernaan Ayam Broiler*. Jurnal Teknologi Pertanian 6(1): 7-14. ISSN: 1885-2419.

Yu G., P. Cheng, Y., Chen, Y Li, Z .Yang, Y. Chen, and JK. Tomberlin. 2011. *Inoculating poultry manure with companion bacteria influences growth and development of Black Soldier Fly (Diptera: Stratiomyidae) larvae*. Environ Entomol. 40:30-35.

Yunilas. 2005. *Performans ayam broiler yang diberi berbagai tingkat protein hewani dalam ransum*. Jurnal Agribisnis Peternakan 1(1).

Lampiran 1. Analisis ragam dan uji lanjut penggunaan tepung maggot BSF terhadap Konsumsi Pakan

**Descriptives**

|       | N  | Mean    | Std. Deviation | Std. Error | 95% Confidence Interval for Mean |             | Minimum | Maximum |
|-------|----|---------|----------------|------------|----------------------------------|-------------|---------|---------|
|       |    |         |                |            | Lower Bound                      | Upper Bound |         |         |
| P0    | 4  | 38.6725 | 2.08617        | 1.04308    | 35.3529                          | 41.9921     | 36.46   | 40.99   |
| P1    | 4  | 39.1625 | 2.44706        | 1.22353    | 35.2687                          | 43.0563     | 36.15   | 41.48   |
| P2    | 4  | 36.9150 | .87596         | .43798     | 35.5212                          | 38.3088     | 36.01   | 38.05   |
| P3    | 4  | 35.0175 | .43790         | .21895     | 34.3207                          | 35.7143     | 34.60   | 35.60   |
| P4    | 4  | 34.5850 | .39770         | .19885     | 33.9522                          | 35.2178     | 34.18   | 35.05   |
| Total | 20 | 36.8705 | 2.32843        | .52065     | 35.7808                          | 37.9602     | 34.18   | 41.48   |

**ANOVA**

|                | Sum of Squares | Df | Mean Square | F     | Sig. |
|----------------|----------------|----|-------------|-------|------|
| Between Groups | 68.638         | 4  | 17.160      | 7.488 | .002 |
| Within Groups  | 34.372         | 15 | 2.291       |       |      |
| Total          | 103.010        | 19 |             |       |      |

**Hasil**

Duncan<sup>a</sup>

| Perlakuan | N | Subset for alpha = 0.05 |         |
|-----------|---|-------------------------|---------|
|           |   | 1                       | 2       |
| P4        | 4 | 34.5850                 |         |
| P3        | 4 | 35.0175                 |         |
| P2        | 4 | 36.9150                 | 36.9150 |
| P0        | 4 |                         | 38.6725 |
| P1        | 4 |                         | 39.1625 |
| Sig.      |   | .056                    | .064    |

Means for groups in homogeneous subsets are displayed.

a. Uses Harmonic Mean Sample Size = 4.000.

Lampiran 2. Analisis ragam dan uji lanjut penggunaan tepung maggot BSF  
pertambahan bobot badan (PBB)

**Descriptives**

|       | N  | Mean    | Std. Deviation | Std. Error | 95% Confidence Interval for Mean |             | Minimum | Maximum |
|-------|----|---------|----------------|------------|----------------------------------|-------------|---------|---------|
|       |    |         |                |            | Lower Bound                      | Upper Bound |         |         |
| P0    | 4  | 10.4325 | .25038         | .12519     | 10.0341                          | 10.8309     | 10.13   | 10.68   |
| P1    | 4  | 11.2175 | .30037         | .15019     | 10.7395                          | 11.6955     | 10.99   | 11.66   |
| P2    | 4  | 10.6800 | .21970         | .10985     | 10.3304                          | 11.0296     | 10.46   | 10.98   |
| P3    | 4  | 10.1350 | .08347         | .04173     | 10.0022                          | 10.2678     | 10.05   | 10.24   |
| P4    | 4  | 9.1375  | .10436         | .05218     | 8.9714                           | 9.3036      | 9.04    | 9.27    |
| Total | 20 | 10.3205 | .73192         | .16366     | 9.9780                           | 10.6630     | 9.04    | 11.66   |

**ANOVA**

|                | Sum of Squares | Df | Mean Square | F      | Sig. |
|----------------|----------------|----|-------------|--------|------|
| Between Groups | 9.521          | 4  | 2.380       | 54.334 | .000 |
| Within Groups  | .657           | 15 | .044        |        |      |
| Total          | 10.178         | 19 |             |        |      |

**Homogeneous Subsets**

|                     | PBB (PERLAKUAN) | N | Subset for alpha = 0.05 |         |         |         |
|---------------------|-----------------|---|-------------------------|---------|---------|---------|
|                     |                 |   | A                       | b       | c       | d       |
| Duncan <sup>a</sup> | P4              | 4 | 9.1375                  |         |         |         |
|                     | P3              | 4 |                         | 10.1350 |         |         |
|                     | P0              | 4 |                         | 10.4325 | 10.4325 |         |
|                     | P2              | 4 |                         |         | 10.6800 |         |
|                     | P1              | 4 |                         |         |         | 11.2175 |
|                     | Sig.            |   |                         | 1.000   | .063    | .115    |

Means for groups in homogeneous subsets are displayed.

a. Uses Harmonic Mean Sample Size = 4.000.



Lampiran 3. Analisis ragam dan uji lanjut penggunaan tepung maggot BSF terhadap konversi pakan

**Descriptives**

|       | N  | Mean   | Std. Deviation | Std. Error | 95% Confidence Interval for Mean |             | Minimum | Maximum |
|-------|----|--------|----------------|------------|----------------------------------|-------------|---------|---------|
|       |    |        |                |            | Lower Bound                      | Upper Bound |         |         |
| P0    | 4  | 3.4075 | .11236         | .05618     | 3.2287                           | 3.5863      | 3.30    | 3.54    |
| P1    | 4  | 3.2300 | .17068         | .08534     | 2.9584                           | 3.5016      | 3.04    | 3.45    |
| P2    | 4  | 3.1850 | .01732         | .00866     | 3.1574                           | 3.2126      | 3.17    | 3.20    |
| P3    | 4  | 3.1725 | .01258         | .00629     | 3.1525                           | 3.1925      | 3.16    | 3.19    |
| P4    | 4  | 3.4450 | .00577         | .00289     | 3.4358                           | 3.4542      | 3.44    | 3.45    |
| Total | 20 | 3.2880 | .14359         | .03211     | 3.2208                           | 3.3552      | 3.04    | 3.54    |

**ANOVA**

|                | Sum of Squares | Df | Mean Square | F     | Sig. |
|----------------|----------------|----|-------------|-------|------|
| Between Groups | .265           | 4  | .066        | 7.839 | .001 |
| Within Groups  | .127           | 15 | .008        |       |      |
| Total          | .392           | 19 |             |       |      |

**Homogeneous Subsets**

|                     | KONVERSI PAKAN (PERLAKUAN) | N | Subset for alpha = 0.05 |        |
|---------------------|----------------------------|---|-------------------------|--------|
|                     |                            |   | A                       | b      |
| Duncan <sup>a</sup> | P3                         | 4 | 3.1725                  |        |
|                     | P2                         | 4 | 3.1850                  |        |
|                     | P1                         | 4 | 3.2300                  |        |
|                     | P0                         | 4 |                         | 3.4075 |
|                     | P4                         | 4 |                         | 3.4450 |
|                     | Sig.                       |   |                         | .415   |

Means for groups in homogeneous subsets are displayed.

a. Uses Harmonic Mean Sample Size = 4.000.

Lampiran 4. Analisis ragam aktifitas anti bakteri tepung maggot BSF dalam Ransum Terhadap Bakteri *Escherichia coli*

### Descriptives

Hasil

|       | N  | Mean      | Std. Deviation | Std. Error | 95% Confidence Interval for Mean |             | Minimum | Maximum |
|-------|----|-----------|----------------|------------|----------------------------------|-------------|---------|---------|
|       |    |           |                |            | Lower Bound                      | Upper Bound |         |         |
| P0    | 4  | 5000.0000 | 2449.48974     | 1224.74487 | 1102.3152                        | 8897.6848   | 3000.00 | 8000.00 |
| P1    | 4  | 4500.0000 | 1732.05081     | 866.02540  | 1743.9207                        | 7256.0793   | 2000.00 | 6000.00 |
| P2    | 4  | 2750.0000 | 1707.82513     | 853.91256  | 32.4691                          | 5467.5309   | 1000.00 | 5000.00 |
| P3    | 4  | 1000.0000 | 816.49658      | 408.24829  | -299.2283                        | 2299.2283   | .00     | 2000.00 |
| P4    | 4  | 1750.0000 | 957.42711      | 478.71355  | 226.5198                         | 3273.4802   | 1000.00 | 3000.00 |
| Total | 20 | 3000.0000 | 2152.11035     | 481.22650  | 1992.7814                        | 4007.2186   | .00     | 8000.00 |

### ANOVA

Hasil

|                | Sum of Squares | Df | Mean Square | F     | Sig. |
|----------------|----------------|----|-------------|-------|------|
| Between Groups | 4750000.000    | 4  | 1187500.000 | 4.398 | .015 |
| Within Groups  | 4050000.000    | 15 | 270000.000  |       |      |
| Total          | 8800000.000    | 19 |             |       |      |

### Hasil

|                     | Perlakuan | N | Subset for alpha = 0.05 |           |
|---------------------|-----------|---|-------------------------|-----------|
|                     |           |   | 1                       | 2         |
| Duncan <sup>a</sup> | P3        | 4 | 1000.0000               |           |
|                     | P4        | 4 | 1750.0000               |           |
|                     | P2        | 4 | 2750.0000               | 2750.0000 |
|                     | P1        | 4 |                         | 4500.0000 |
|                     | P0        | 4 |                         | 5000.0000 |
|                     | Sig.      |   |                         | .173      |

Means for groups in homogeneous subsets are displayed.

a. Uses Harmonic Mean Sample Size = 4.000.

## DOKUMENTASI KEGIATAN PENELITIAN



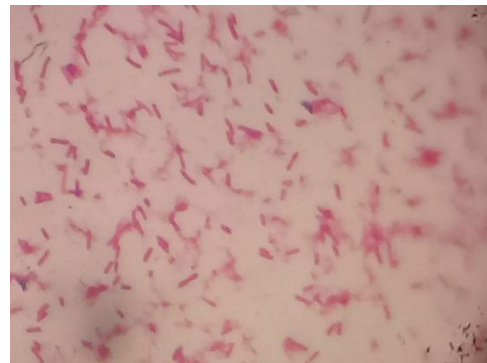
Menimbang bahan pakan penelitian



Pemeliharaan masa brooding dan setelah dipindahkan kedalam kandang



Pengambilan sample usus ayam kampung super (Bahan penelitian)



Proses pernghitungan jumlah koloni bakteri *E. coli*

