

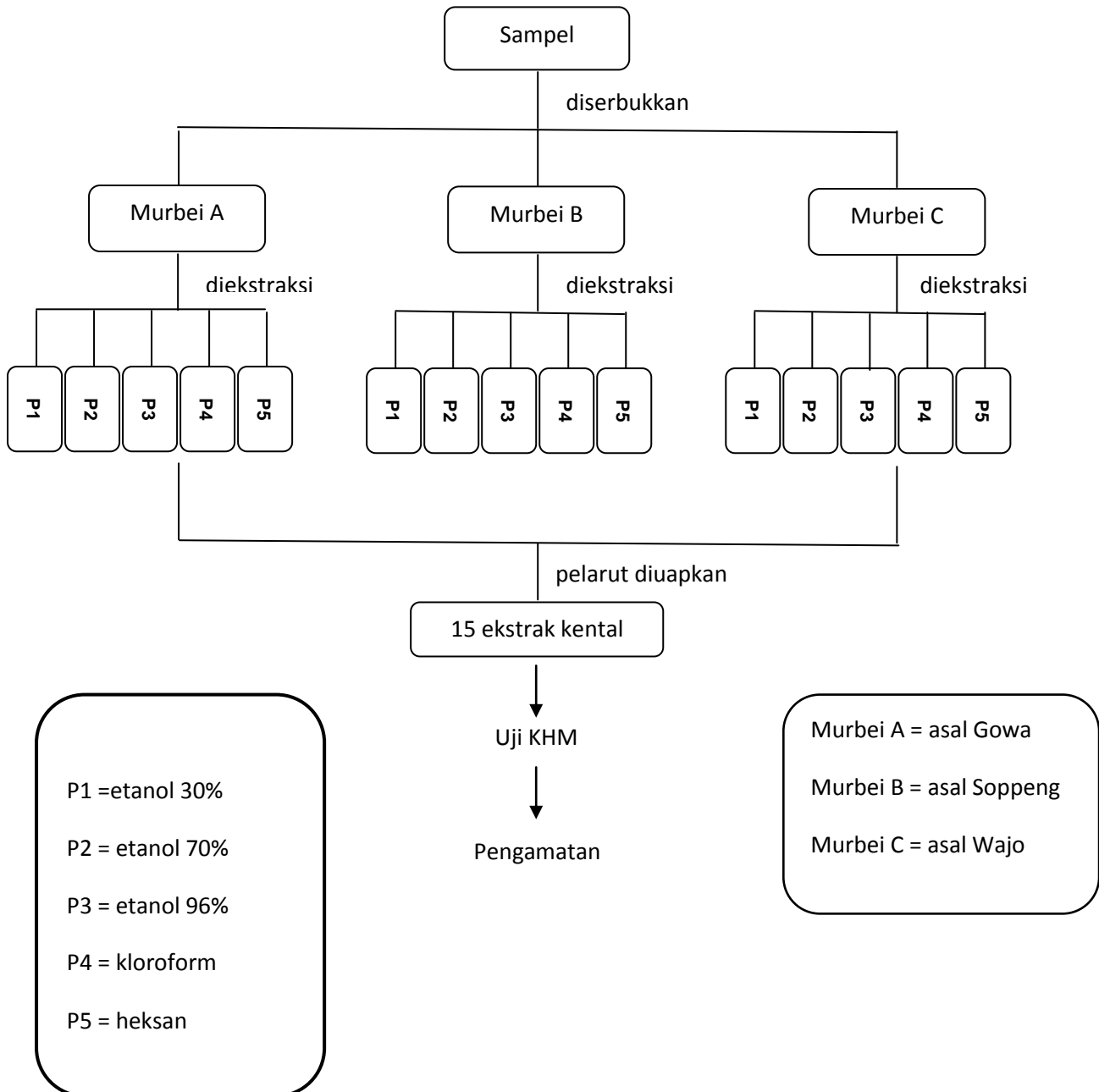
DAFTAR PUSTAKA

1. Setiawan, W. Aktivitas Antibakteri Ekstrak Etanol Batang Pepaya (*Carica papaya* L) terhadap *Staphylococcus aureus* dan *Escherichia coli* Multiresistensi Antibiotik. Skripsi. Fakultas Farmasi Universitas Muhammadiyah Surakarta. Surakarta. 2009. hal. 1-3
2. Abdulla MA, Ali HM, Ahmed KAA, Noor SM & Ismai S. Evaluation of The Anti-Ulcer Activities of *Morus alba* Extracts in Experimentally-Induced Gastric Ulcer in Rats. *Biomedical Research*. 2009; 20 (1). pp: 35-9.
3. Islam B, Khan SN, Haque I, Alam M, Mushfiq M, Khan AU. Novel Anti-adherence activity of mulberry leaves: inhibition of *Streptococcus mutans* Biofilm by 1-Deoxynojirimycin Isolated from *Morus alba*. [*Journal of Antimicrobial Chemotherapy*](#). 2008; 62 (4). pp: 751-7.
4. AC Manjula, Shubha. Screening of Antibacterial of Total Soluble Protein of Mulberry Varieties. *International Journal of Current Pharmaceutical Research*. 2011; 3 (2). pp: 60-1.
5. Sethuramani A, Devi P, jaslin Edward, Meera R, Kameswari B. Pharmacognostical and Preliminary Phytochemical Investigation on The Leaves of *Morus alba* Linn. *Journal of Pharmaceeutical Sciences and Research*. 2010; 2(8). pp: 513-7.
6. Arbianti R, Utami TS, Hermansyah H, Widyasari A. Ekstraksi Daun Sambhoto dengan Metode Sonikasi dan Pengaruhnya pada Kenaikan Indeks Bias dan Daya Hambat Pertumbuhan Bakteri *Staphylococcus aureus*. *Jurnal Teknologi Proses*. 2008; 7 (2). hal: 161-6.
7. Hariyati, S. Standardisasi Ekstrak Tumbuhan, Salah Satu Tahapan Penting dalam Pengembangan Obat Asli Indonesia. Info POM. [serial on internet]. Juli 2005 [dikutip 4 November 2011]; Vol.6 no.4.[12 screen]. Available from: [http://perpustakaan.pom.go.id/KoleksiLainnya / Buletin %20Info%20POM/0405.pdf](http://perpustakaan.pom.go.id/KoleksiLainnya/Buletin%20Info%20POM/0405.pdf)
8. Tjitrosoepomo, G. *Taksonomi Tumbuhan (Spermatophyta)*. Cetakan II. Gadjah Mada University Press. Yogyakarta. 1989. hal. 111-2.
9. Doi K, Kojima T, Makino M, Kimura Y and Fujimoto Y. Studies on The Constituents of The Leaves of *Morus alba* L. *Chem. Pharm. Bull*. 2001. 49, hal.151-53.

10. Kalantari H., Nasrin Aghel dan Maryam. *Hepatoprotective effect of Morus Alba L.* Saudi Pharmaceutical Journal. Vol. 17. No. 1. January 2009.
11. Direktorat Jenderal Pengawasan Obat dan Makanan. *Farmakope Indonesia*. Edisi III. Departemen Kesehatan Republik Indonesia. Jakarta. 1979. hal. 9.
12. Direktorat Jenderal Pengawasan Obat dan Makanan. *Sediaan Galenik*. Departemen Kesehatan Republik Indonesia. Jakarta. 1986. hal. 2,7, 10, 32.
13. Saifuddin A, Rahayu V, dan Teruna HY. *Standardisasi bahan obat alam*. Edisi I. Graha Ilmu. Yogyakarta. 2010. hal. 4, 15.
14. Hermawan, A., Hana, W., dan Wiwiek, T. 2007. Pengaruh Ekstrak Daun Sirih (Piper betle L.) Terhadap Pertumbuhan Staphylococcus aureus dan Escherichia coli dengan Metode Difusi Disk. Universitas Erlangga.
15. Wattimena, JR, dkk., "Farmakodinamik dan Terapi Antibiotik", UGM, Yogyakarta, 1981. hlm : 1-2, 19-30, 60-62, 308-313
16. Volk WA dan Wheeler MF. *Mikrobiologi Dasar*, Jilid I. Terjemahan oleh Soenartono Adisoemarto. Erlangga. Jakarta. 1993. pp. 43-47
17. Buchanan RE dan Gibbons NE. *Bergey's Manual of Determinative Bacteriology*. 8th ed. The Williams and Wilkins Company. Baltimore. 1974. pp. 290,292.
18. Pelczar MJ dan Chan ECS. *Dasar-Dasar Mikrobiologi*, Jilid 2, Terjemahan oleh Hadioetomo R.S. Universitas Indonesia Press. Jakarta. 1988
19. Brooks GF; Butel SJ; dan Morse SA. *Mikrobiologi Kedokteran*. Terjemahan oleh Bagian Farmakologi FK-UNAIR. 2005. Penerbit Salemba Medika. Jakarta. 2001. pp. 224,235
20. Andrews, JM. Penentuan Konsentrasi Hambat Minimum. *Journal of Antimicrobial Chemotherapy* 48 (Suppl. 1):5-16.
21. Widodo H, Subositi D, Supriyati N. Pengaruh Jenis Tanah terhadap Produksi Artemisinin Tanaman *Artemesia anua L.* *Simposium Penelitian Bahan Obat Alami*. 2011. XV. hal. 78, 80.
22. Ming LZ, Ying WH, Shuang Z. Analysis of Active Components of Hexan Extractives of *Morus alba* Leaves. *China Journal of Chinese Materia Medica*. 2011.

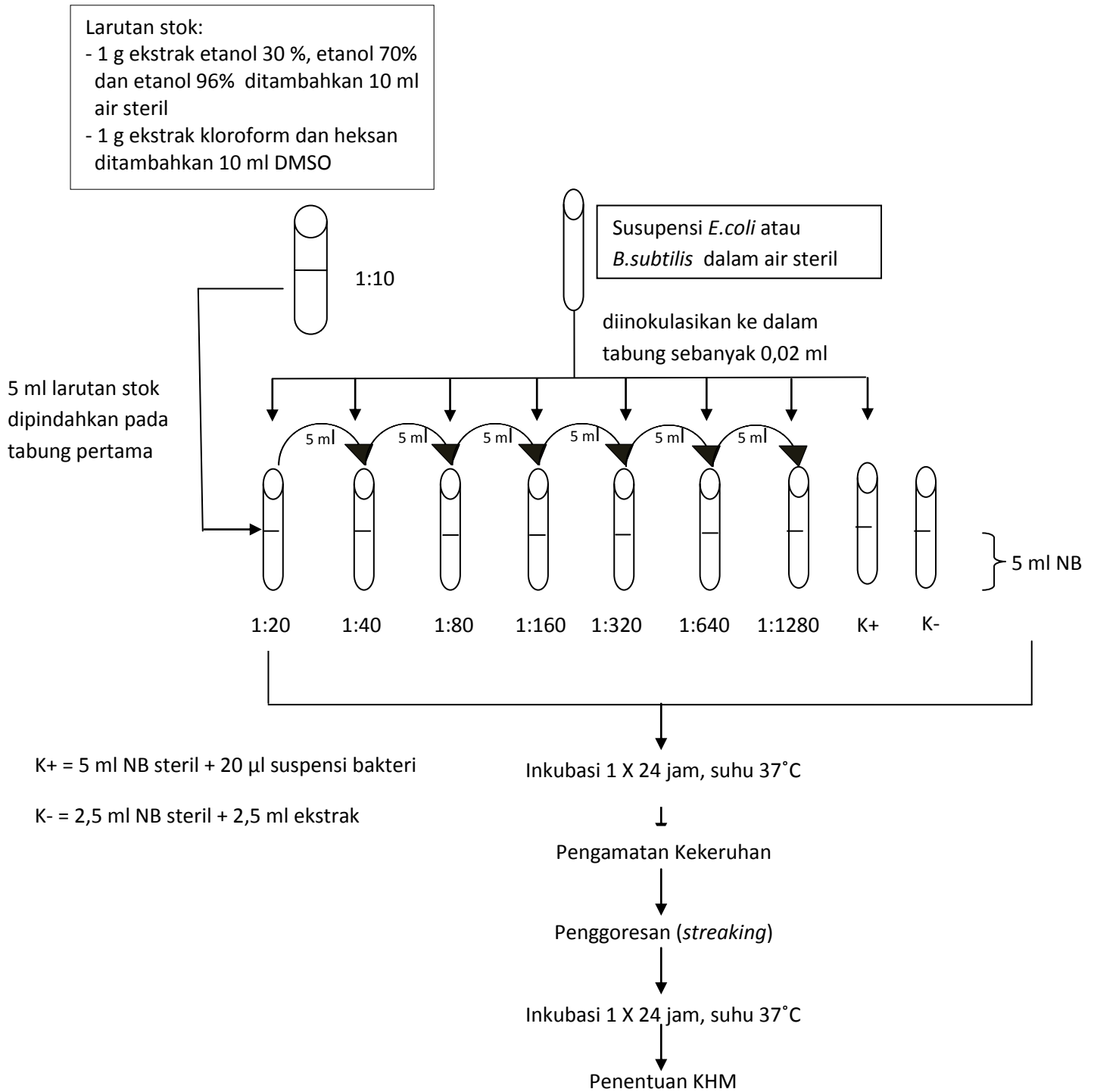
LAMPIRAN I

Skema Kerja Penelitian



LAMPIRAN II

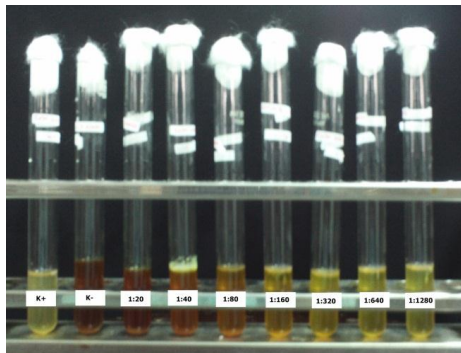
Skema Kerja Uji Konsentrasi Hambat Minimum



LAMPIRAN III

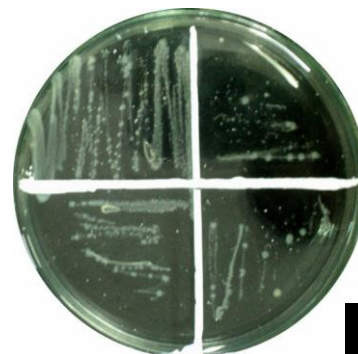
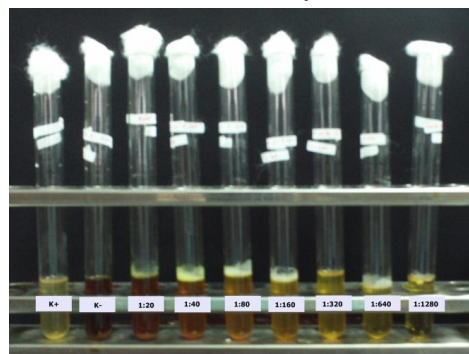
Foto Hasil Uji KHM Berbagai Ekstrak Daun Murbei (*Morus alba* L.)

1. Ekstrak Etanol 30%



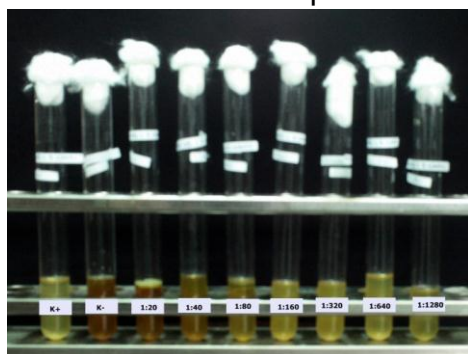
Pengenceran
1:20

Gambar 4a. Uji KHM dan hasil gores ekstrak etanol 30% asal Gowa terhadap *B. subtilis*.



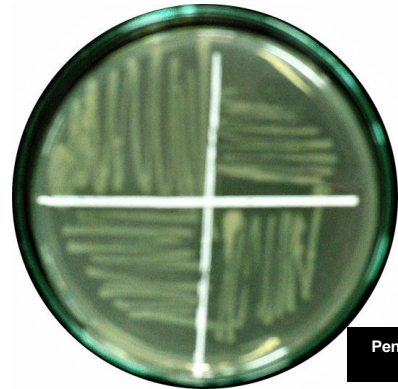
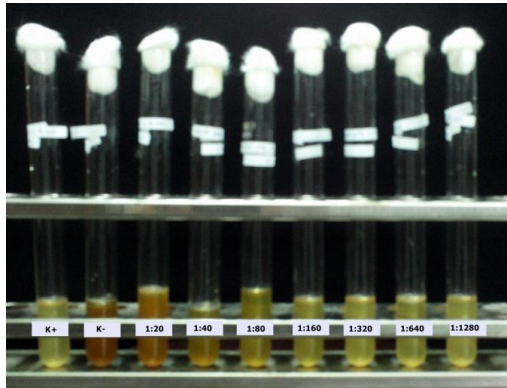
Pengenceran
1:20

Gambar 4b. Uji KHM dan hasil gores ekstrak etanol 30% asal Gowa terhadap *E. coli*.



Pengenceran
1:20

Gambar 4c. Uji KHM dan hasil gores ekstrak etanol 30% asal Soppeng terhadap *B. subtilis*.



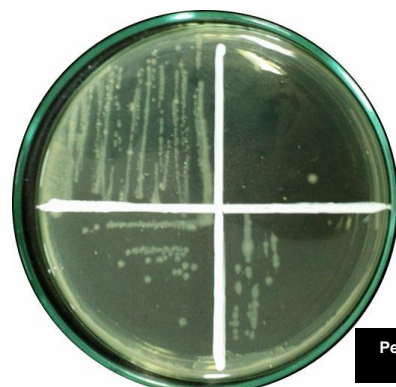
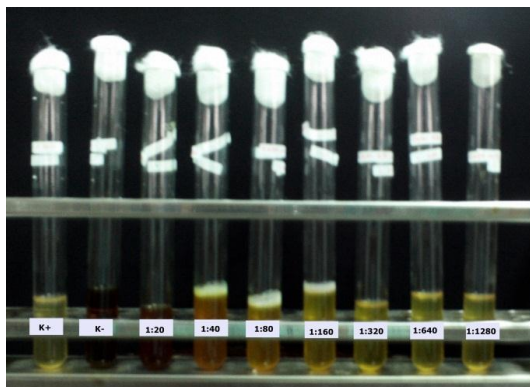
Pengenceran
1:20

Gambar 4d. Uji KHM dan hasil gores ekstrak etanol 30% asal Soppeng terhadap *E.coli*.



Pengenceran
1:20

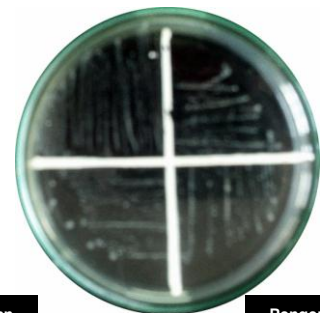
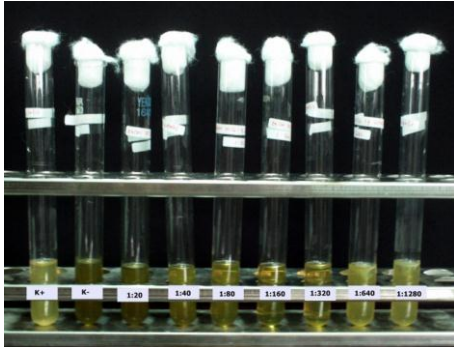
Gambar 4e. Uji KHM dan hasil gores ekstrak etanol 30% asal Wajo terhadap *B. subtilis*.



Pengenceran
1:20

Gambar 4f. Uji KHM dan hasil gores ekstrak etanol 30% asal Wajo terhadap *E.coli*.

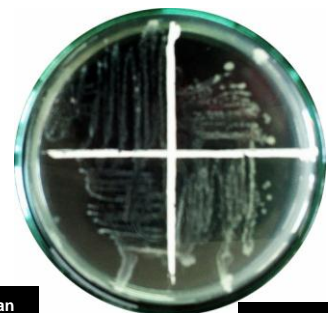
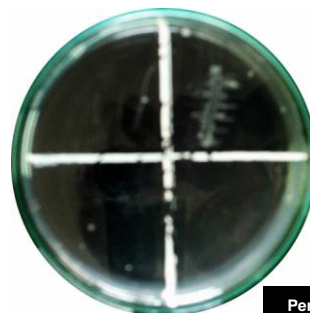
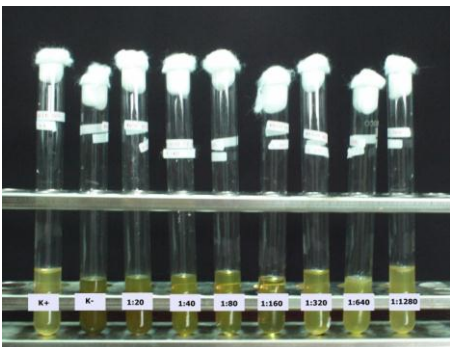
2. Ekstrak Etanol 70%



Gambar 5a. Uji KHM dan hasil

gores ekstrak etanol 70% asal Gowa

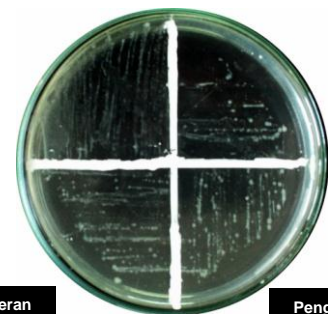
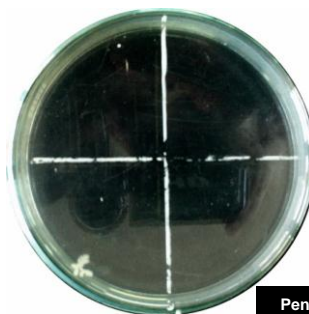
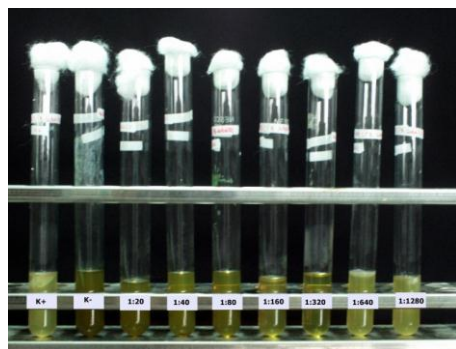
terhadap *B. subtilis*.



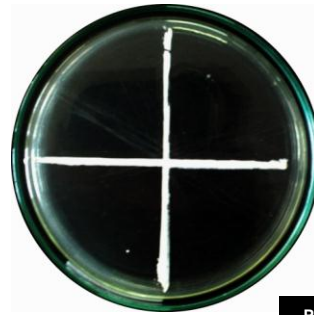
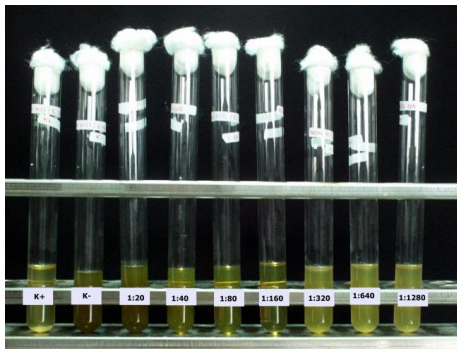
Gambar 5b. Uji KHM dan hasil

gores ekstrak etanol 70% asal Gowa

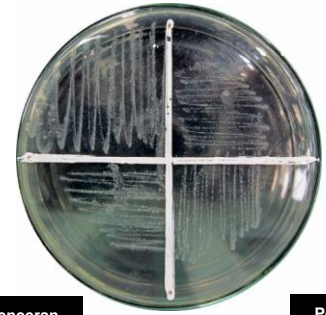
terhadap *E.coli*.



Gambar 5c. Uji KHM dan hasil gores ekstrak etanol 70% asal Soppeng terhadap *B. subtilis*.

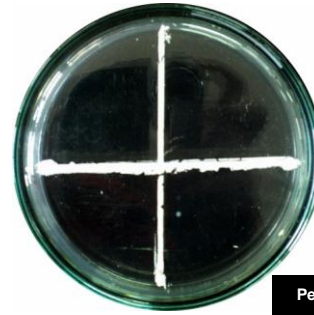
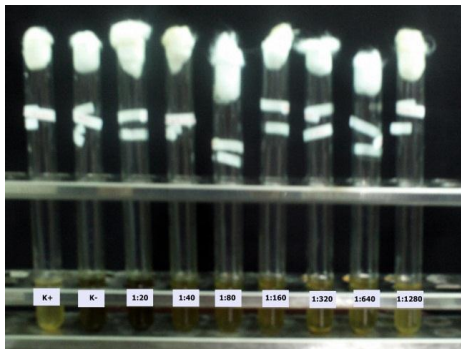


Pengenceran 1:20

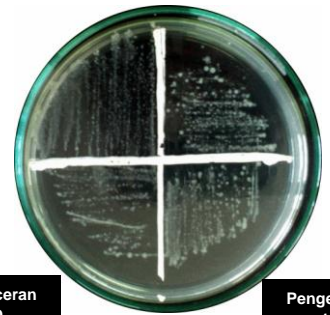


Pengenceran 1:40

Gambar 5d. Uji KHM dan hasil gores ekstrak etanol 70% asal Soppeng terhadap *E.coli*.

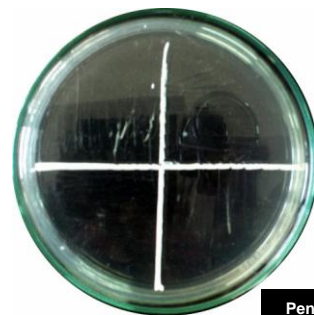
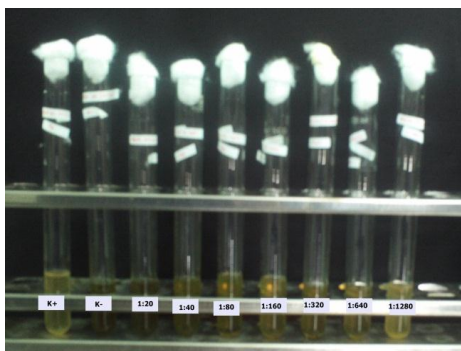


Pengenceran 1:20

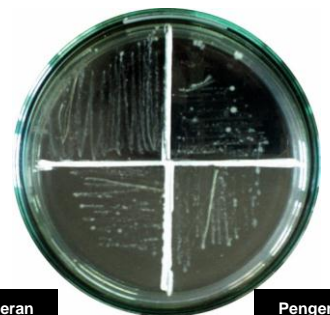


Pengenceran 1:40

Gambar 5e. Uji KHM dan hasil gores ekstrak etanol 70% asal Wajo terhadap *B. subtilis*.



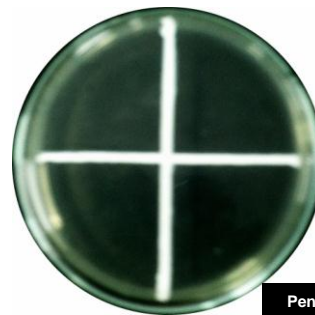
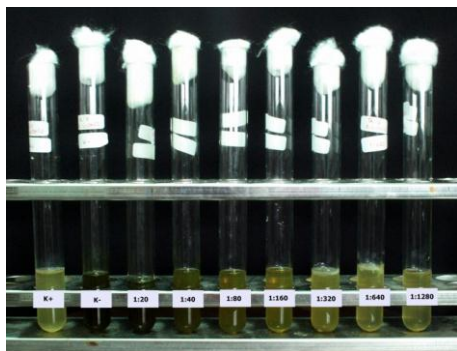
Pengenceran 1:40



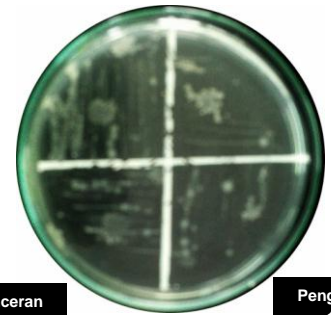
Pengenceran 1:80

Gambar 5f. Uji KHM dan hasil gores ekstrak etanol 70% asal Wajo terhadap *E.coli*.

3. Ekstrak Etanol 96%



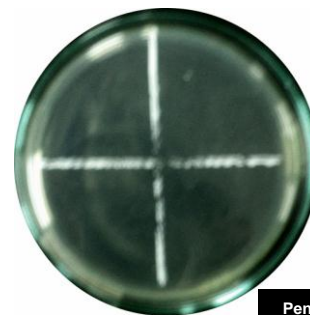
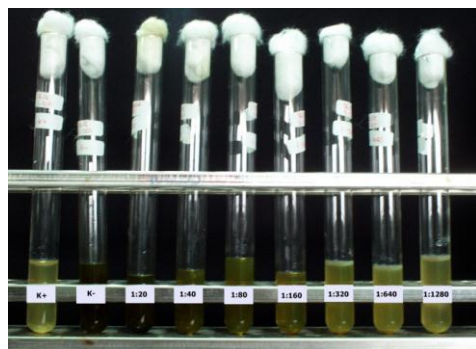
Pengenceran 1:80



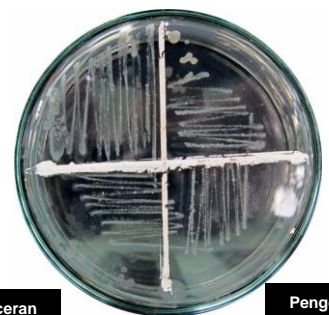
Pengenceran 1:160

Gambar 6a. Uji KHM dan hasil terhadap *B. subtilis*.

gores ekstrak etanol 96% asal Gowa



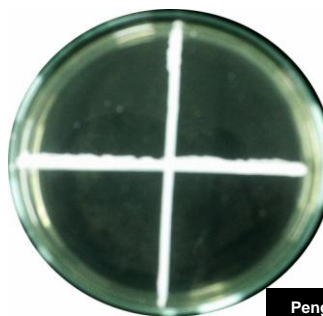
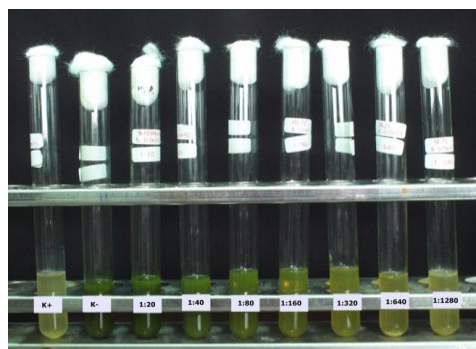
Pengenceran 1:80



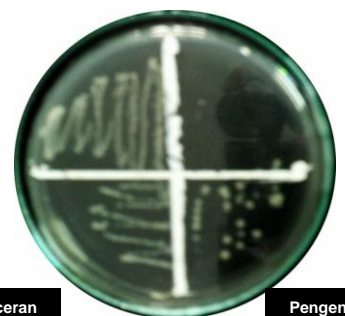
Pengenceran 1:160

Gambar 6b. Uji KHM dan hasil terhadap *E. coli*.

gores ekstrak etanol 96% asal Gowa



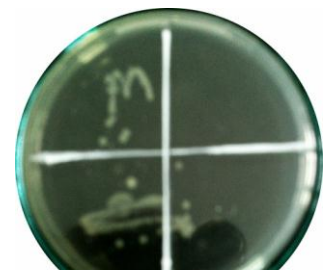
Pengenceran 1:80



Pengenceran 1:160

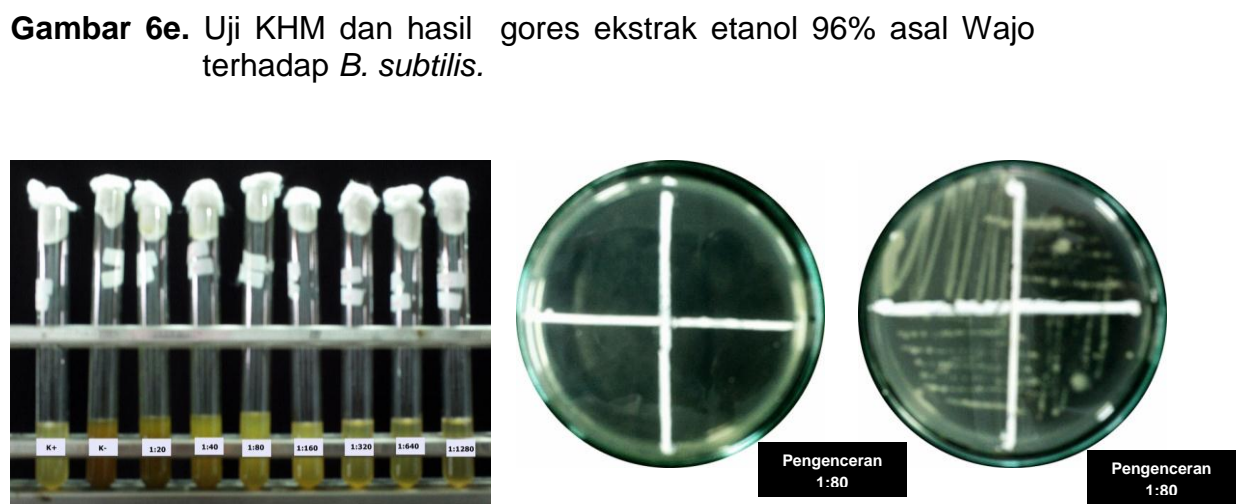
Gambar 6c. Uji KHM dan hasil terhadap *B. subtilis*.

gores ekstrak etanol 96% asal Soppeng

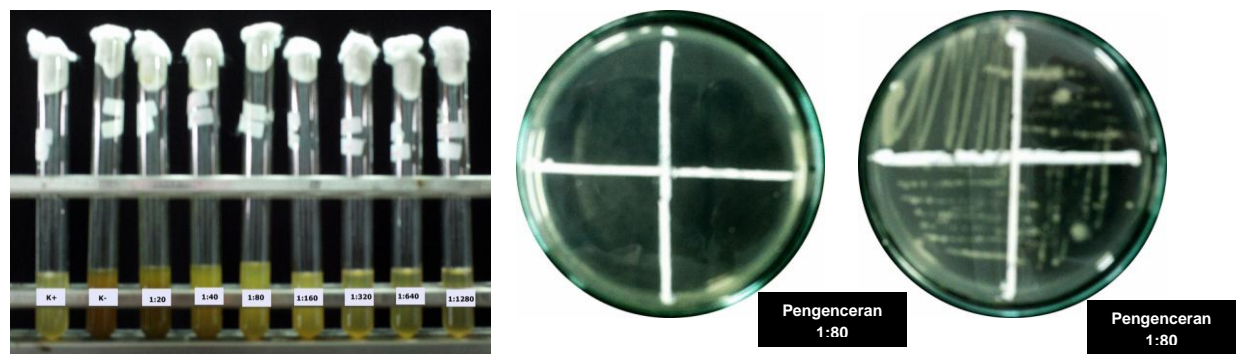




Gambar 6d. Uji KHM dan hasil gores ekstrak etanol 96% asal Soppeng terhadap *E.coli*.

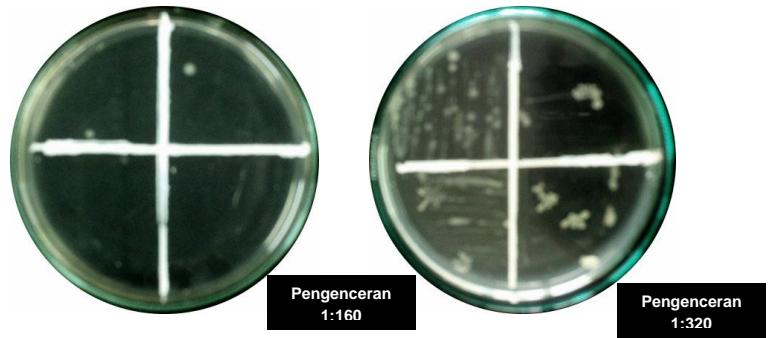


Gambar 6e. Uji KHM dan hasil gores ekstrak etanol 96% asal Wajo terhadap *B. subtilis*.

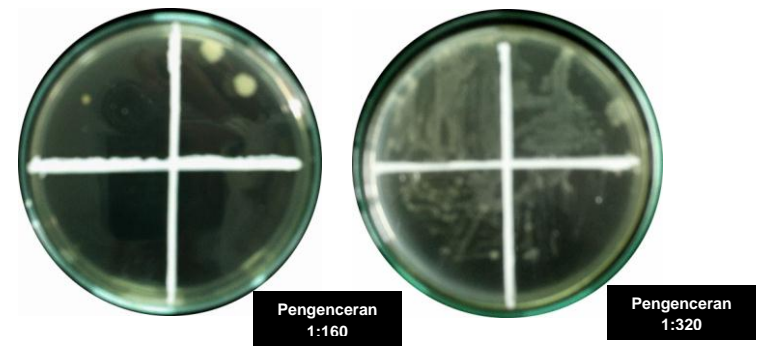
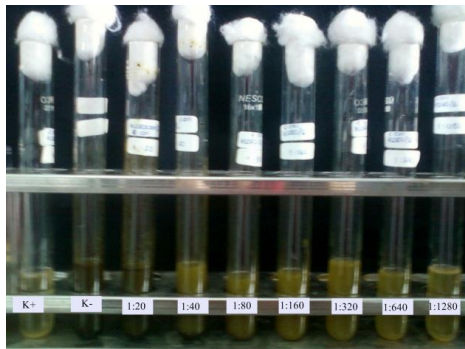


Gambar 6f. Uji KHM dan hasil gores ekstrak etanol 96% asal Wajo terhadap *E.coli*.

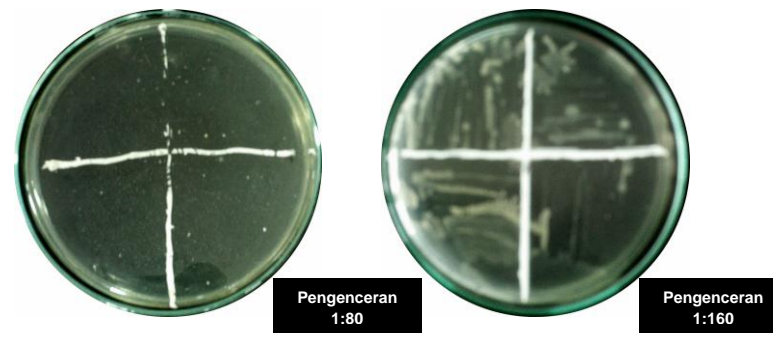
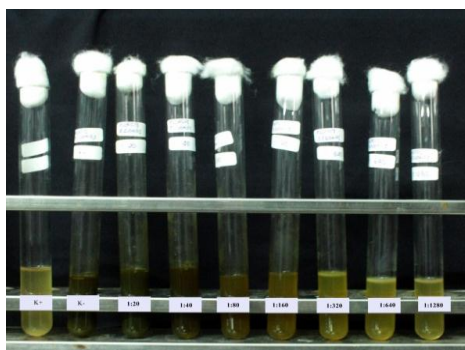
4. Ekstrak Kloroform



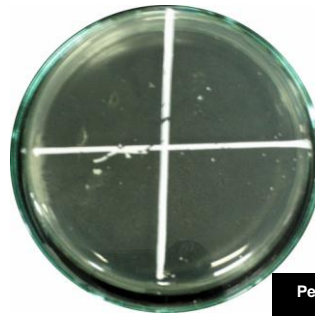
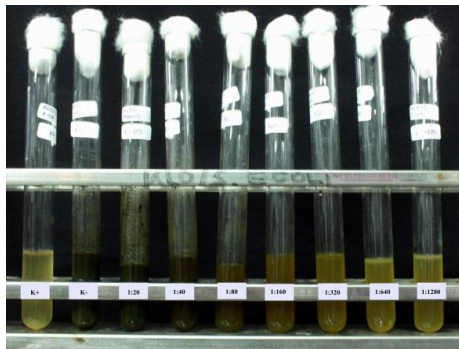
Gambar 7a. Uji KHM dan hasil gores ekstrak kloroform asal Gowa terhadap *B. subtilis*.



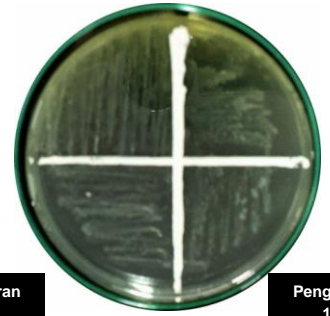
Gambar 7b. Uji KHM dan hasil gores ekstrak kloroform asal Gowa terhadap *E.coli*.



Gambar 7c. Uji KHM dan hasil gores ekstrak kloroform asal Soppeng terhadap *B. subtilis*.

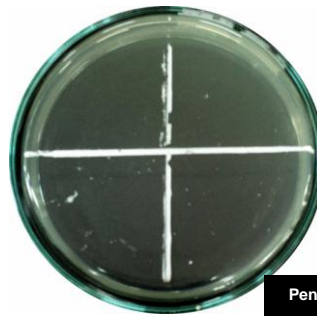
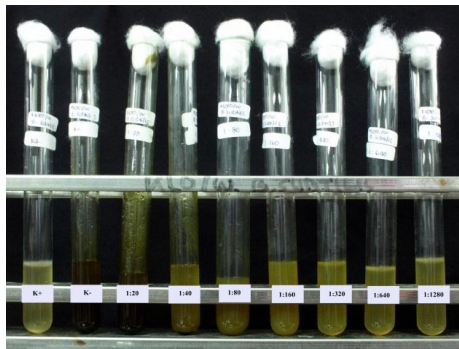


Pengenceran
1:160

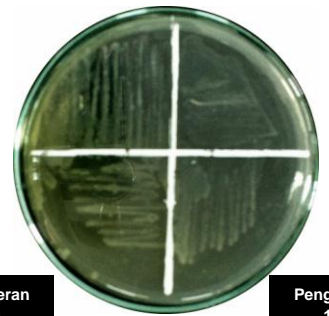


Pengenceran
1:320

Gambar 7d. Uji KHM dan hasil gores ekstrak kloroform asal Soppeng terhadap *E.coli*.

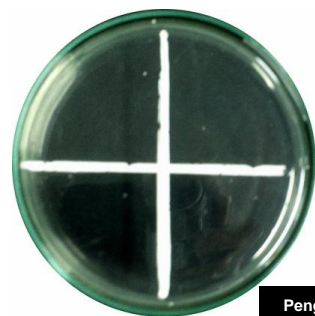
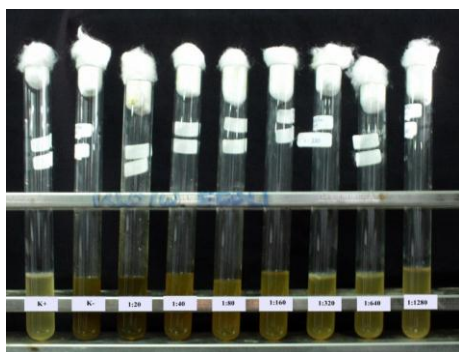


Pengenceran
1:160

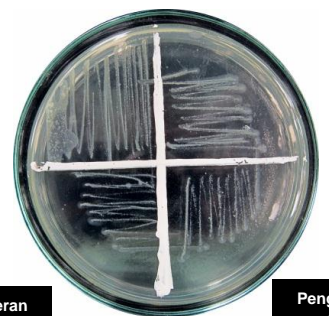


Pengenceran
1:320

Gambar 7e. Uji KHM dan hasil gores ekstrak kloroform asal Wajo terhadap *B. subtilis*.



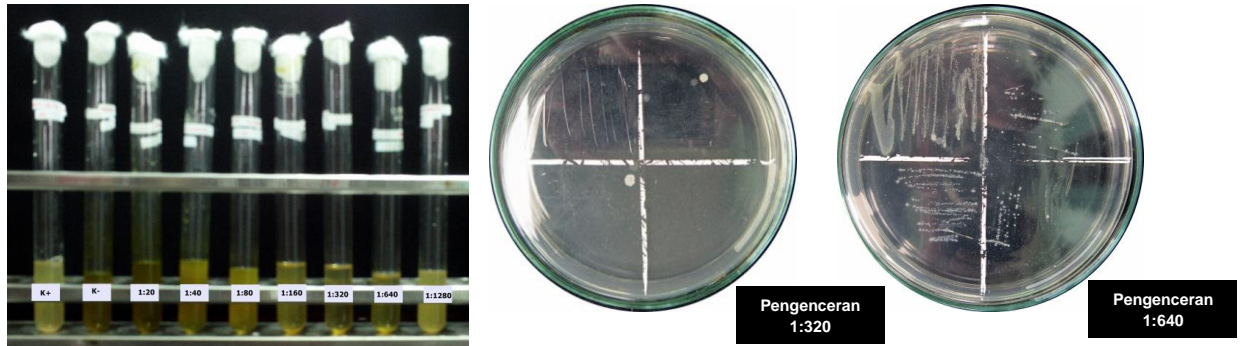
Pengenceran
1:160



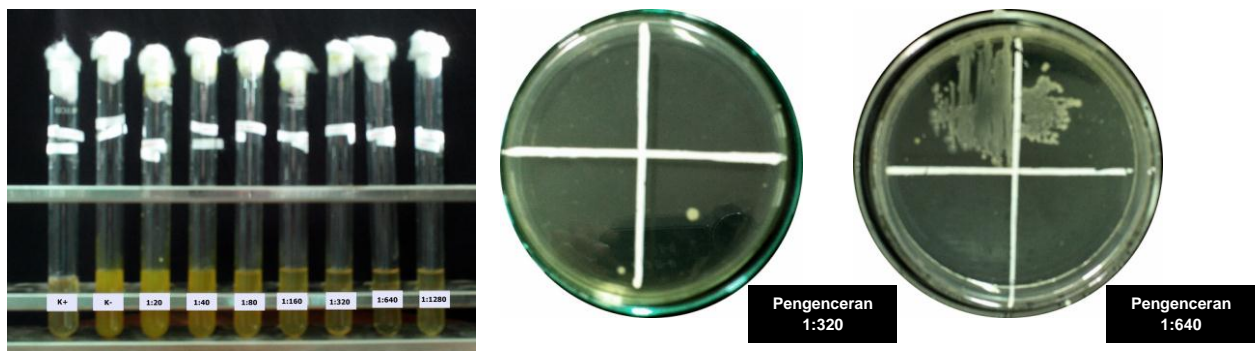
Pengenceran
1:320

Gambar 7f. Uji KHM dan hasil gores ekstrak kloroform asal Wajo terhadap *E.coli*.

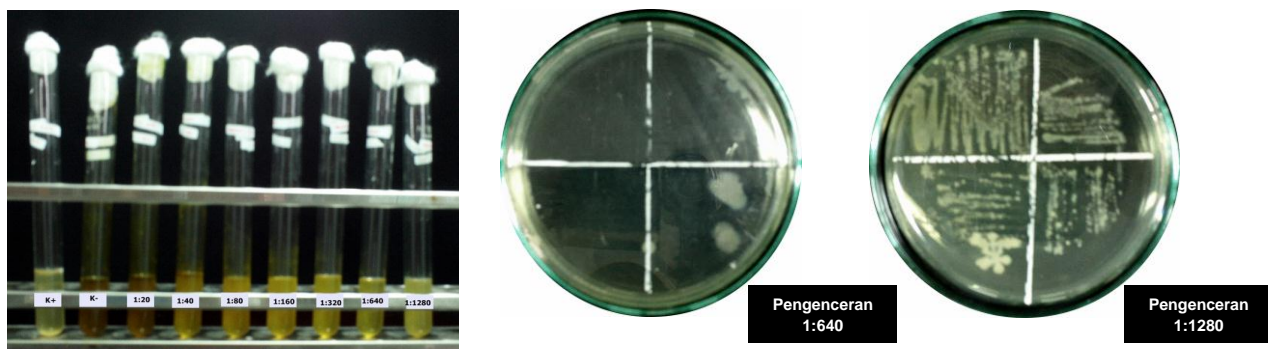
5. Ekstrak Heksan



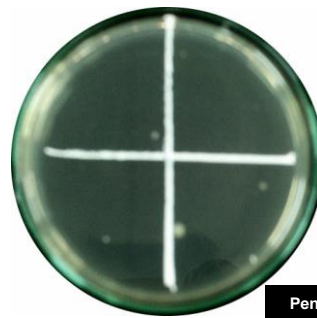
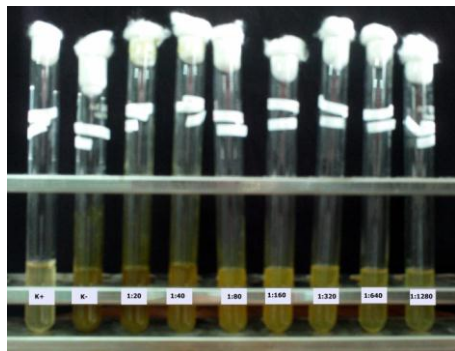
Gambar 8a. Uji KHM dan hasil gores ekstrak heksan asal Gowa terhadap *B. subtilis*.



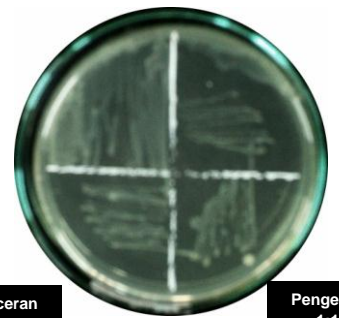
Gambar 8b. Uji KHM dan hasil gores ekstrak heksan asal Gowa terhadap *E. coli*.



Gambar 8c. Uji KHM dan hasil gores ekstrak heksan asal Soppeng terhadap *B. subtilis*.

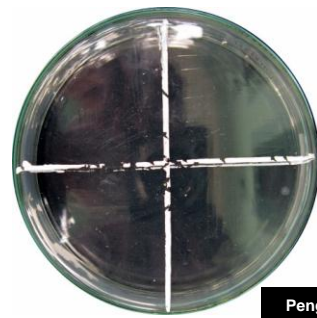
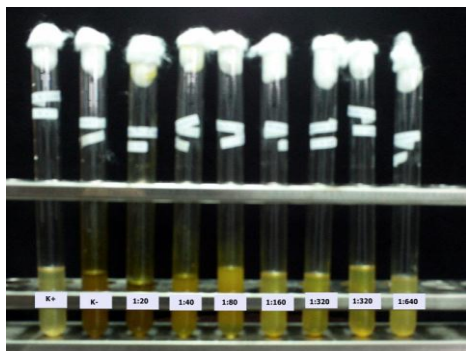


Pengenceran
1:640

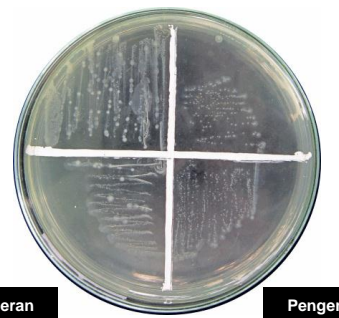


Pengenceran
1:1280

Gambar 8d. Uji KHM dan hasil gores ekstrak heksan asal Soppeng terhadap *E.coli*.

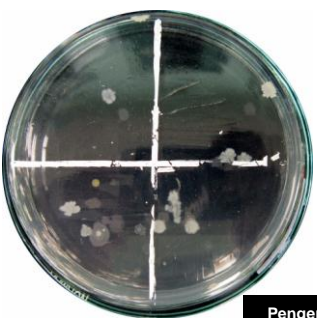
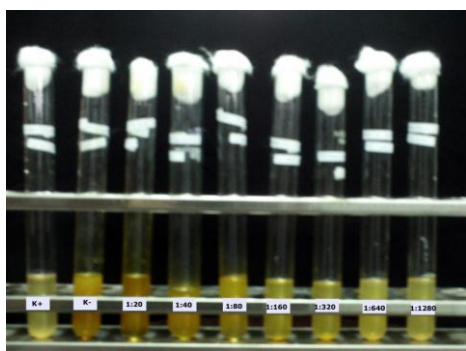


Pengenceran
1:320



Pengenceran
1:640

Gambar 8e. Uji KHM dan hasil gores ekstrak heksan asal Wajo terhadap *B. subtilis*.



Pengenceran
1:640



Pengenceran
1:1280

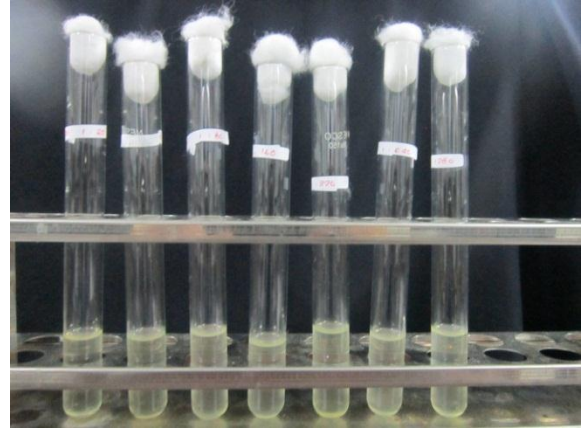
Gambar 8f. Uji KHM dan hasil gores ekstrak heksan asal Wajo terhadap *E.coli*.

LAMPIRAN IV

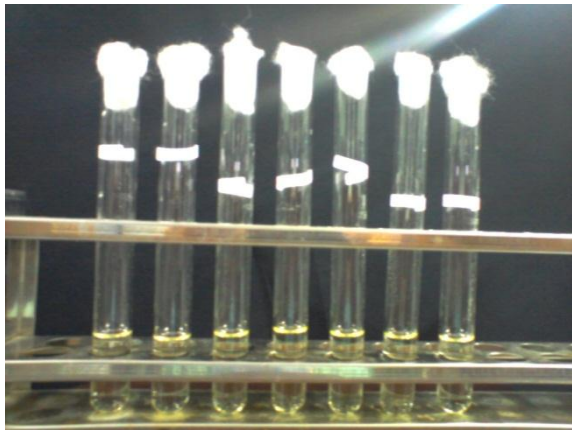
Foto Pengaruh DMSO terhadap Pertumbuhan Bakteri Uji



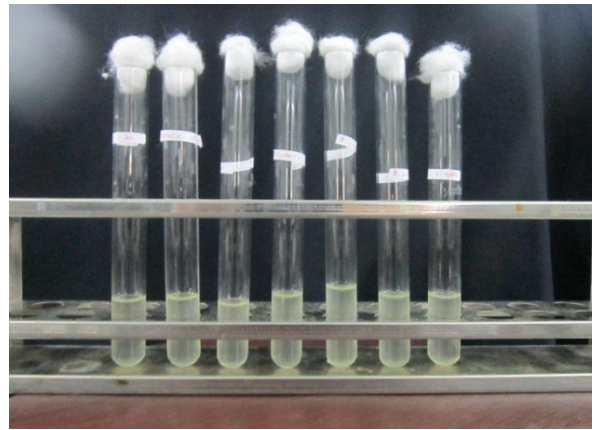
Gambar 9a. DMSO+NB+*E.coli* sebelum inkubasi



Gambar 9b. DMSO+NB+*E.coli* setelah inkubasi



Gambar 10a. DMSO+NB+*B.subtilis* sebelum inkubasi



Gambar 10b. DMSO+NB+*B.subtilis* setelah inkubasi

