

## DAFTAR PUSTAKA

1. Japaries, W. Karsinoma Pankreas. Dalam Buku Ajar Onkologi Klinis. Edisi Kedua. Jakarta. Balai Penerbit FK UI.2008: Hal 442-9
2. Mayer, J.R. Pancreatic Cancer. In: Kasper L, Denis *et al.* Harri-son's Principles of Internal Medicine .16<sup>th</sup> Edition. United States of America: McGraww Hill Companies, Inc. 2005; Chapter 79.Hal 446
3. Castillo, C.F., Jimenez.,Ramon, E. Pancreatic cancer. In: Feldman, M.,Friedman,L.S.,Brandt,L.J. Sleisenger & Fordtran's Gastro-intestinal and Liver Disease. 8<sup>th</sup> edition. Philadelphia. Elsevier, Inc. 2006. Chapter 58.Hal 3178
4. Padmomarono, F.S. Kanker Pankreas. In: Sudoyo, A.W dkk. Buku Ajar Ilmu Penyakit Dalam. Edisi Keempat. Jakarta: Interna Publishing. 2006; Hal 492-6
5. Lindseth, N.G. Gangguan hati, Kandung Empedu, dan Pankreas. In: Price, Sylvia A., Wilson, Lorraine M. Patofisiologi Edisi 6 Volume 1. Jakarta. Penerbit EGC. 2003; Hal 507-8
6. Hariharan, D., Saied, A., Kocher, H. Analysis of mortality rates for pancreatic cancer across the world. The Official Journal of the International Hepato Pancreato Biliary Association. Blackwell Publishing. Available from [www.ncbi.nlm.nih.gov](http://www.ncbi.nlm.nih.gov), updated december 20, 2007. Hal 58-62
7. Kim, M., Miyamoto, S., Yasui.Y., Oyama, T ., Murakami, A., Tanaka, T. Zerumbone, a tropical ginger sesquiterpene, inhibits colon and lung carcinogenesis in mice. *International Journal of Cancer*. 2009; 124 (2):Hal 264–271
8. Hasoya,T .,*et al.* “naturally Occurring Small Molecule Inhibitors of Hedgehog / GLI-Mediated transcription. *Chembiochem*, Vol.9,2008, Hal 1082-1092
9. Rubin, L.L. de Sanvage, F.J.Nat. Rev.Drug Disc.2006.5.Hal 1026
10. Rifai, Y ., *et al.* “A New Method For fast Isolation of GLI Inhibitory Compounds”. *international journal of pharma research and review*.2012(8). Hal 28-30
11. Rifai, Y., Aswad, M., Subehan, “ A New lignin From *Piper nigrum*\_fruit”, Accepted in : *International Journal of Chemical and analytical Science*, will be published on November 2012.

12. Kitayama, T., *et al.* The Chemistry of Zerumbone IV Asymmetric Synthesis of Zerumbol. *Journal of Molecular Catalysis B: Enzymatic* Volume 17. Hal 75-79
13. Takada, Y., Murakami, A., Aggarwal, B.B. Zerumbone abolishes NF- $\kappa$ B dan I $\kappa$ B $\alpha$  kinase activation leading to suppression of antiapoptotic dan metastatic gene expression, upregulation of apoptosis, and down regulation of invasion oncogene. 2005; Hal. 6957-6969
14. Prakash, R.O., Rabinarayan, A., Kumar, M.S. *Zingiber zerumbet* (L.) Sm., a reservoir plant for therapeutic uses. *IJPWR*. 2011 Mar-Jun. 2 (2); Hal 1-23
15. Guyton, A.C. *Textbook of Medical Physiology* 5<sup>th</sup> Edition. WB Saunders Company: Philadelphia. London. 1976. Hal 625-627
16. Gibson, J. *Modern Physiology and Anatomy for Nurses*. Blackwell Science Limited: Oxford. Chapter 19. 1981. Hal 241-247
17. Sundler, F., Hakanson, R. Peptide hormone producing endocrine or paracrine cell in the gastro- entero-pancreatic region. In : *Handbook of Chemical Neuroanatomy*. Vol.6: The Peripheral Nervous System. A Bjorklund, T. Hokfelt and C. Owman (eds). *Elsevier Science Publishers BV*. 1988. Hal 579-591
18. Meyer, B.N. Brine Shrimp : A Convenient General Bioassay for Active Plant Constituent. *Drug Infor J*. 1982. Vol. 32. Hal 513-524
19. Lewis, H.W., Lewis, E.M. "Medical Botany: Plants Affecting Man's Health". John Wiley & Sons, Inc. United States of America. 1997. Hal. 341
20. Bustan, M.N. "Epidemiologi Penyakit Tidak Menular". Rikena Cipta. Jakarta. 1999. Hal 234
21. Desen, W. *Buku Ajar Onkologi Klinis edisi 2*, Balai Penerbit FKUI, Jakarta. Hal 442-444
22. Abraham, J., Allegra, C. *Bethesda Handbook of Clinical Oncology*. Lippincott, Williams & Wilkins, New York. 2001. Hal 375-386
23. Bergamaschi, D., Samuels, Y., Jin, B., Puraisingham, S., Crook, T., Lu, X. ASPP1 dan ASPP2: Common Activators of p53 Family Members, *Mol Cell Biol*. 2004. Chapter 24. Hal 1341 – 1350

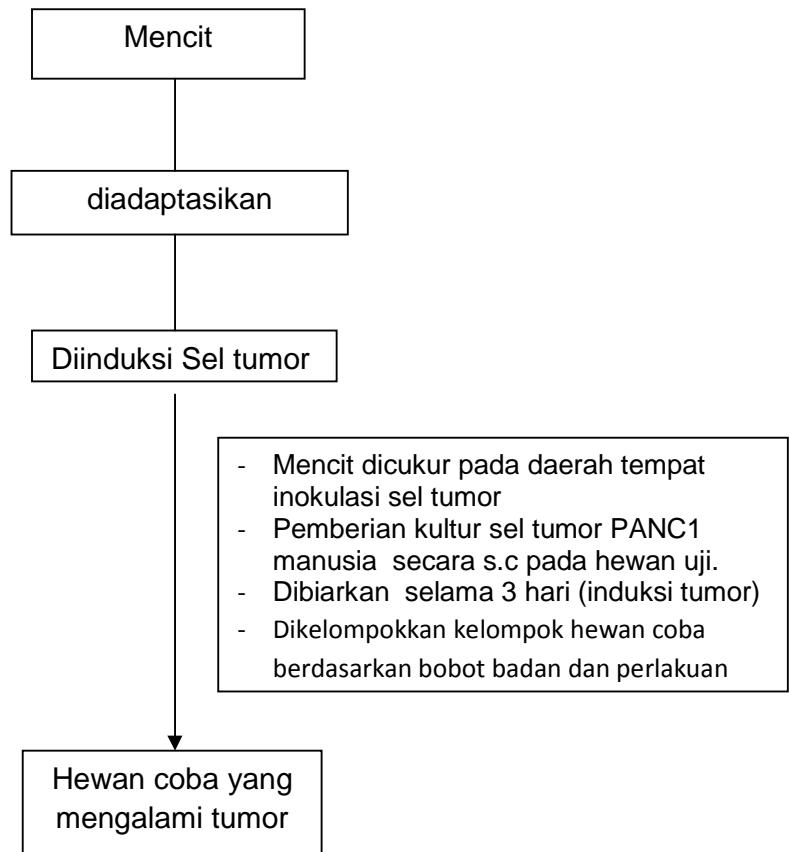
24. Masfarlane, M., Williams, A.C. Apoptosis and Disease: A Life or Death Decision, *EMBO Rep.* 2004. Hal 674 – 678
25. Raff, M., 1998, Cell Suicide for Beginners, *Nature*, 396:Hal 119-122
26. Sahakira, H., Enari, M., Nagata,S. Cleavage of CAD Inhibitor in CAD Activation and DNA Degradation During Apoptosis, *Nature*.1999. 391 (6662). Hal 96-99
27. Povlsen, C.O., Rygaard, J: Heterotransplantation of human epidermoid carcinomas to the mouse mutant nude. *Acta Pathol Microbiol Scand*.1972. 80(6): Hal 713-7
28. Steel, G.G., Courtenay, V.D., Peckham, M.J: The response to chemo-therapy of a variety of human tumour xenografts. *Br J Cancer* .1983. 47(1):Hal 1-13
29. Fiebig, H.H., Maier,A., Burger, A.M. Clonogenic assay with establish-ed human tumour xenografts: correlation of in vitro to in vivo activity as a basis for anticancer drug discovery. *Eur J Cancer*. 2004. 40(6): Hal 802-20
30. Kelland, L.R. Of mice and men: values and liabilities of the athymic nude mouse model in anticancer drug development. *Eur J Cancer*. 2004. 40(6): Hal 827-36
31. Killion, J.J., Radinsky, R., Fidler, I.J. Orthotopic models are necessary to predict therapy of transplantable tumors in mice. *Cancer Metastasis Rev*.1998. 17(3):Hal 279-84
32. Suggitt, M., Bibby, M.C. 50 years of preclinical anticancer drug screening: empirical to target-driven approaches. *Clin Cancer Res*. 2005. 11(3): Hal 971-81
33. Kerbel, R.S. Human tumor xenografts as predictive preclinical models for anticancer drug activity in humans: better than commonly perceived-but they can be improved.*Cancer Biol Ther* . 2003. 2(4 Suppl 1): Hal 134-9
34. Tan, MH., Holyoke, E.D., Goldrosen, M.H. Murine colon adenocarcinoma : syngeneic orthotopic transplantation and subsequent hepatic metastases. *J Nat Cancer Inst* .1977. 59(5): Hal 1537-44

35. Bibby, M.C. Orthotopic models of cancer for preclinical drug evaluation: advantages and disadvantages. *Eur J Cancer*. 2004. 40(6): Hal 852-7
36. Fidler, I.J., Ellis, L.M. The implications of angiogenesis for the biology and therapy of cancer metastasis. 1994. 79(2): Hal 185-8
37. McMahon, A.P., Ingham, P.W., Tabin, C. "Developmental Roles and Clinical Significance of Hedgehog Signaling". *J. Curr. Top. Dev. Biol.* 2003; vol.53. Hal.1
38. Rubin, L.L., Sauvage, D.F. "Novel Hedgehog Pathway Targets Against Basal Cell Carcinoma". *J. Nat. Rev. Drug Disc.* 2006. vol.5: Hal. 1026
39. Kinzler, K.W : Vogelstein, B. *Mol. Cell. Biol.* 1990. Vol.10: Hal. 634
40. (a) Magliano. M.P.D., Hebrok, M. *Nat. Rev. Cancer* 2003.3.903 :  
(b) Jacob, L., Lum, L. *science*. 2007.318.66:(c) Taylor. M.D., Liu, L., Raffle, C., Hui, D. *Nat. Genet.* 2002. Vol.37: Hal 306
41. Adityo, S. Kajian farmakologi Molekuler : Gemcitabine sebagai induktor apoptosis pada sel kanker Pankreas. 2008. Hal 9-12
42. Malgorzata, S., Milena, S., Magdalena, J., Alina, P., Danuta, P. Biological and physicochemical characterization of siRNAs modified with 2',2'-difluoro-2'-deoxycytidine (gemcitabine). 2010. Chapter 34. Hal : 918-924
43. Leeson, C.R., Leeson, T.S., Paparo, A. *Buku Teks Histologi*. Yan Tambayong. EGC. Jakarta. 1996. Hal 161-162
44. Tambajong, J. *Sinopsis Histologi Edisi IX*. Binarupa Aksara. Jakarta. 1995. Hal 258-260
45. Hoffbrand, A.V., Peffit, J.E., Moss, H. *Kapita Selektif Hematologi Edisi 4*. EGC. Jakarta. 2005. Hal 104-108

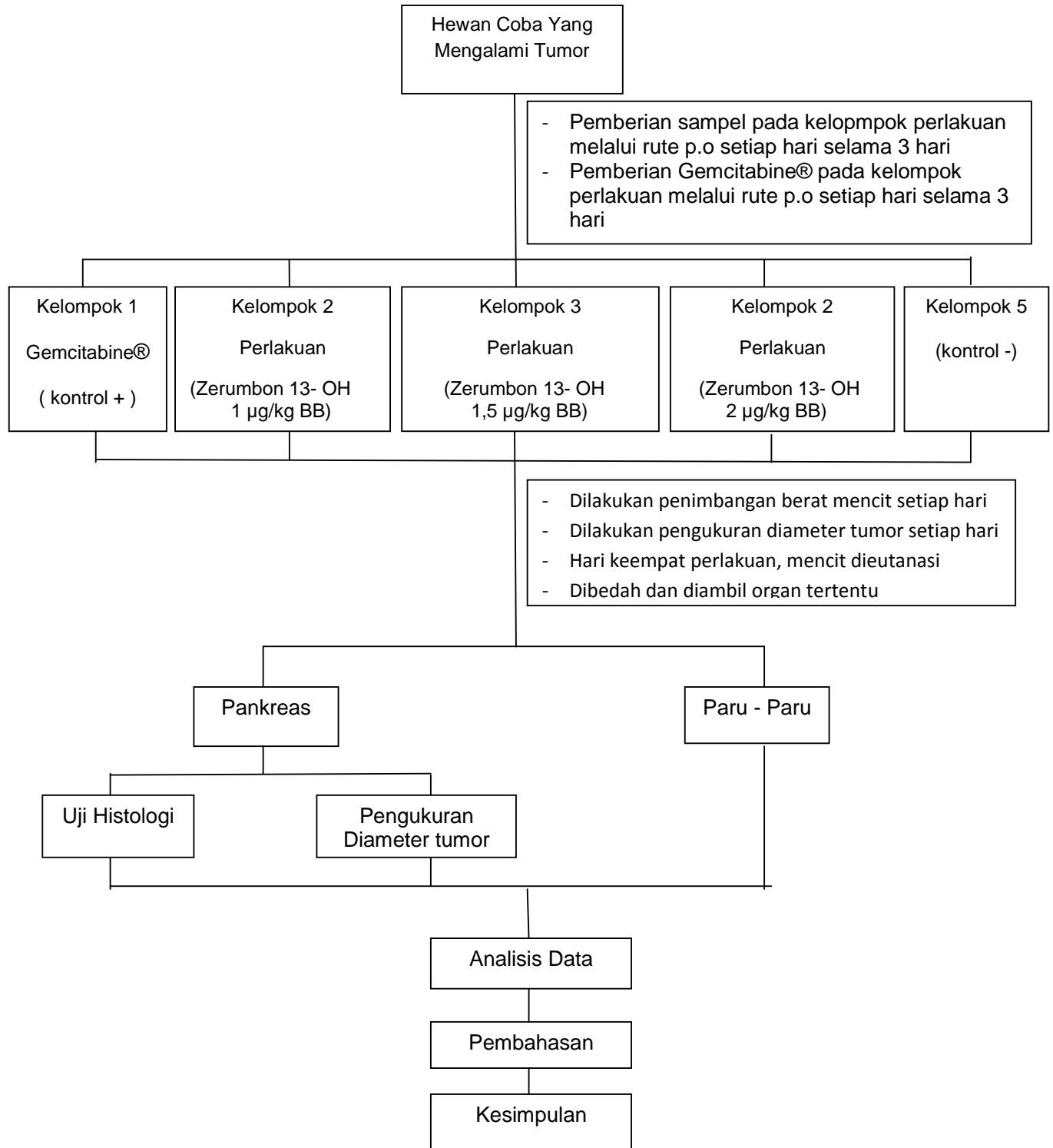
46. Cormach, D.H. Ham Histologi Edisi IX. Binarupa aksara. Jakarta. 1994. Hal 258 – 260
47. Baratawijaya, K.G. Imunologi Dasar Edisi Ke-7. Balai PenerbitFKUI. Jakarta. 2006. Hal 231,234
48. Malole, M.B.M., Pramono. Penggunaan Hewan Percobaan di Laboratorium. In: Setyadi, A.D. Organ Reproduksi dan Kualitas Sperma Mencit (*Mus musculus*) yang mendapat pakan Tambahan Kemangi (*Ocimum basilicum*) Segar. Institut Pertanian Bogor, Bogor. 1989. Hal 3-4

**LAMPIRAN I**  
**SKEMA KERJA**

**Skema Inokulasi Sel kanker PANC1**



## Skema Uji Efektifitas Derivat Zerumbon







2. BB mencit 32 g

$$\text{Konversi dosis} = 10^{-3} \text{ mg} \times 32/1000 \text{ mg} = 3,2 \times 10^{-5} \text{ mg}$$

$$\text{Volume Pemberian} = \frac{221 \times 0,000032 \text{ mg}}{0,02 \text{ mg/mL}} = 0,35 \text{ mL}$$

3. BB mencit 34 g

$$\text{Konversi dosis} = 10^{-3} \text{ mg} \times 34/1000 \text{ mg} = 3,4 \times 10^{-5} \text{ mg}$$

$$\text{Volume Pemberian} = \frac{221 \times 0,000034 \text{ mg}}{0,02 \text{ mg/mL}} = 0,37 \text{ mL}$$

- Kelompok perlakuan 2 (1,5 µg/kg BB)

1. BB mencit 24 g

$$\text{Konversi dosis} = 1,5 \cdot 10^{-3} \text{ mg} \times 24/1000 \text{ mg} = 3,6 \times 10^{-5} \text{ mg}$$

$$\text{Volume Pemberian} = \frac{221 \times 0,000036 \text{ mg}}{0,02 \text{ mg/mL}} = 0,40 \text{ mL}$$

2. BB mencit 26 g

$$\text{Konversi dosis} = 1,5 \cdot 10^{-3} \text{ mg} \times 26/1000 \text{ mg} = 3,9 \times 10^{-5} \text{ mg}$$

$$\text{Volume Pemberian} = \frac{221 \times 0,000039 \text{ mg}}{0,02 \text{ mg/mL}} = 0,43 \text{ mL}$$

3. BB mencit 28 g

$$\text{Konversi dosis} = 1,5 \cdot 10^{-3} \text{ mg} \times 28/1000 \text{ mg} = 4,2 \times 10^{-5} \text{ mg}$$

$$\text{Volume Pemberian} = \frac{221 \times 0,000042 \text{ mg}}{0,02 \text{ mg/mL}} = 0,46 \text{ mL}$$

- Kelompok perlakuan 3 (2 µg/kg BB)

1. BB mencit 33 g

$$\text{Konversi dosis} = 2 \cdot 10^{-3} \text{ mg} \times 33/1000 \text{ mg} = 6,6 \times 10^{-5} \text{ mg}$$

$$\text{Volume Pemberian} = \frac{221 \times 0,000066 \text{ mg}}{0,02 \text{ mg/mL}} = 0,72 \text{ mL}$$

2. BB mencit 30 g

$$\text{Konversi dosis} = 2 \cdot 10^{-3} \text{ mg} \times 30/1000 \text{ mg} = 6 \times 10^{-5} \text{ mg}$$

$$\text{Volume Pemberian} = \frac{221 \times 0,00006 \text{ mg}}{0,02 \text{ mg/mL}} = 0,67 \text{ mL}$$

3. BB mencit 30 g

$$\text{Konversi dosis} = 2 \cdot 10^{-3} \text{ mg} \times 30/1000 \text{ mg} = 6 \times 10^{-5} \text{ mg}$$

$$\text{Volume Pemberian} = \frac{221 \times 0,00006 \text{ mg}}{0,02 \text{ mg/mL}} = 0,67 \text{ mL}$$

**LAMPIRAN III**  
**PERHITUNGAN STATISTIK**

**Descriptives**

Perlakuan	N	Mean	Std. Deviation	Std. Error	95% Confidence Interval for Mean		Minimum	Maximum
					Lower Bound	Upper Bound		
					Zerumbone 13 –OH 1	3		
Zerumbone 13 –OH 1,5	3	0,2100	0,02646	0,01528	0,1443	0,2757	0,18	0,23
Zerumbone 13 –OH 2	3	0,2933	0,03786	0,02186	0,1993	0,3874	0,25	0,32
Kontrol+	3	0,2200	0,02000	0,01155	0,1703	0,2697	0,20	0,24
Kontrol-	3	-0,0333	0,01155	0,00667	-0,0620	-0,0046	-0,04	-0,02
Total	15	0,1753	0,11667	0,03012	0,1107	0,2399	-0,04	0,32

**ANOVA**

	Sum of Squares	df	Mean Square	F	Sig.
Between Groups	0,182	4	0,046	55,602	0,000
Within Groups	0,008	10	0,001		
Total	0,191	14			

**Multiple Comparisons**

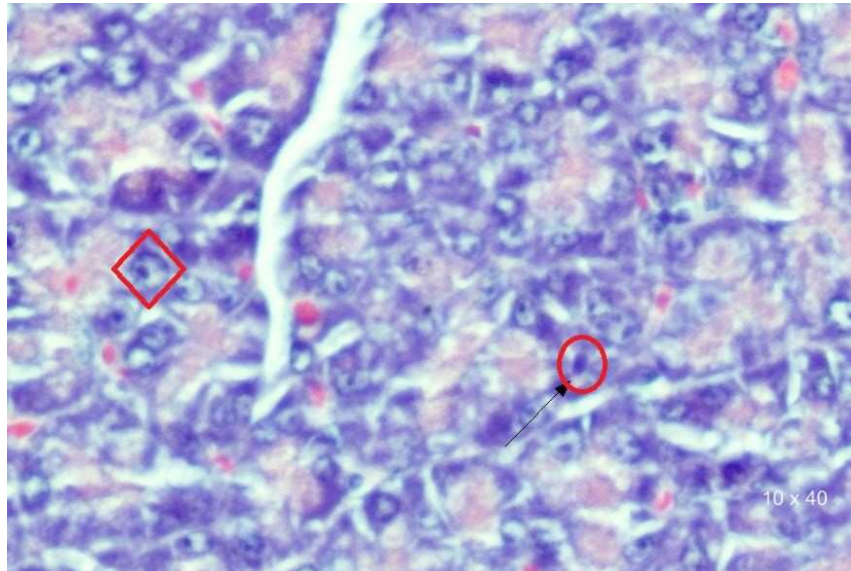
	(I) Perlakuan	(J) Perlakuan	Mean Difference (I-J)	Std. Error	Sig.	95% Confidence Interval	
						Lower Bound	Upper Bound
LSD	Zerumbone 13 – OH 1	Zerumbone 13 –OH 1,5	-0,02333	0,02338	0,342	-0,0754	0,0288
		Zerumbone 13 –OH 2	-0,10667	0,02338	0,001	-0,1588	-0,0546
		Kontrol+	-0,03333	0,02338	0,184	-0,0854	0,0188
		Kontrol-	0,22000	0,02338	0,000	0,1679	0,2721
Zerumbone13 –OH 1,5	Zerumbone13 –OH 1	Zerumbone13 –OH 2	0,02333	0,02338	0,342	-0,0288	0,0754
		Zerumbone13 –OH 2	-0,08333	0,02338	0,005	-0,1354	-0,0312
		Kontrol+	-0,01000	0,02338	0,678	-0,0621	0,0421
		Kontrol-	0,24333	0,02338	0,000	0,1912	0,2954
Zerumbone13 –OH 2	Zerumbone13 –OH 1	Zerumbone13 –OH 1,5	0,10667	0,02338	0,001	0,0546	0,1588
		Zerumbone13 –OH 1,5	0,08333	0,02338	0,005	0,0312	0,1354
		Kontrol+	0,07333	0,02338	0,011	0,0212	0,1254
		Kontrol-	0,32667	0,02338	0,000	0,2746	0,3788
Kontrol+	Zerumbone13 –OH e1	Zerumbone13 –OH 1,5	0,03333	0,02338	0,184	-0,0188	0,0854
		Zerumbone13 –OH 1,5	0,01000	0,02338	0,678	-0,0421	0,0621
		Zerumbone13 –OH 2	-0,07333	0,02338	0,011	-0,1254	-0,0212
		Kontrol-	0,25333	0,02338	0,000	0,2012	0,3054
Kontrol-	Zerumbone13 –OH 1	Zerumbone13 –OH 1,5	-0,22000	0,02338	0,000	-0,2721	-0,1679
		Zerumbone13 –OH 1,5	-0,24333	0,02338	0,000	-0,2954	-0,1912
		Zerumbone13 –OH 2	-0,32667	0,02338	0,000	-0,3788	-0,2746
		Kontrol+	-0,25333	0,02338	0,000	-0,3054	-0,2012

\* signifikan pada taraf 0,05

**Hasil**

Perlakuan	N	Subset for alpha = 0.05		
		1	2	3
Duncan <sup>a</sup> Kontrol-	3	-0,0333		
Zerumbone 13 –OH 1	3		0,1867	
Zerumbone 13 –OH 1,5	3		0,2100	
Kontrol+	3		0,2200	
Zerumbone 13 –OH 2	3			0,2933
Sig.		1.000	0,203	1.000

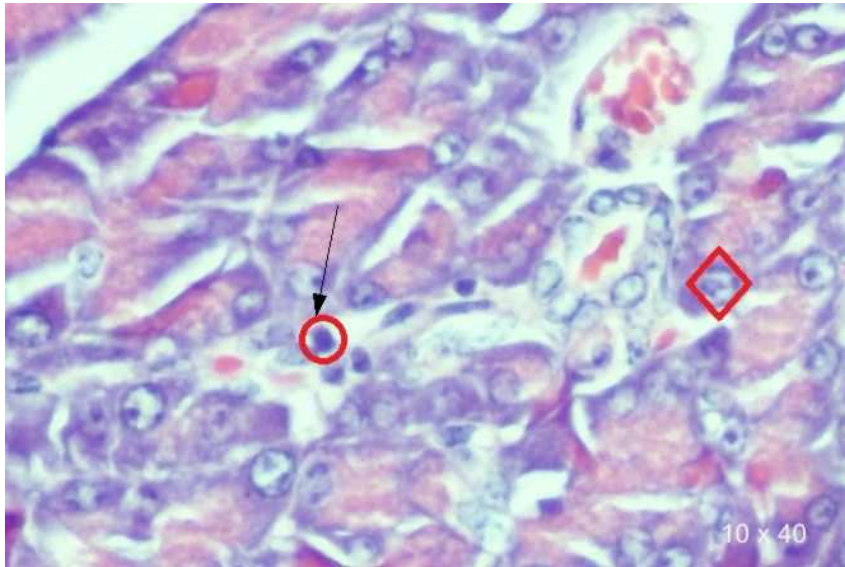
**LAMPIRAN IV**  
**HASIL HISTOLOGI**



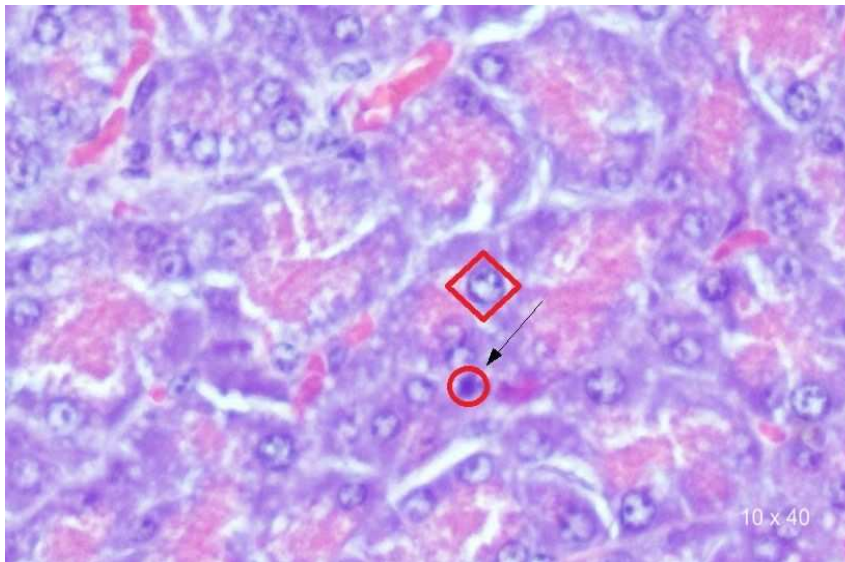
Gambar 10. Foto Histologi Pankreas (Zerumbon 13-OH 1  $\mu$ g/kg BB)



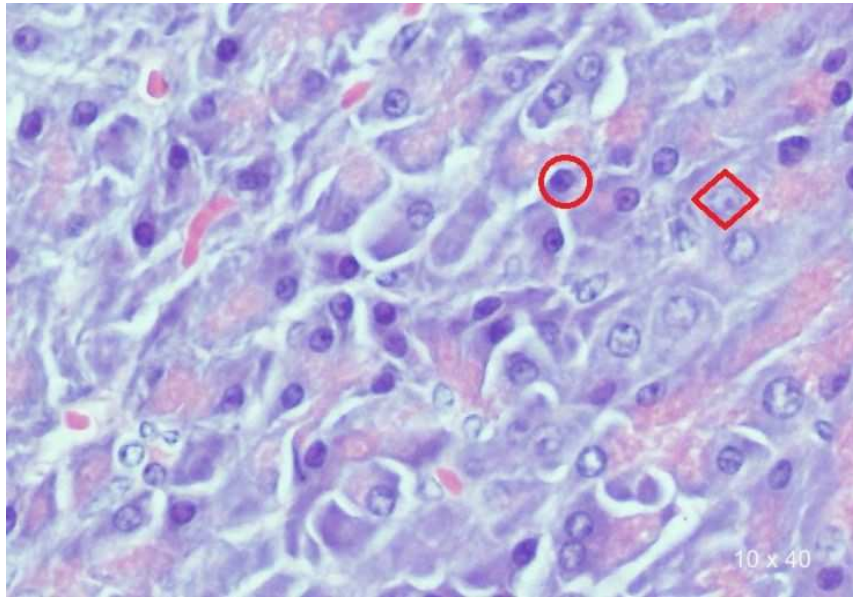
Gambar 11. Foto Histologi Pankreas (Zerumbon 13-OH 1,5  $\mu$ g/kg BB)



Gambar 12. Foto Histologi Pankreas (Zerumbon 13-OH 2  $\mu\text{g}/\text{kg}$  BB)



Gambar 13. Foto Histologi Pankreas (Gemcitabine®)



Gambar 14. Foto Histologi Pankreas (Kontrol Negatif)

Keterangan gambar :

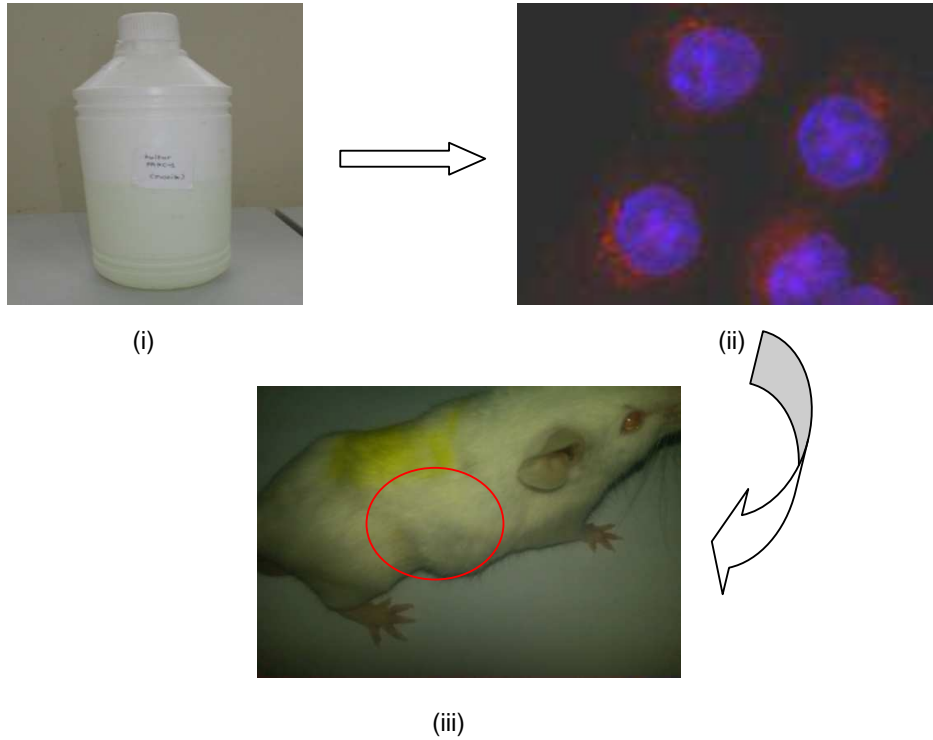


: Sel Normal

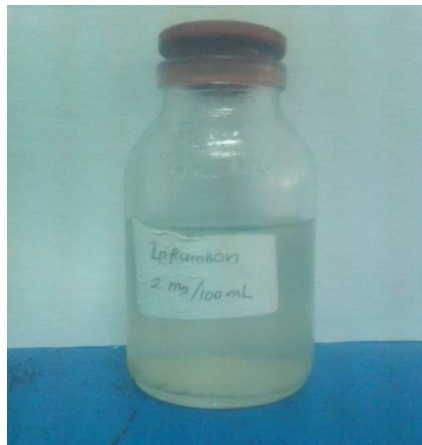


: Sel Nekrotik

**LAMPIRAN V**  
**FOTO PENELITIAN**



Gambar 15. (i) Kultur sel PANC1, (ii) Sel PANC1  
(iii) Hewan coba yang telah mengalami tumor.



Gambar 16. Zerumbon 13-OH



